



Price
£825,000

Freehold

4x  1x  1x 

**Long Mill Lane, St.
Mary's Platt, Sevenoaks,
Kent, TN15**

OVER 60?

Secure this property
for up to **59% less!**

Wards
Helping you move forwards



Main features

- Walking distance to local high street
- Indoor heated swimming pool
- Outdoor kitchen
- Fully modernised family home finished to a high specification throughout
- Close to Borough Green and Wrotham station with links to London

Accommodation

OUTSIDE

Driveway
Rear Garden

GROUND FLOOR

Kitchen/Diner: (L-shaped) 27'8 x 16'8 (8.44m x 5.08m) plus 10'8 x 8'3 (3.25m x 2.52m)

Toilet: 4'5 x 3'3 (1.35m x 0.99m)

Lounge: 22'9 x 10'9 (6.94m x 3.28m)

Office: 9'5 x 4'9 (2.87m x 1.45m)

FIRST FLOOR

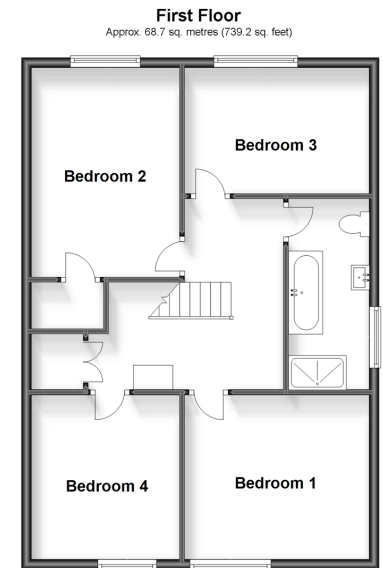
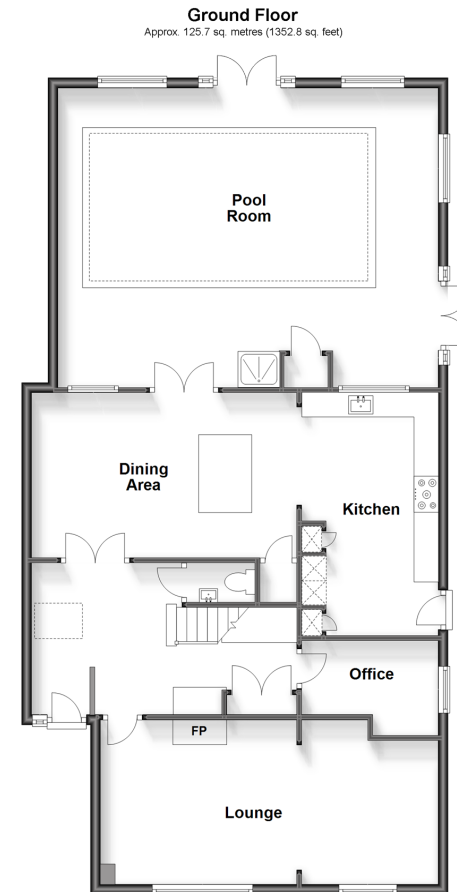
Bathroom: 12'3 x 6'5 (3.74m x 1.96m)

Bedroom 1: 12'4 x 11'6 (3.76m x 3.51m)

Bedroom 2: 14'6 x 10'1 (4.42m x 3.08m)

Bedroom 3: 12'5 x 9'1 (3.79m x 2.77m)

Bedroom 4: 11'2 x 10'3 (3.41m x 3.13m)



Call West Kingsdown - 01474 852816 ■ wardsofKent.co.uk

- Legal advice should be taken to verify fixtures/fittings, planning, alterations and/or lease details
- Appliances & services are untested, dimensions are approximate and floor plans are not to scale
- Through a Homewise Home For Life Plan people aged 60+ can secure this property for up to 59% less, by purchasing a Lifetime Lease.



14419910/20231026/DW/JS