



**Price**  
**£485,000**

**Freehold**

2x  1x  1x 

**Howells Close, West  
Kingsdown, Sevenoaks,  
Kent, TN15**

**OVER 60?**

Secure this property  
for up to **59% less!**

*Wards*  
Helping you move forwards





## Main features

- Central village location
- Close to local amenities
- Cul-De-sac
- Main bedroom with en-suite shower room
- Ideal retirement property as the accommodation is all on one level

## Accommodation

### GROUND FLOOR

#### Hallway

Kitchen: 19'5 x 13'3 (5.92m x 4.04m)

Lounge/Diner: 30'7 x 12'8 (9.33m x 3.86m)

Bathroom: 8'2 x 7'0 (2.49m x 2.14m)

Bedroom 1: 10'8 x 9'3 (3.25m x 2.82m)

En-suite Shower: 8'11 x 3'2 (2.72m x 0.97m)

Bedroom 2: 10'9 x 9'3 (3.28m x 2.82m)

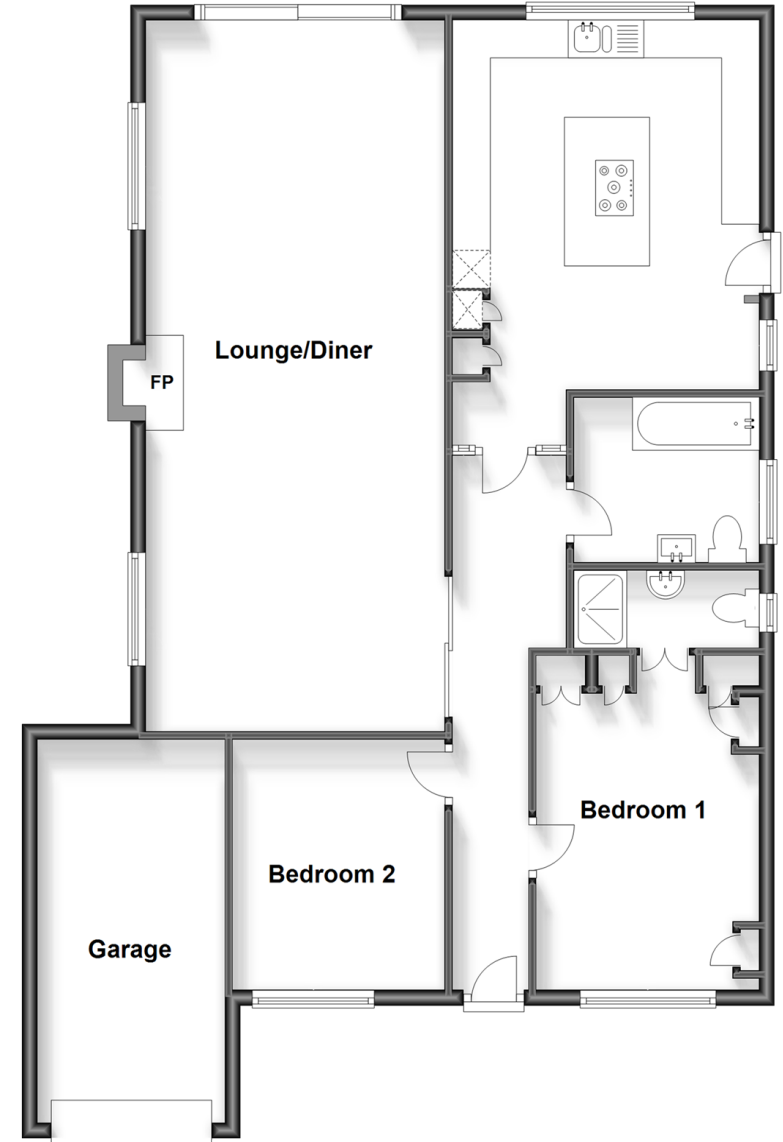
### OUTSIDE

Rear Garden

Garage

## Ground Floor

Approx. 112.8 sq. metres (1214.3 sq. feet)



**Call West Kingsdown - 01474 852816 ■ [wardsof Kent.co.uk](http://wardsof Kent.co.uk)**

- Legal advice should be taken to verify fixtures/fittings, planning, alterations and/or lease details
- Appliances & services are untested, dimensions are approximate and floor plans are not to scale
- Through a Homewise Home For Life Plan people aged 60+ can secure this property for up to 59% less, by purchasing a Lifetime Lease.



14419917/20231202/YK/JS