



**Price**

**£800,000**

**Freehold**

5x  4x  2x 

**West Street, Wrotham,  
Kent, TN15**

**OVER 60?**

Secure this property  
for up to **59% less!**

*Wards*  
Helping you move forwards





## Main features

- Village location
- South facing garden
- Large driveway
- Open plan kitchen/family room with views over the sunny private garden
- 5 large double bedrooms 2 with ensuite facilities

## Accommodation

### GROUND FLOOR

#### Hallway

Cloakroom: 4'9 x 3'9 (1.45m x 1.14m)

Study: 10'2 x 9'7 (3.10m x 2.92m)

Kitchen: 28'10 x 21'0 (8.79m x 6.41m)

Lounge: 18'3 x 13'9 (5.57m x 4.19m)

Conservatory: 14'1 x 13'1 (4.30m x 3.99m)

Garage: 18'7 x 16'4 (5.67m x 4.98m)

### FIRST FLOOR

#### Landing

Bedroom 1: 15'4 x 10'5 (4.68m x 3.18m)

Ensuite: 9'2 x 7'2 (2.80m x 2.19m)

Bedroom 2: 14'0 x 12'5 (4.27m x 3.79m)

Ensuite: 8'2 x 3'9 (2.49m x 1.14m)

Bedroom 3: 14'8 x 12'3 (4.47m x 3.74m)

Bedroom 4: 13'6 x 12'1 (4.12m x 3.69m)

Bedroom 5: 14'8 x 8'5 (4.47m x 2.57m)

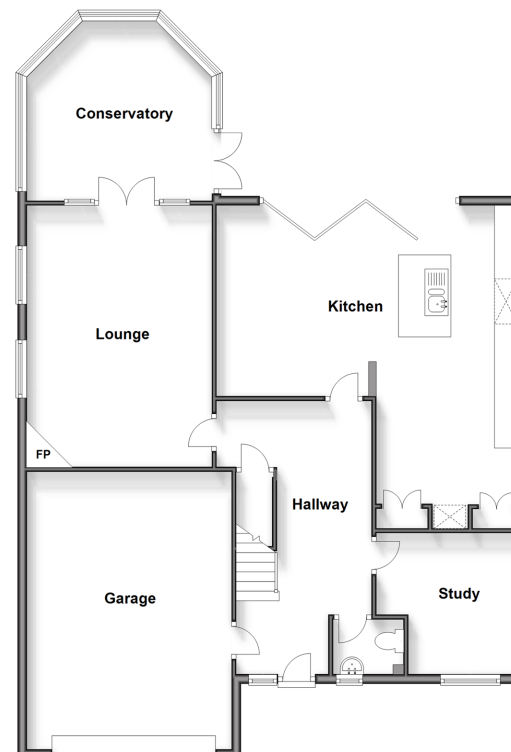
Family Bathroom: 12'3 x 9'8 (3.74m x 2.95m)

### OUTSIDE

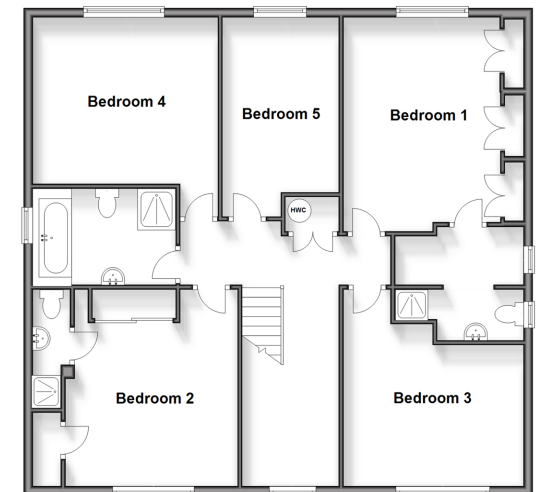
Rear Garden

Driveway

**Ground Floor**  
Approx. 127.3 sq. metres (1370.5 sq. feet)



**First Floor**  
Approx. 106.0 sq. metres (1140.8 sq. feet)



**Call West Kingsdown - 01474 852816 ■ wardsofkent.co.uk**

■ Legal advice should be taken to verify fixtures/fittings, planning, alterations and/or lease details  
■ Through a Homewise Home For Life Plan people aged 60+ can secure this property for up to 59% less, by purchasing a Lifetime Lease.

■ Appliances & services are untested, dimensions are approximate and floor plans are not to scale