



**Price**

**£135,000**

2x  1x  1x 

**East Hill Farm, East Hill  
Road, Sevenoaks, Kent,  
TN15**

*Wards*  
Helping you move forwards





## Main features

- Large spacious rear garden
- Modern kitchen
- Extended living space
- Park home situated on an over 50s residential site surrounded by stunning countryside
- Close to idyllic villages of Eynsford and Otford with guest parking situated next to the home

## Accommodation

### GROUND FLOOR

#### Hallway

Lounge: (L-shaped) 11'7 x 10'9 (3.53m x 3.28m) plus 9'3 x 4'7 (2.82m x 1.40m)

Sitting Area: 9'6 x 7'10 (2.90m x 2.39m)

Kitchen: (L-shaped) 11'8 x 6'10 (3.56m x 2.08m) plus 7'3 x 1'7 (2.21m x 0.48m)

Bedroom 1: 11'5 x 9'3 (3.48m x 2.82m)

Bedroom 2 : (L-shaped) 9'6 x 6'11 (2.90m x 2.11m) plus 2'4 x 2'1 (0.71m x 0.64m)

Bathroom: 6'10 x 5'3 (2.08m x 1.60m)

### OUTSIDE

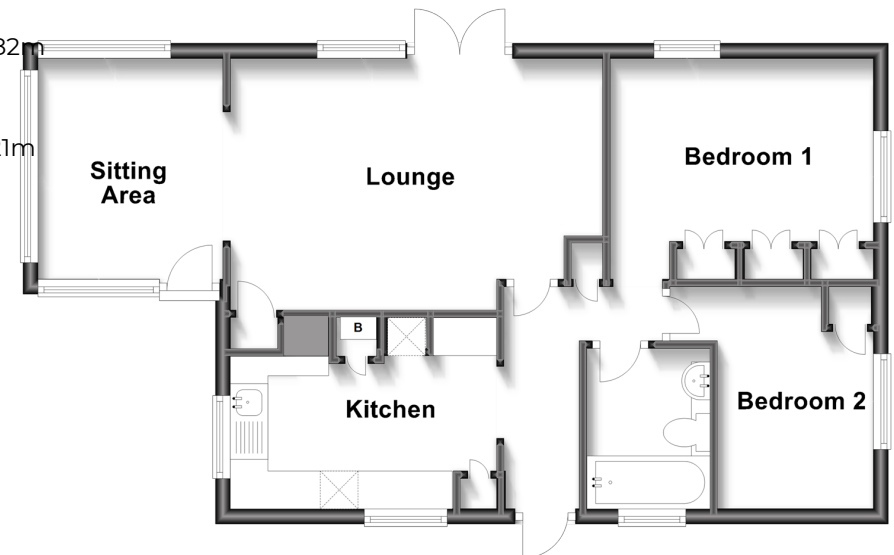
Front Garden

Rear Garden

Allocated Parking

### Ground Floor

Approx. 58.3 sq. metres (627.3 sq. feet)



Call West Kingsdown - 01474 852816 ■ [wardsofkent.co.uk](http://wardsofkent.co.uk)

■ If buying to let, the energy rating will need to be improved to at least 'E' rating before you can let the property

■ Appliances & services are untested, dimensions are approximate and floor plans are not to scale

■ Legal advice should be taken to verify fixtures/fittings, planning, alterations and/or lease details



14419965/20240424/DW/JS