



Price
£190,000

Leasehold

2x  1x  1x 

**Watersedge Court,
Wharfside Close, Erith,
Kent, DA8**

Wards
Helping you move forwards



Main features

- Third floor retirement property for the over 55's
- Balcony and uninterrupted river views
- Secure living with lift, resident's lounge and laundry room
- Communal gardens and resident's parking
- Great location close to town, railway station and supermarket

Accommodation

THIRD FLOOR

Hallway

Lounge/Diner: 21'1 x 10'1 (6.43m x 3.08m)

Kitchen: 7'7 x 7'5 (2.31m x 2.26m)

Bedroom 1: 19'3 x 9'1 (5.87m x 2.77m)

Bedroom 2: 17'2 x 9'3 (5.24m x 2.82m)

Shower Room

OUTSIDE

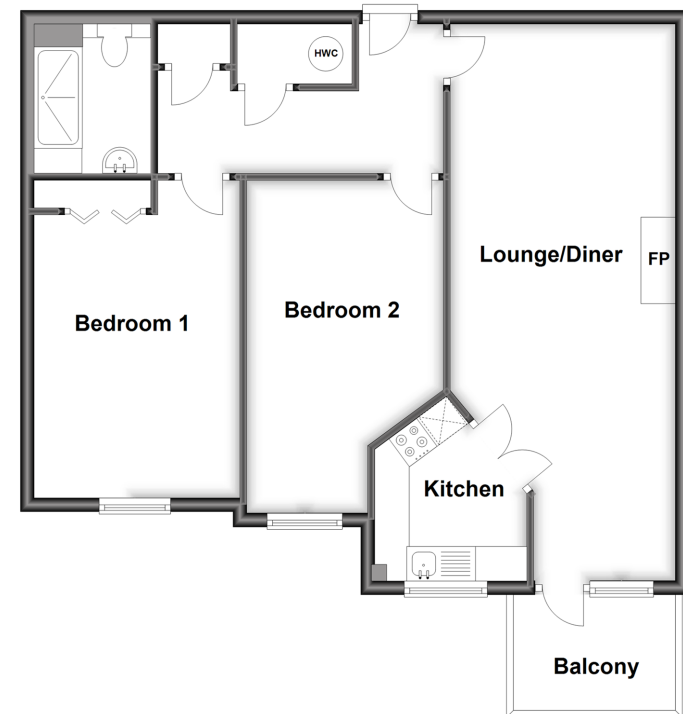
Balcony

Communal Gardens

Resident's Parking

Third Floor

Approx. 69.5 sq. metres (748.2 sq. feet)



Call Barnehurst - 01322 335525 ■ wardsofkennt.co.uk

■ Legal advice should be taken to verify fixtures/fittings, planning, alterations and/or lease details

■ Appliances & services are untested, dimensions are approximate and floor plans are not to scale



14710477/20231116/JS1/BC