



**Price**  
**£425,000**

**Freehold**

3x  1x  1x 

**Bexley Close, Dartford,  
Kent, DA1**

**OVER 60?**

Secure this property  
for up to **59% less!**

*Wards*  
Helping you move forwards





## Main features

- 3 bed semi-detached house in very peaceful cul-de-sac with downstairs W/C
- Large rear extension with bifold doors opening out to garden
- Surrounded by green areas,
- Great motorway links for A2/M25,
- Lots of living space with large bedrooms and separate living area

## Accommodation

### GROUND FLOOR

Porch  
Hallway  
Living Room: 13'1 x 10'4 (3.99m x 3.15m)  
Kitchen/Dining Area: 14'4 x 12'9 (4.37m x 3.89m)  
Cloakroom

### FIRST FLOOR

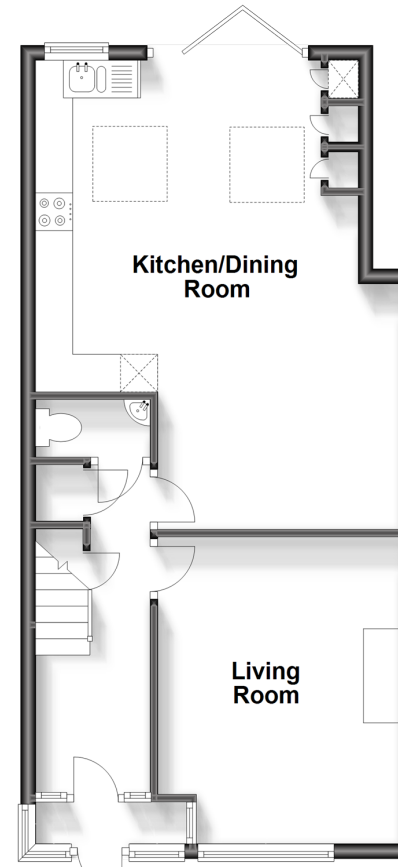
Landing  
Bedroom 1: 13'3 x 8'4 (4.04m x 2.54m)  
Bedroom 2: 12'0 x 10'1 (3.66m x 3.08m)  
Bedroom 3: 8'1 x 6'0 (2.47m x 1.83m)  
Bathroom

### OUTSIDE

Front Garden  
Rear Garden  
Driveway

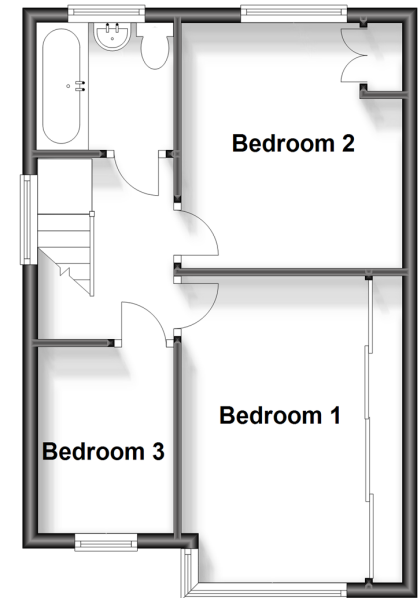
### Ground Floor

Approx. 49.5 sq. metres (532.6 sq. feet)



### First Floor

Approx. 35.2 sq. metres (378.5 sq. feet)



**Call Barnehurst - 01322 335525 ■ [wardsof Kent.co.uk](http://wardsof Kent.co.uk)**

- Legal advice should be taken to verify fixtures/fittings, planning, alterations and/or lease details
- Appliances & services are untested, dimensions are approximate and floor plans are not to scale
- Through a Homewise Home For Life Plan people aged 60+ can secure this property for up to 59% less, by purchasing a Lifetime Lease.



14710480/20231017/JH/JH