



Price
£550,000

Freehold

3x  1x  1x 

**Oldfield Road,
Bexleyheath, Kent, DA7**

Wards
Helping you move forwards



Main features

- Semi-detached house with a driveway
- Large outbuilding made into a gym with a sauna
- Open plan kitchen with a handy store room
- Plenty of living space
- Very close to shops and motorway links

Accommodation

GROUND FLOOR

Entrance Hallway
 Living Room: 13'7 x 10'7 (4.14m x 3.23m)
 Dining Area: 16'4 x 12'0 (4.98m x 3.66m)
 Kitchen: 16'6 x 10'7 (5.03m x 3.23m)
 Store Room

FIRST FLOOR

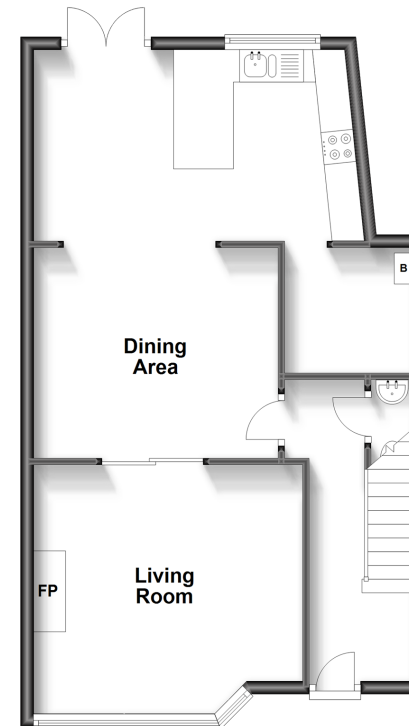
Landing
 Bedroom 1: 13'5 x 10'5 (4.09m x 3.18m)
 Bedroom 2: 12'0 x 10'11 (3.66m x 3.33m)
 Bedroom 3: 7'5 x 6'5 (2.26m x 1.96m)
 Bathroom

OUTSIDE

Driveway to Front
 Rear Garden
 Outbuilding/Gym and Sauna: 17'11 x 10'5 (5.46m x 3.18m)

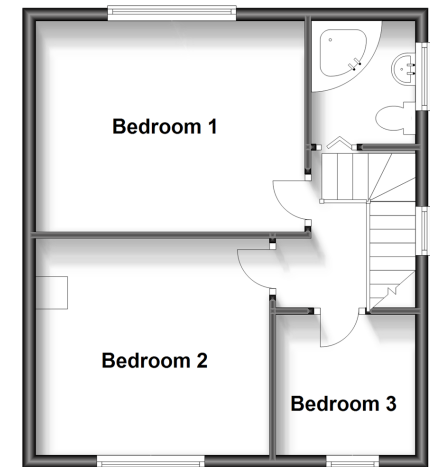
Ground Floor

Approx. 56.5 sq. metres (608.5 sq. feet)



First Floor

Approx. 39.7 sq. metres (427.3 sq. feet)



Call Barnehurst - 01322 335525 ■ wardsof Kent.co.uk

■ Legal advice should be taken to verify fixtures/fittings, planning, alterations and/or lease details

■ Appliances & services are untested, dimensions are approximate and floor plans are not to scale



14710508/20240423/AM/AM