



Price
£550,000

Freehold

3x  1x  1x 

**Bexley Road, Erith,
Kent, DA8**

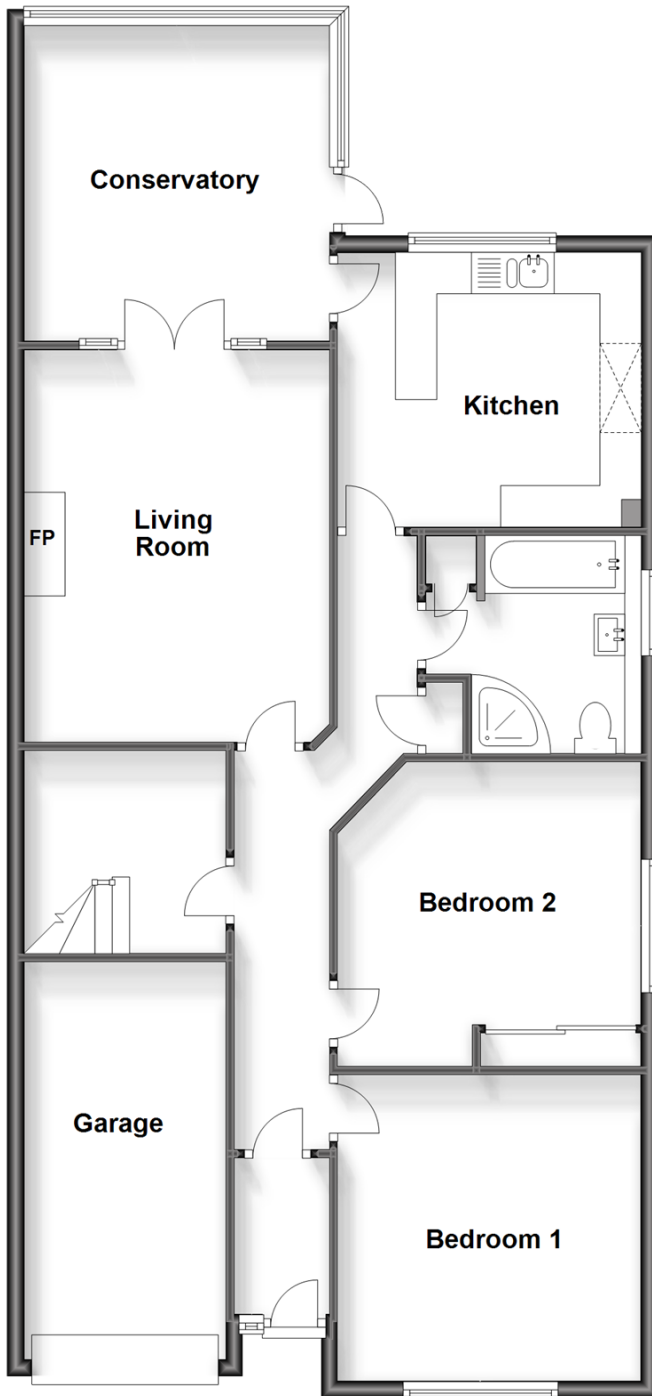
OVER 60?

Secure this property
for up to **59% less!**

Wards
Helping you move forwards

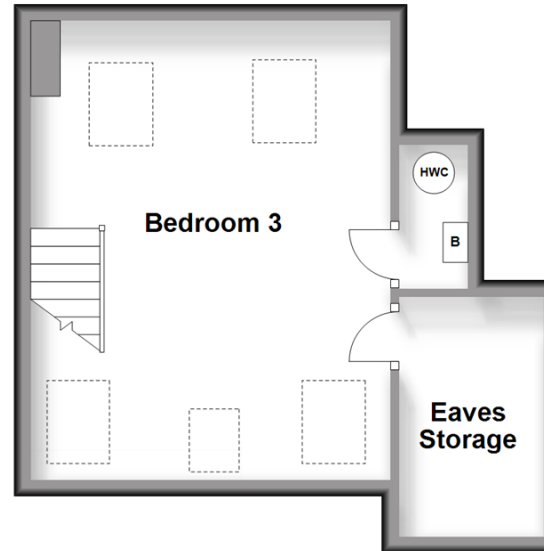
Ground Floor

Approx. 110.0 sq. metres (1183.7 sq. feet)



First Floor

Approx. 31.0 sq. metres (333.9 sq. feet)



Accommodation

GROUND FLOOR

Entrance Porch

Hallway

Living Room: 14'10 x 12'4 (4.52m x 3.76m)

Conservatory: 12'0 x 11'2 (3.66m x 3.41m)

Kitchen: 11'10 x 10'10 (3.61m x 3.30m)

Bathroom

Bedroom 1: 11'11 x 11'11 (3.63m x 3.63m)

Bedroom 2: 11'11 x 11'11 (3.63m x 3.63m)

Dressing Area

FIRST FLOOR

Bedroom 3: 17'8 x 14'1 (5.39m x 4.30m)

Eaves Storage

OUTSIDE

Driveway

Garage

Rear Garden



Main features

- Semi-detached bungalow with a large driveway
- Large open plan kitchen with a separate living area
- A very sunny conservatory perfect all year round
- Lovely rear garden with a fishpond and a BBQ hut
- 0.4 miles to Erith Railway Station



Nearest Schools

Primary Schools: Christ Church 0.5 mls, St Fidelis 0.5 mls, Belvedere 0.8 mls. Secondary Schools & Further Education: Erith Sch 0.7 mls, Trinity Sch 1.0 mls, Woodside Sch 1.8 mls, Bexley Coll 1.0 mls.



Transport Information

Train Stations: Erith 0.4 mls, Barnehurst 1.4 mls, Belvedere 1.8 mls.



Address

Bexley Road, Erith, Kent, DA8



Directions

For directions to this property please contact us.



Wards
Helping you move forwards

Call Barnehurst Branch 01322 335525 ■ wardsofkent.co.uk



■ Legal advice should be taken to verify fixtures/fittings, planning, alterations and/or lease details ■ Appliances & services are untested, dimensions are approximate and floor plans are not to scale
■ Through a Homewise Home For Life Plan people aged 60+ can secure this property for up to 59% less, by purchasing a Lifetime Lease.



14710550/20230520/JS1/JH