



OVER 60?

Secure this property
for up to **59% less!**

Price

£375,000

Freehold

3x  1x  1x 

**Claston Close, Crayford,
Kent, DA1**

Wards
Helping you move forwards



Main features

- **Modern terraced house, perfect location for St Paulinus CE & St Joseph's Catholic Primary Schools**
- **Well presented throughout, with excellent living space**
- **Downstairs cloakroom and low maintenance rear garden**
- **Ideal first time buy for young family**
- **Close to town centre, excellent road and rail links, perfect for Zone 6 travel**

Accommodation

GROUND FLOOR

Hallway
Lounge/Diner: 17'5 x 15'9 (5.31m x 4.80m)
Downstairs Cloakroom
Kitchen: 11'9 x 9'6 (3.58m x 2.90m)

FIRST FLOOR

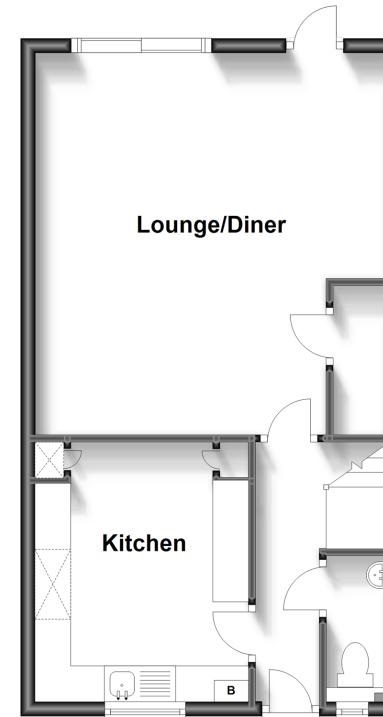
Landing
Bedroom 1: 14'9 x 9'7 (4.50m x 2.92m)
Bedroom 2: 14'5 x 8'8 (4.40m x 2.64m)
Bedroom 3: 8'4 x 6'11 (2.54m x 2.11m)
Bathroom

OUTSIDE

Front Garden
Rear Garden

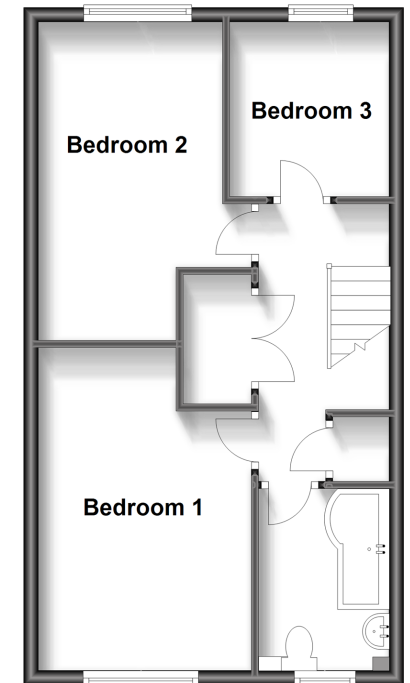
Ground Floor

Approx. 44.4 sq. metres (478.4 sq. feet)



First Floor

Approx. 44.4 sq. metres (478.4 sq. feet)



Call Barnehurst - 01322 335525 ■ wardsof Kent.co.uk

- Legal advice should be taken to verify fixtures/fittings, planning, alterations and/or lease details
- Through a Homewise Home For Life Plan people aged 60+ can secure this property for up to 59% less, by purchasing a Lifetime Lease.

- Appliances & services are untested, dimensions are approximate and floor plans are not to scale



14710589/20231004/CS/BC