



Price
£485,000

Freehold

3x  2x  1x 

**Newham Way, Slade
Green, Kent, DA8**

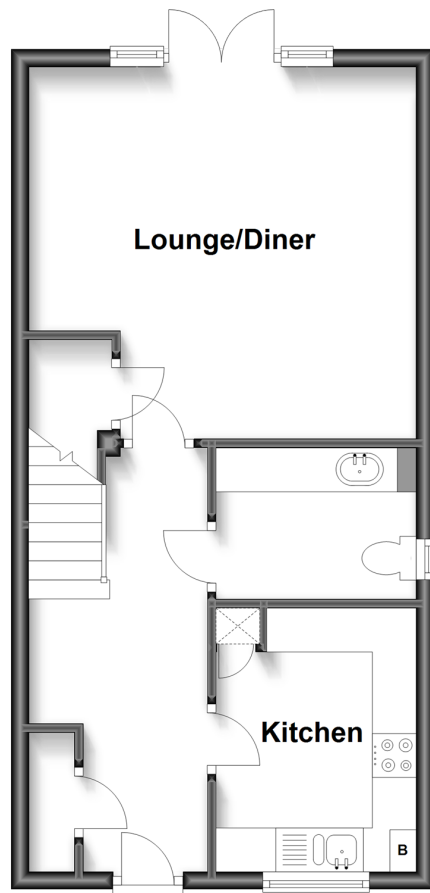
OVER 60?

Secure this property
for up to **59% less!**

Wards
Helping you move forwards

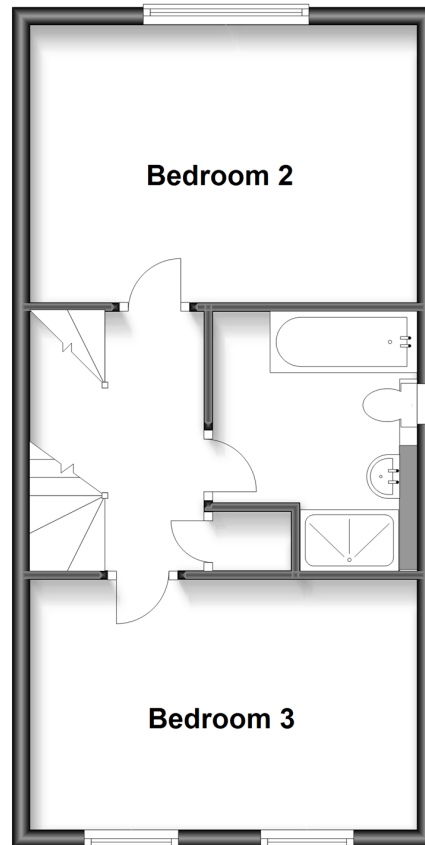
Ground Floor

Approx. 40.6 sq. metres (437.2 sq. feet)



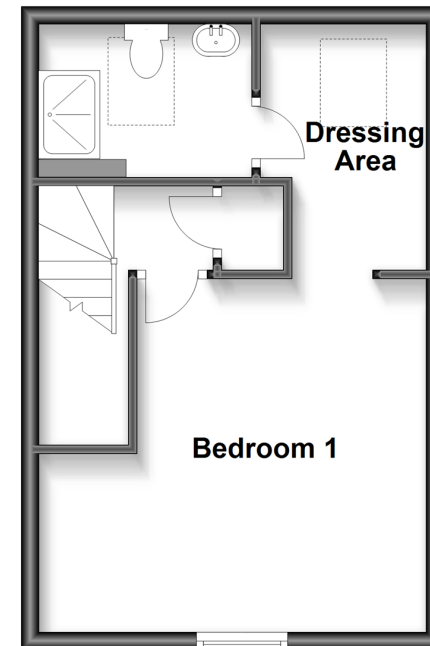
First Floor

Approx. 40.6 sq. metres (437.2 sq. feet)



Second Floor

Approx. 30.7 sq. metres (330.6 sq. feet)



Accommodation

GROUND FLOOR

Entrance Hallway

Lounge/Diner: 14'7 x 13'0 (4.45m x 3.97m)

Kitchen: 9'5 x 7'2 (2.87m x 2.19m)

Downstairs Cloakroom

FIRST FLOOR

Landing

Bedroom 2: 14'7 x 9'9 (4.45m x 2.97m)

Bedroom 3: 14'7 x 9'2 (4.45m x 2.80m)

Bathroom

SECOND FLOOR

Landing

Bedroom 1: 14'8 x 13'0 (4.47m x 3.97m)

Dressing Area

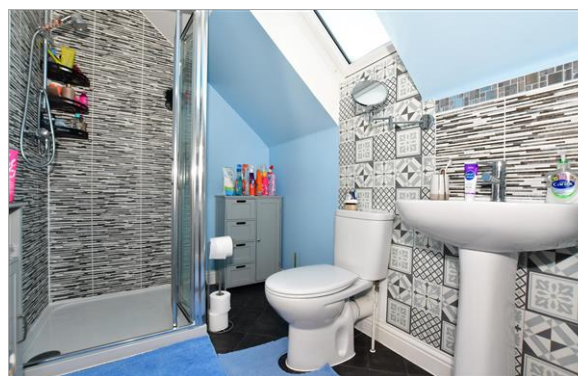
En-Suite Shower Room

OUTSIDE

Driveway

Front Garden

Rear Garden



Main features

- Modern end of terrace town house in popular residential development
- Excellent condition throughout and brilliant sized rooms
- Impressive bedroom 1 with dressing area and en-suite shower
- Solar panels and Hive heating system
- Short walk to Slade Green Railway Station



Nearest Schools

Primary Schools: Northend 0.2 miles, Slade Green 0.3 miles, Christ Church 0.6 miles. Secondary Schools & Further Education: Erith Sch 0.8 miles, Trinity Sch 1.3 miles, Oakwood Sch 1.5 miles, Bexley Coll 1.2 miles.



Transport Information

Train Stations: Slade Green 0.4 miles, Erith 0.6 miles, Barnehurst 1.2 miles



Address

Newham Way, Slade Green, Kent, DA8



Directions

For directions to this property please contact us.



Wards
Helping you move forwards

Call Barnehurst Branch 01322 335525 ■ wardsofkent.co.uk



- Legal advice should be taken to verify fixtures/fittings, planning, alterations and/or lease details
- Appliances & services are untested, dimensions are approximate and floor plans are not to scale
- Through a Homewise Home For Life Plan people aged 60+ can secure this property for up to 59% less, by purchasing a Lifetime Lease.



14710603/20230620/JS1/BC