



OVER 60?

Secure this property
for up to **59% less!**

Price

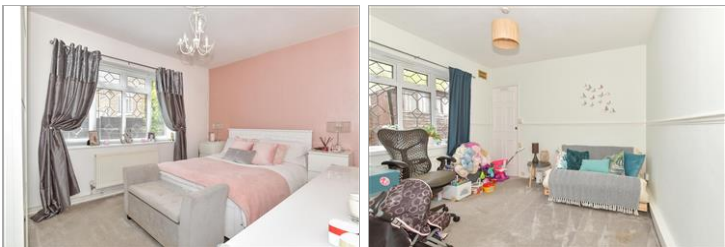
£325,000

Leasehold

2x  1x  1x 

**Hayward Close,
Dartford, Kent, DA1**

Wards
Helping you move forwards



Main features

- Ground floor maisonette, in quiet cul de sac location
- Large rear garden and gardens to front and side
- 2 double bedrooms & utility room
- Situated on border of Bexley with Hall Place on your doorstep
- Walking distance of station and Crayford's amenities

Accommodation

GROUND FLOOR

Entrance Porch

Entrance Hallway

Lounge/Diner: 17'9 x 10'3 (5.41m x 3.13m)

Bedroom 1: 13'4 x 10'0 (4.07m x 3.05m)

Bedroom 2: 13'6 at widest point x 10'5 (4.12m x 3.18m)

Bathroom

Kitchen: 11'4 x 8'3 (3.46m x 2.52m)

Lobby

Utility Room: 9'2 x 5'0 (2.80m x 1.53m)

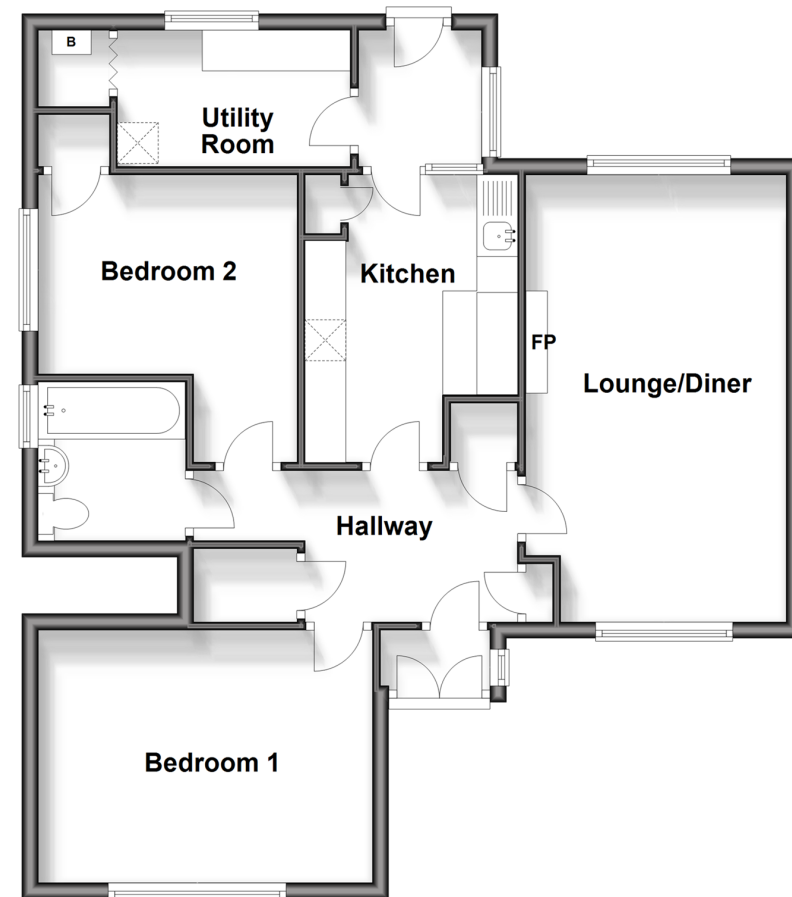
OUTSIDE

Garden to Front

Garden to Rear

Ground Floor

Approx. 71.8 sq. metres (773.3 sq. feet)



Call Barnehurst - 01322 335525 ■ wardsof Kent.co.uk

- Legal advice should be taken to verify fixtures/fittings, planning, alterations and/or lease details
- Appliances & services are untested, dimensions are approximate and floor plans are not to scale
- Through a Homewise Home For Life Plan people aged 60+ can secure this property for up to 59% less, by purchasing a Lifetime Lease.

