



OVER 60?

Secure this property
for up to **59% less!**

Price

£215,000

Leasehold

1x  1x  1x 

**Tanners Close, Dartford,
Kent, DA1**

Wards
Helping you move forwards



Main features

- First floor purpose built flat
- Recently fitted kitchen
- Well presented throughout
- Allocated parking space which can be seen from the lounge which has a Juliet balcony
- Tucked away in a cul-de-sac with lots of green open spaces nearby.

Accommodation

FIRST FLOOR

Entrance Hall

Bathroom

Bedroom: 13'0 x 10'2 (3.97m x 3.10m)

Lounge/Diner: 15'4 x 11'7 (4.68m x 3.53m)

Kitchen: 9'4 x 6'0 (2.85m x 1.83m)

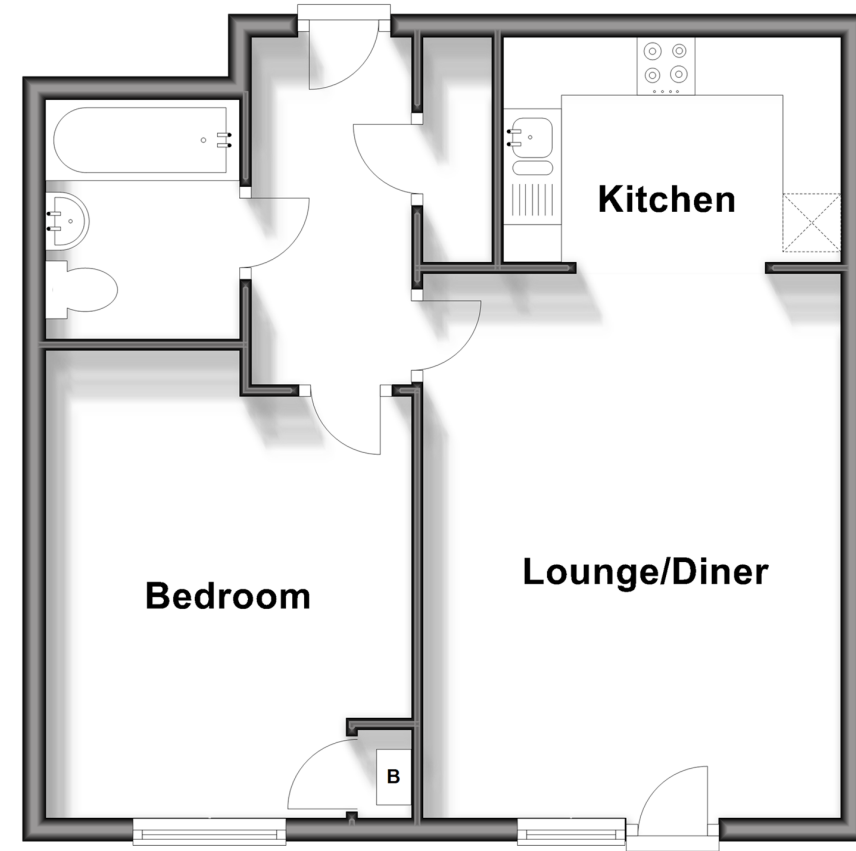
OUTSIDE

Allocated Parking Space

Communal Garden

First Floor

Approx. 45.3 sq. metres (487.6 sq. feet)



Call Barnehurst - 01322 335525 ■ wardsofkennt.co.uk

- Legal advice should be taken to verify fixtures/fittings, planning, alterations and/or lease details
- Appliances & services are untested, dimensions are approximate and floor plans are not to scale
- Through a Homewise Home For Life Plan people aged 60+ can secure this property for up to 59% less, by purchasing a Lifetime Lease.



14710730/20240418/JS1/GL