



OVER 60?

Secure this property
for up to **59% less!**

Price
£425,000

Freehold

3x  1x  2x 

**Mayplace Road West,
Bexleyheath, Kent, DA7**

Wards
Helping you move forwards



Main features

- Detached family home with a multi car driveway
- Prime location within walking distance of the Broadway
- Plenty of high rated schools close by
- Separate kitchen with an extended dining area great for entertaining
- Offered with no onward chain

Accommodation

GROUND FLOOR

Entrance Porch

Living Room: 17'0 x 14'0 (5.19m x 4.27m)

Kitchen: 17'0 x 12'0 (5.19m x 3.66m)

Dining Area: 13'9 x 8'4 (4.19m x 2.54m)

FIRST FLOOR

Landing

Bedroom 1: 11'0 x 11'0 (3.36m x 3.36m)

Bedroom 2: 12'0 x 10'0 (3.66m x 3.05m)

Bedroom 3 : 7'0 x 5'0 (2.14m x 1.53m)

Bathroom

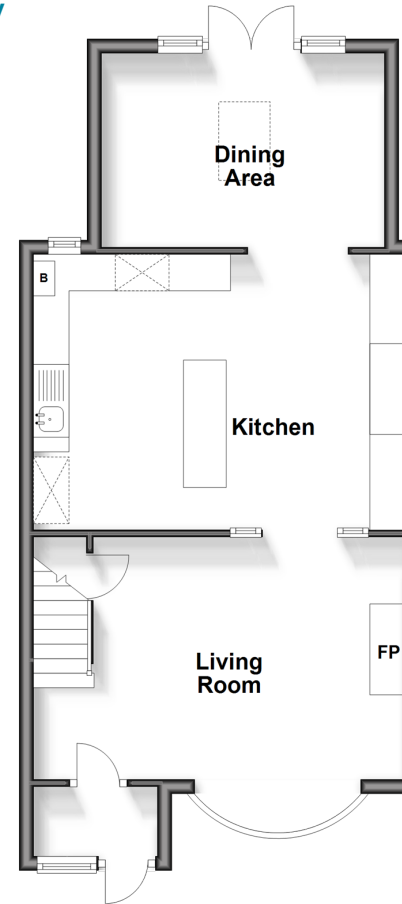
OUTSIDE

Rear Garden

Rear Driveway

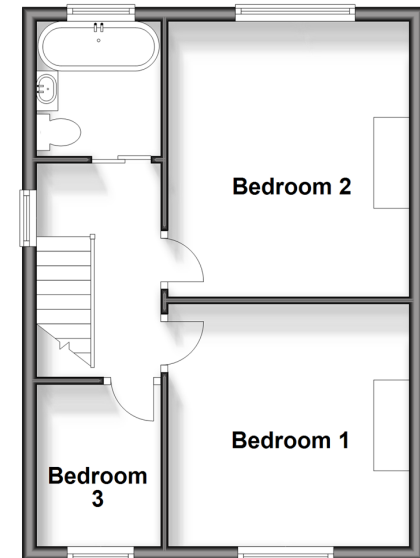
Ground Floor

Approx. 51.0 sq. metres (549.1 sq. feet)



First Floor

Approx. 37.8 sq. metres (406.3 sq. feet)



Call Barnehurst - 01322 335525 ■ wardsofkent.co.uk

- Legal advice should be taken to verify fixtures/fittings, planning, alterations and/or lease details
- Appliances & services are untested, dimensions are approximate and floor plans are not to scale
- Through a Homewise Home For Life Plan people aged 60+ can secure this property for up to 59% less, by purchasing a Lifetime Lease.



14710742/20240312/JS1/JH