



OVER 60?

Secure this property
for up to **59% less!**

Price

£340,000

Leasehold

2x  2x  1x 

**Shilling Court, Sterling
Road, Bexleyheath,
Kent, DA7**

Wards
Helping you move forwards



Main features

- First floor purpose built flat serviced by a lift
- Utility cupboard for a washer/dryer
- Allocated and visitors parking
- Set in well kept communal gardens and within walking distance of the Broadway
- Spacious throughout and with its own balcony

Accommodation

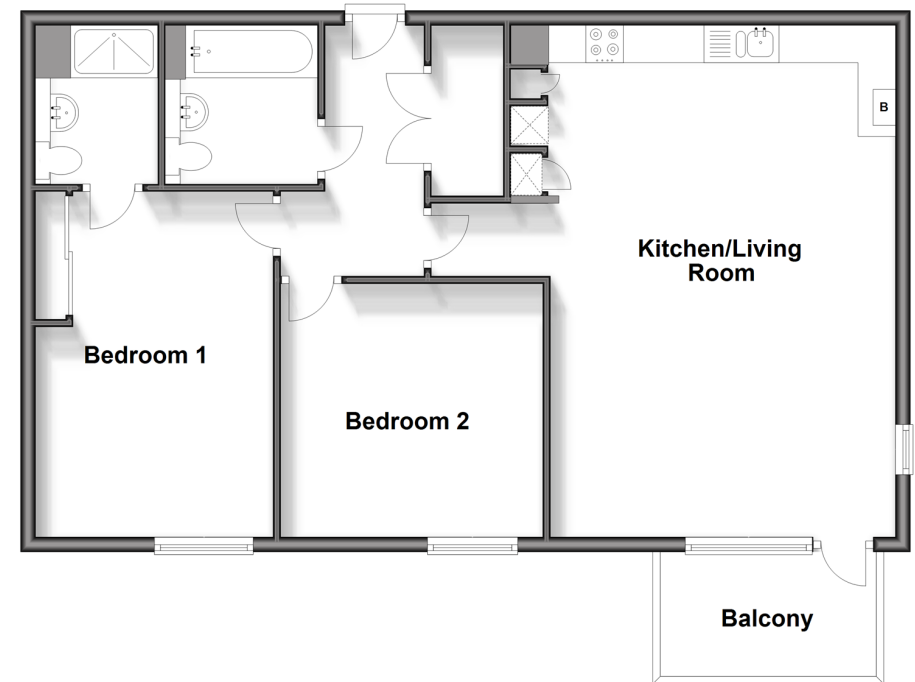
FIRST FLOOR

Entrance Hallway
 Kitchen/Living Room: 22'3 x 15'0 (6.79m x 4.58m)
 Balcony
 Bedroom 2: 11'4 x 10'9 (3.46m x 3.28m)
 Bedroom 1: 14'7 x 10'3 (4.45m x 3.13m)
 En-suite Shower Room
 Bathroom

OUTSIDE

Communal Garden
 Allocated Parking

First Floor
 Approx. 78.4 sq. metres (844.1 sq. feet)



Call Barnehurst - 01322 335525 ■ wardsof Kent.co.uk

■ Legal advice should be taken to verify fixtures/fittings, planning, alterations and/or lease details
 ■ Through a Homewise Home For Life Plan people aged 60+ can secure this property for up to 59% less, by purchasing a Lifetime Lease.

■ Appliances & services are untested, dimensions are approximate and floor plans are not to scale