



OVER 60?

Secure this property
for up to **59% less!**

Price

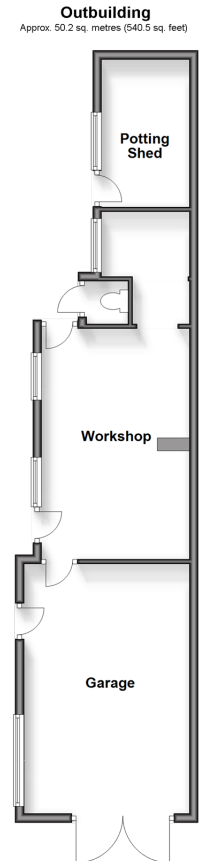
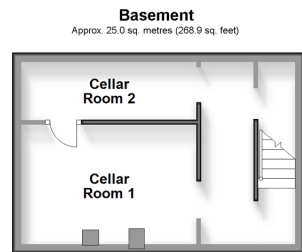
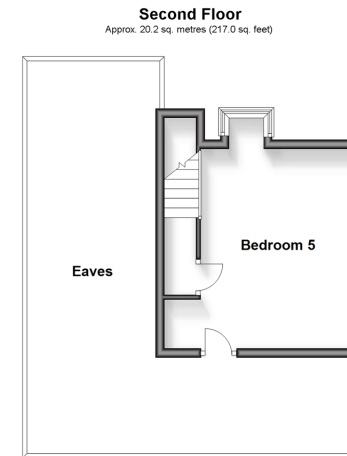
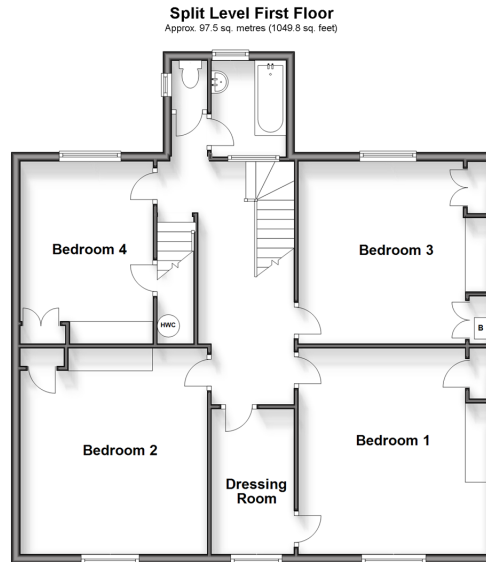
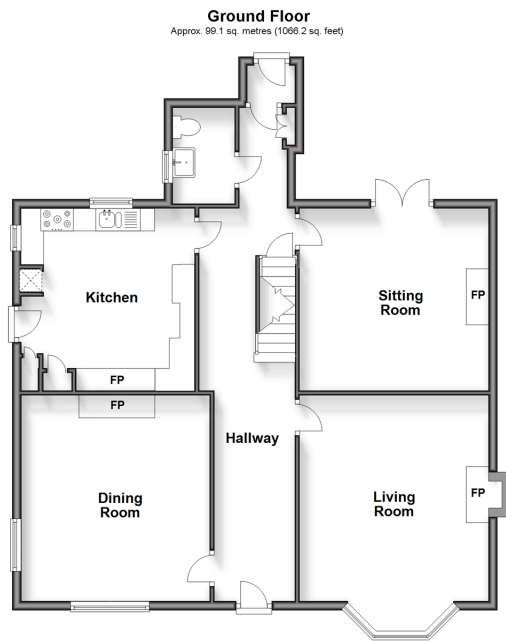
£825,000

Freehold

5x  1x  3x 

**Bantry House, Picardy
Road, Belvedere, Kent,
DA17**

Wards
Helping you move forwards



Accommodation

GROUND FLOOR

Entrance Hallway
Dining Room: 14'8 x 13'8 (4.47m x 4.17m)
Living Room: 17'8 x 13'8 (5.39m x 4.17m)
Sitting Room: 13'7 x 13'3 (4.14m x 4.04m)
Cloakroom
Kitchen: 12'9 x 12'9 (3.89m x 3.89m)

BASEMENT

Cellar Rooms 1 and 2

FIRST FLOOR

Landing
Bedroom 1: 15'0 x 13'8 (4.58m x 4.17m)
Dressing Room: 10'6 x 5'8 (3.20m x 1.73m)
Bedroom 2: 14'5 x 11'4 (4.40m x 3.46m)
Bedroom 3: 13'8 x 13'6 (4.17m x 4.12m)
Bedroom 4: 13'3 x 12'7 (4.04m x 3.84m)
Bathroom
Separate Toilet

SECOND FLOOR

Bedroom 5: 11'9 x 10'3 (3.58m x 3.13m)
Eaves

OUTSIDE

Large Driveway to Front
Rear Garden
Detached Garage
Workshop
Potting Shed



Main features

- An imposing detached period residence
- Refurbishment and updating required
- Offered for sale with no chain
- Situated on a large corner plot with potential access from the side road, Bunkers Hill
- Outbuildings which include a detached garage, workshop and a potting shed with potential for other uses



Nearest Schools

Primary Schools: Lessness Heath Primary 0.1 mls, St Augustine of Canterbury 0.3 mls, Belvedere Junior 0.5 mls. Secondary Schools & Further Education: Woodside Sch 0.2 mls, Trinity Sch 0.4 mls, The Business Academy 0.9 mls, Bexley Coll 0.6 mls.



Transport Information

Train Stations: Belvedere 0.3 miles, Erith 1.1 miles, Abbey Wood 1.2 miles



Address

Bantry House, Picardy Road, Belvedere, Kent, DA17



Directions

For directions to this property please contact us.



Call Barnehurst Branch 01322 335525 ■ wardsofkent.co.uk



- If buying to let, the energy rating will need to be improved to at least 'E' rating before you can let the property
- Appliances & services are untested, dimensions are approximate and floor plans are not to scale

- Legal advice should be taken to verify fixtures/fittings, planning, alterations and/or lease details
- Through a Homewise Home For Life Plan people aged 60+ can secure this property for up to 59% less, by purchasing a Lifetime Lease.



14710803/20240504/JS1/GL