



OVER 60?

Secure this property
for up to **59% less!**

Price

£475,000

Freehold

3x  2x  1x 

**Tenby Road, Welling,
Kent, DA16**

Wards
Helping you move forwards



Main features

- **Fantastic extended 3 bed semi-detached house on the Welling/Bexleyheath border**
- **Sold with no forward chain**
- **Modern kitchen and dining area**
- **Parking for 1 car**
- **Located close to local shops and schools as well as Bexleyheath Train station**

Accommodation

GROUND FLOOR

Entrance Hallway

Lounge: 13'6 x 12'6 (4.12m x 3.81m)

Kitchen/Breakfast Room: 13'4 x 7'0 (4.07m x 2.14m)

Dining Room: 11'8 x 10'7 (3.56m x 3.23m)

FIRST FLOOR

Landing

Bedroom 1: 12'2 x 12'2 (3.71m x 3.71m)

Bedroom 2 with en-suite shower: 10'6 x 8'2 (3.20m x 2.49m)

Bedroom 3: 8'8 x 7'3 (2.64m x 2.21m)

Bathroom

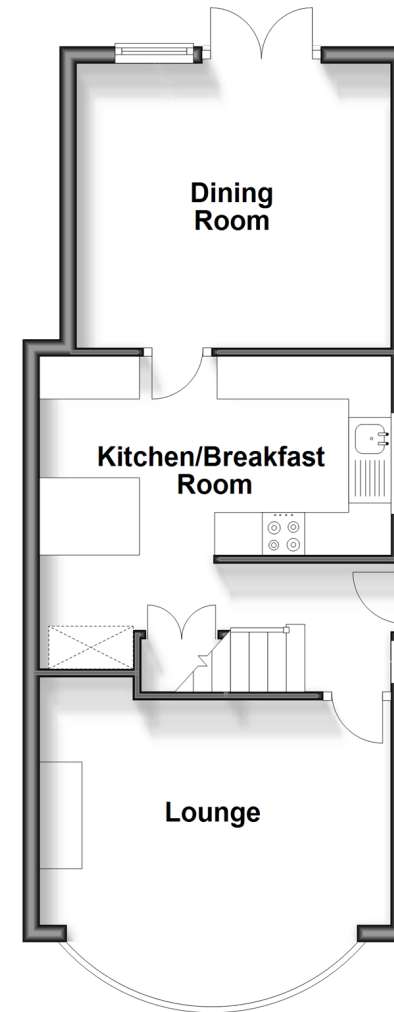
OUTSIDE

Rear Garden

Driveway

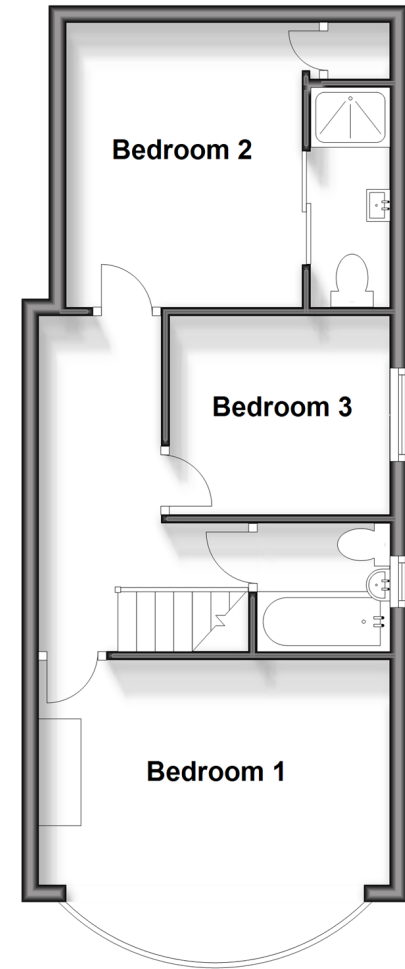
Ground Floor

Approx. 40.9 sq. metres (440.5 sq. feet)



First Floor

Approx. 41.3 sq. metres (444.5 sq. feet)



Call Welling - 020 8301 6679 ■ wardsofkent.co.uk

- Legal advice should be taken to verify fixtures/fittings, planning, alterations and/or lease details
- Appliances & services are untested, dimensions are approximate and floor plans are not to scale
- Through a Homewise Home For Life Plan people aged 60+ can secure this property for up to 59% less, by purchasing a Lifetime Lease.



15007641/20240511/NB/LK