



Price
£735,000

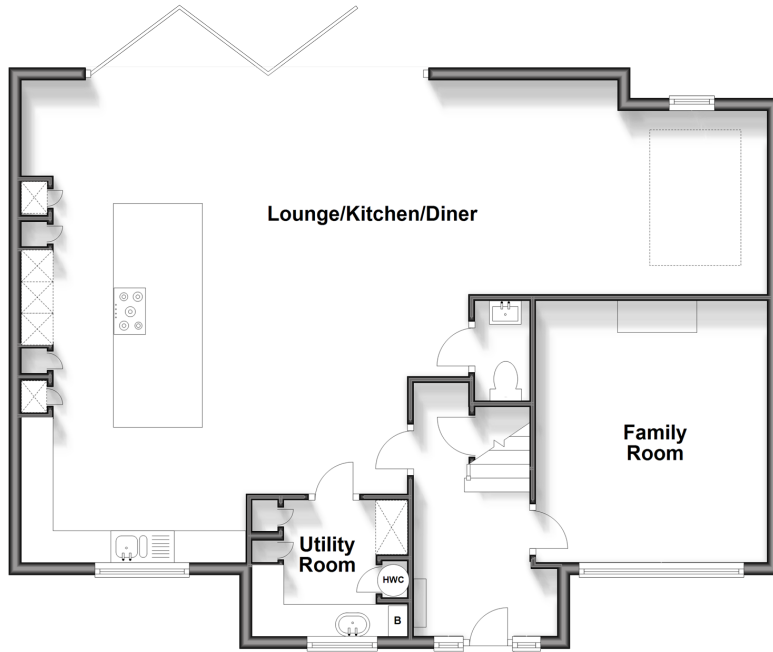
Freehold

4x  2x  1x 

**Leigh Place, Welling,
Kent, DA16**

Wards
Helping you move forwards

Ground Floor
Approx. 93.7 sq. metres (1008.9 sq. feet)



First Floor
Approx. 83.9 sq. metres (903.4 sq. feet)



Outbuilding
Approx. 19.4 sq. metres (208.4 sq. feet)



Accommodation

GROUND FLOOR

Hallway
Utility Room: 7'3 x 5'9 (2.21m x 1.75m)
Kitchen/Dining Area/Lounge: 23'9 at widest point x 21'10 at widest point (7.24m x 6.66m) plus 11'2 at widest point x 14'7 at widest point (3.41m x 4.45m)
Family Room: 11'10 x 11'10 (3.61m x 3.61m)

FIRST FLOOR

Landing
Bedroom 1: 13'11 x 11'6 (4.24m x 3.51m)
Dressing Room: 11'1 x 7'1 (3.38m x 2.16m)
En-Suite Shower Room
Bedroom 4: 11'0 x 10'11 (3.36m x 3.33m)

Bathroom

Bedroom 3/ Office: 11'11 x 11'7 (3.63m x 3.53m)
Bedroom 2: 13'2 x 12'0 (4.02m x 3.66m)

OUTSIDE

Front Garden
Rear Garden

OUTBUILDING

Room 1



Main features

- Stunning extended family home in a cul-de-sac
- Open plan kitchen/dining area/lounge
- Separate family room & utility room
- Impressive bedroom 1 with dressing room and en-suite shower room
- Landscaped gardens with additional storage



Nearest Schools

Primary: St Stephen's Catholic 0.2 miles, East Wickham Junior 0.2 miles, Hook Lane 0.4 miles

Secondary: Welling 0.2 miles, Bexley Grammar 0.7 miles, St Pauls Academy 0.9 miles



Transport Information

Train Stations: Welling 0.2 miles, Bexleyheath 1.1 miles, Falconwood 1.3 miles

DLR.: King George V 3.0 miles, Gallions Reach 3.3 miles, Cyprus 3.4 miles



Address

Leigh Place, Welling, Kent, DA16



Directions

For directions to this property please contact us.



Wards
Helping you move forwards

Call Welling Branch 020 8301 6679 ■ wardsofkent.co.uk



■ Legal advice should be taken to verify fixtures/fittings, planning, alterations and/or lease details ■ Appliances & services are untested, dimensions are approximate and floor plans are not to scale



15007687/20240304/JJ/LK