



**OVER 60?**

Secure this property  
for up to **59% less!**

**Guide Price**

**£450,000**

**Freehold**

3x  1x  2x 

**Gipsy Road, Welling,  
Kent, DA16**

*Wards*  
Helping you move forwards





## Main features

- Enjoy lots of parking with a large driveway and garage to the side
- Close to the local shops
- Handy for restaurants and amenities
- Close to Bexleyheath station
- Property is finished to a good standard and recently refurbished throughout

## Accommodation

### GROUND FLOOR

Hallway

Living Room: 10'6 x 10'6 (3.20m x 3.20m)

Dining Area: 13'5 x 11'1 (4.09m x 3.38m)

Kitchen: 11'8 x 8'1 (3.56m x 2.47m)

### FIRST FLOOR

Landing

Bedroom 3: 7'2 x 5'0 (2.19m x 1.53m)

Bedroom 2

Bedroom 1: 17'1 x 10'5 (5.21m x 3.18m)

Bathroom

### OUTSIDE

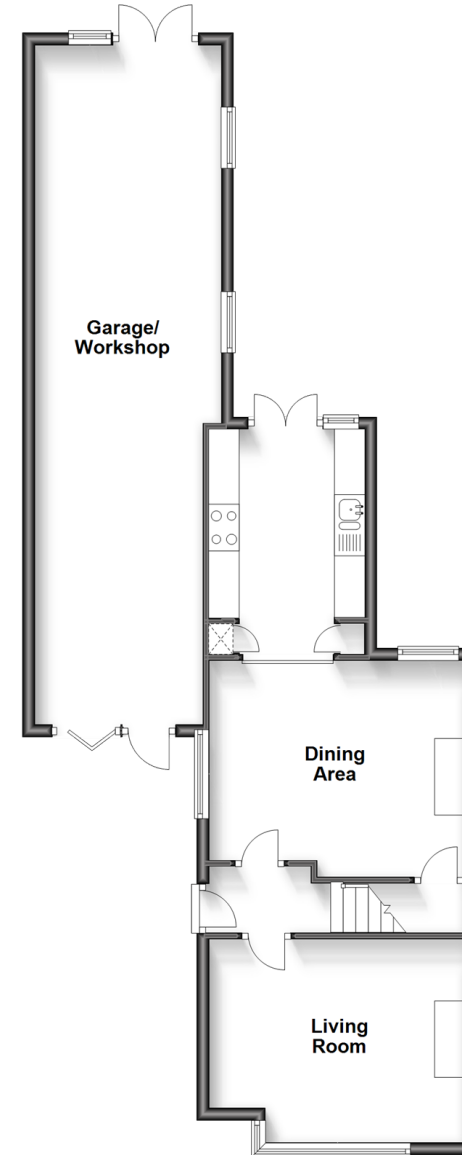
Driveway

Garage/Workshop

Rear Garden

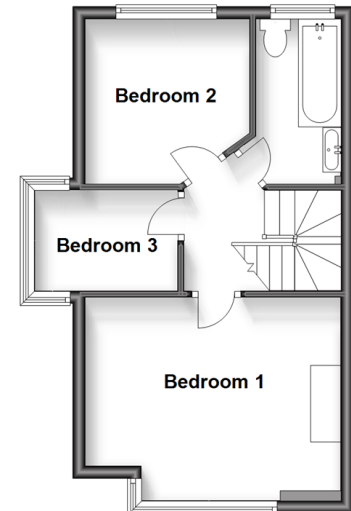
### Ground Floor

Approx. 75.3 sq. metres (810.6 sq. feet)



### First Floor

Approx. 34.3 sq. metres (369.5 sq. feet)



**Call Welling - 020 8301 6679 ■ [wardsofkent.co.uk](http://wardsofkent.co.uk)**

- Legal advice should be taken to verify fixtures/fittings, planning, alterations and/or lease details
- Appliances & services are untested, dimensions are approximate and floor plans are not to scale
- Through a Homewise Home For Life Plan people aged 60+ can secure this property for up to 59% less, by purchasing a Lifetime Lease.



15007928/20230519/AK/AK