



Price
£520,000

Freehold

4x  1x  1x 

**Raymere Gardens,
London, SE18**

Wards
Helping you move forwards



Main features

- Large driveway big enough to fit two cars
- Located on a popular road in the heart of Plumstead
- Great family home
- Situated only a short walk away to local shops and train station
- Handy downstairs toilet

Accommodation

SPLIT LEVEL GROUND FLOOR

Hallway
 Separate Toilet
 Lounge: 12'0 x 12'0 (3.66m x 3.66m)
 Dining Area: 10'2 x 9'9 (3.10m x 2.97m)
 Kitchen/ Breakfast Area: 24'2 x 17'6 (7.37m x 5.34m)
 Lean - To
 Playroom(Formerly Garage): 13'3 x 8'7 (4.04m x 2.62m)
 Storage

OUTSIDE

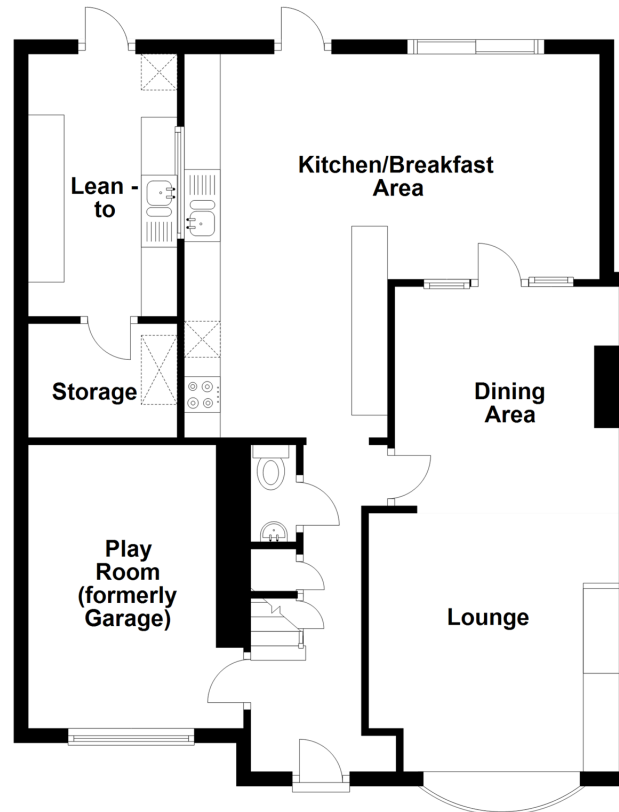
Driveway
 Rear Garden

FIRST FLOOR

Landing
 Bathroom: 6'0 x 6'0 (1.83m x 1.83m)
 Bedroom 1: 12'0 x 9'3 (3.66m x 2.82m)
 Bedroom 2: 10'1 x 8'3 (3.08m x 2.52m)
 Bedroom 3: 7'9 x 6'5 (2.36m x 1.96m)

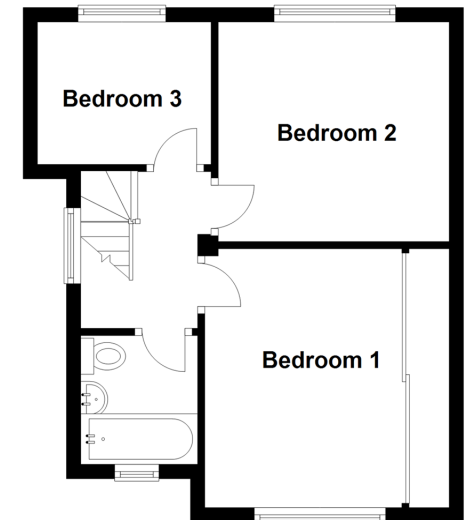
Split Level Ground Floor

Approx. 79.6 sq. metres (856.4 sq. feet)



First Floor

Approx. 34.7 sq. metres (373.6 sq. feet)



Call Welling - 020 8301 6679 ■ wardsofkent.co.uk

■ Legal advice should be taken to verify fixtures/fittings, planning, alterations and/or lease details

■ Appliances & services are untested, dimensions are approximate and floor plans are not to scale



15008046/20240112/LM/LK