



Price
£800,000

Freehold

6x  2x  2x 

**Longlands Road, Sidcup,
Kent, DA15**

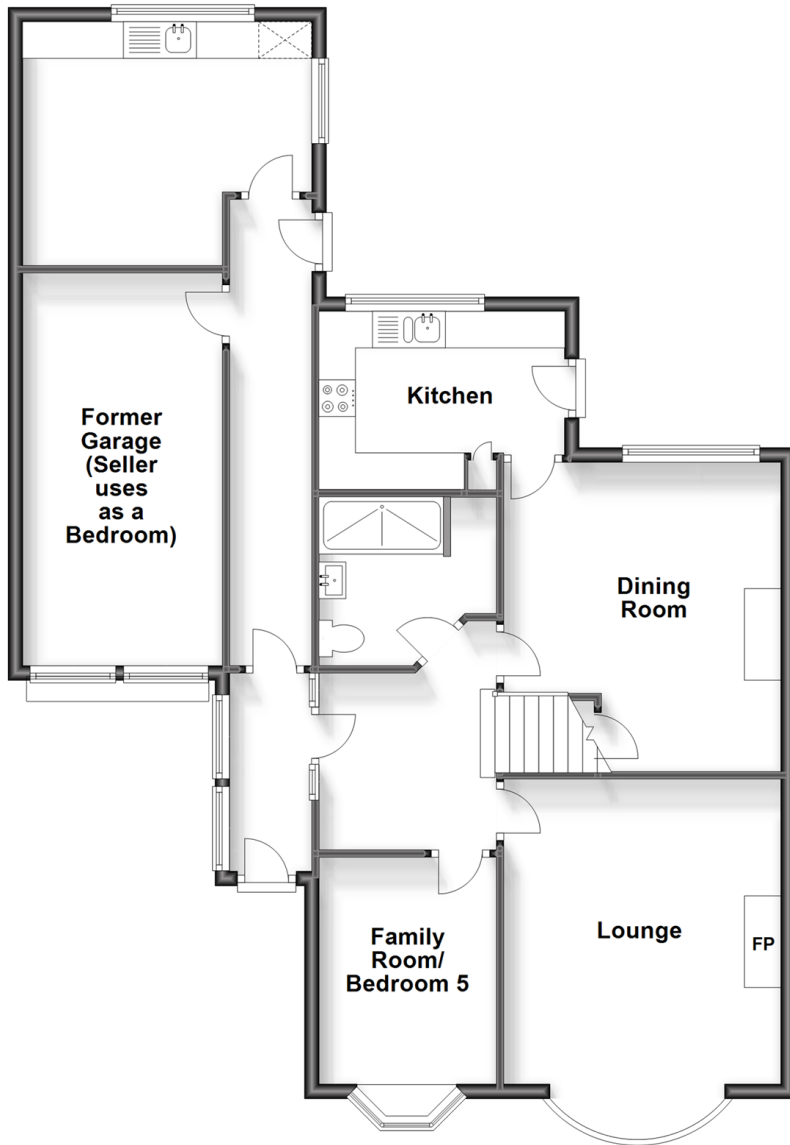
OVER 60?

Secure this property
for up to **59% less!**

Wards
Helping you move forwards

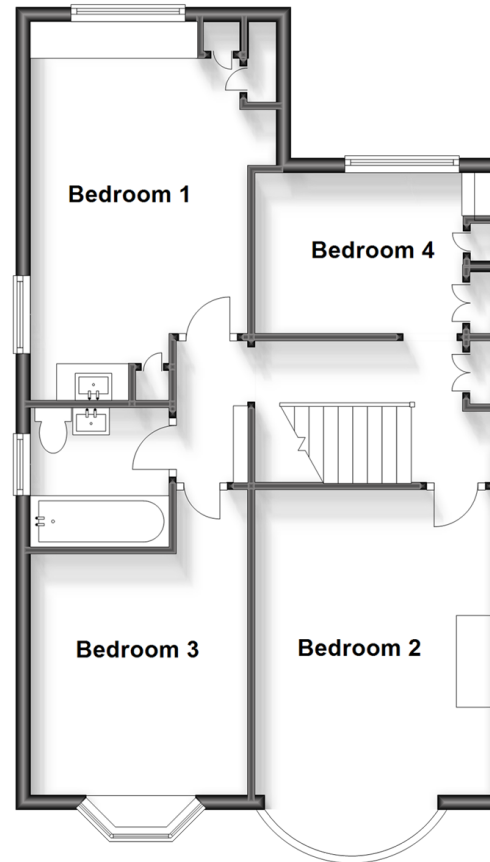
Ground Floor

Approx. 100.0 sq. metres (1076.6 sq. feet)



First Floor

Approx. 61.3 sq. metres (660.2 sq. feet)



Accommodation

GROUND FLOOR

Entrance Hallway

Lounge: 16'5 x 12'1 (5.01m x 3.69m)

Family Room/Bedroom 5: 10'4 x 7'7 (3.15m x 2.31m)

Dining room: 13'0 x 12'5 (3.97m x 3.79m)

Kitchen: 10'3 x 7'8 (3.13m x 2.34m)

Shower Room: 7'0 x 5'7 (2.14m x 1.70m)

Utility: 13'0 x 9'4 (3.97m x 2.85m)

Former Garage : 18'0 x 8'1 (5.49m x 2.47m)

FIRST FLOOR

Landing

Bathroom

Bedroom 1: 16'4 x 10'4 (4.98m x 3.15m)

Bedroom 2: 15'0 x 8'9 (4.58m x 2.67m)

Bedroom 3: 10'0 x 8'7 (3.05m x 2.62m)

Bedroom 4: 8'9 x 6'7 (2.67m x 2.01m)

OUTSIDE

Driveway

Front Garden

Rear Garden



Main features

- Versatile 5/6 bedroom semi-detached family home
- Downstairs shower room and upstairs bathroom
- Ideal for multi-generational families or those looking to work from home
- Close to local shops and schools
- Within walking distance of Sidcup railway station



Nearest Schools

Primary Schools: Longlands Primary 0.1 miles, Dulverton Primary 0.5 miles, Holy Trinity Lamorbey C of E Primary 0.5 miles
Secondary Schools: Hurstmere Foundation School for Boys 0.5 miles, Chis and Sid Grammar School 0.7 miles



Transport Information

Train Stations: Sidcup 0.5 miles, New Eltham 0.9 miles, Albany Park 1.4 miles



Address

Longlands Road, Sidcup, Kent, DA15



Directions

For directions to this property please contact us.



Wards
Helping you move forwards

Call Welling Branch 020 8301 6679 ■ wardsofkent.co.uk



■ Legal advice should be taken to verify fixtures/fittings, planning, alterations and/or lease details ■ Appliances & services are untested, dimensions are approximate and floor plans are not to scale
■ Through a Homewise Home For Life Plan people aged 60+ can secure this property for up to 59% less, by purchasing a Lifetime Lease.



15008231/20231007/CD/LK