



Price
£600,000

Freehold

5x  2x  2x 

**Avondale Road, Welling,
Kent, DA16**

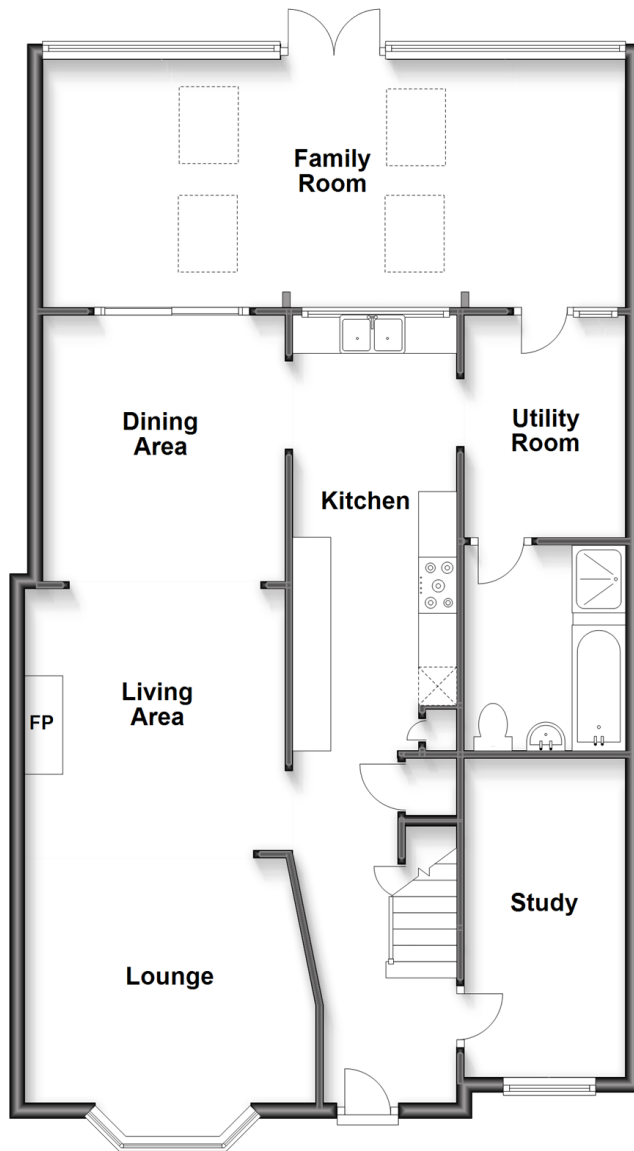
OVER 60?

Secure this property
for up to **59% less!**

Wards
Helping you move forwards

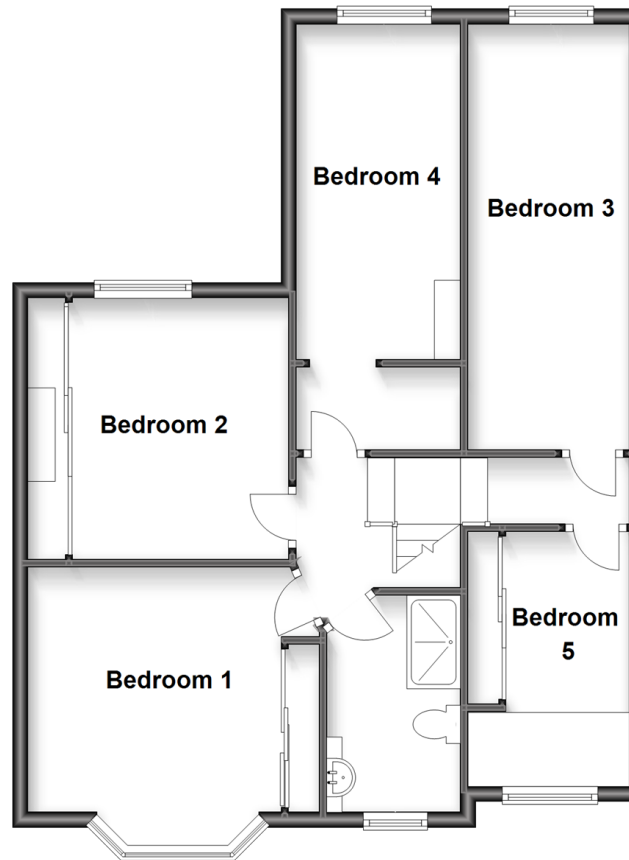
Ground Floor

Approx. 104.7 sq. metres (1127.5 sq. feet)



Split Level First Floor

Approx. 67.7 sq. metres (728.7 sq. feet)



Accommodation

GROUND FLOOR

Hallway

Lounge/Living Area: 37'0 x 10'4 at widest point (11.29m x 3.15m)

Dining Area

Family Room: 24'1 x 11'0 (7.35m x 3.36m)

Kitchen: 21'2 x 6'10 (6.46m x 2.08m)

Utility Room

Bathroom

Study: 14'6 x 6'7 (4.42m x 2.01m)

SPLIT LEVEL FIRST FLOOR

Landing

Bedroom 1: 12'0 x 9'11 (3.66m x 3.02m)

Bedroom 2: 11'0 x 9'0 (3.36m x 2.75m)

Bedroom 3: 18'2 x 6'7 (5.54m x 2.01m)

Bedroom 4: 14'11 x 7'0 (4.55m x 2.14m)

Bedroom 5

Shower Room

OUTSIDE

Driveway

Rear Garden

Workshop/Out building



Main features

- Family home consists of large Lounge/Living Area and a spacious Kitchen and Dining Area
- A lovely family room which overlooks the garden
- Ground floor Study perfect for a home office
- Ample off-street parking for two cars and to the rear is a garden with 2 lounge areas
- Potential to extend in the loft subject to obtaining the necessary planning permission.



Nearest Schools

Primary Schools: Foster's Primary 0.2 miles, St Michael's East Wickham C of E Voluntary Aided Primary 0.2 miles, Barrington Primary 0.3 miles
Secondary Schools: Welling School 0.2 miles, Bexley Grammar School 0.8 miles, Bexleyheath School 1.0 miles



Transport Information

Train Stations: Bexleyheath 0.6 miles, Welling 0.7 miles, Abbey Wood 1.6 miles



Address

Avondale Road, Welling, Kent, DA16



Directions

For directions to this property please contact us.



Call Welling Branch 020 8301 6679 ■ wardsofkent.co.uk



- Legal advice should be taken to verify fixtures/fittings, planning, alterations and/or lease details
- Appliances & services are untested, dimensions are approximate and floor plans are not to scale
- Through a Homewise Home For Life Plan people aged 60+ can secure this property for up to 59% less, by purchasing a Lifetime Lease.



15008508/20230620/AM/DH