



Price
£475,000

Freehold

3x  1x  2x 

**Kenmere Road, Welling,
Kent, DA16**

OVER 60?

Secure this property
for up to **59% less!**

Wards
Helping you move forwards



Main features

- **Very popular location**
- **Great size garden with garage to the rear**
- **Excellent potential on this property too make your own**
- **Being sold with no chain**
- **Walking distance to train station and local high street**

Accommodation

GROUND FLOOR

Hallway
 Lounge: 12'3 x 12'2 (3.74m x 3.71m)
 Dining Room: 10'6 x 10'6 (3.20m x 3.20m)
 Kitchen: 11'0 x 6'5 (3.36m x 1.96m)

FIRST FLOOR

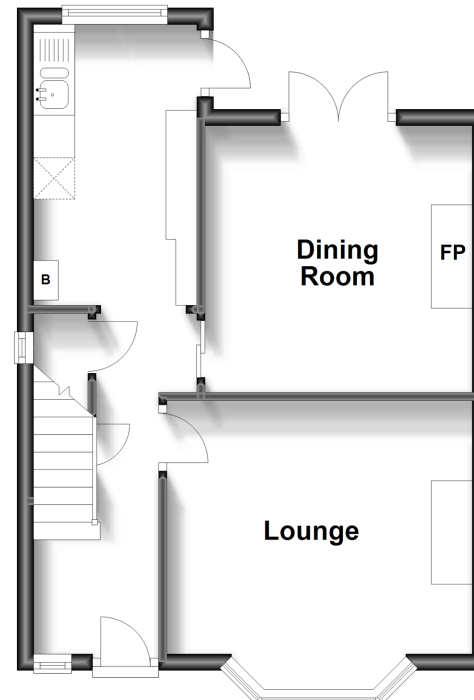
Landing
 Bedroom 1: 12'3 x 9'10 (3.74m x 3.00m)
 Bedroom 2: 10'10 x 10'8 (3.30m x 3.25m)
 Bedroom 3: 8'4 x 6'5 (2.54m x 1.96m)
 Bathroom

OUTSIDE

Front Garden
 Rear Garden
 Garage To the Rear

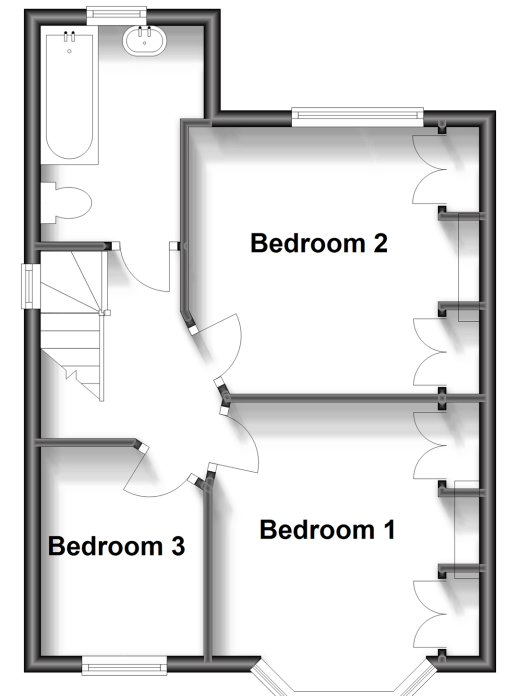
Ground Floor

Approx. 36.7 sq. metres (395.2 sq. feet)



First Floor

Approx. 36.7 sq. metres (394.9 sq. feet)



Call Welling - 020 8301 6679 ■ wardsofkent.co.uk

■ Legal advice should be taken to verify fixtures/fittings, planning, alterations and/or lease details
 ■ Through a Homewise Home For Life Plan people aged 60+ can secure this property for up to 59% less, by purchasing a Lifetime Lease.

■ Appliances & services are untested, dimensions are approximate and floor plans are not to scale

