



OVER 60?

Secure this property
for up to **59% less!**

Price

£450,000

Freehold

3x  1x  1x 

**Albatross Street,
London, SE18**

Wards
Helping you move forwards



Main features

- Well presented property
- Easy to maintain Rear Garden
- Close to both Plumstead and Winns Common
- Good size rooms throughout
- This property is situated in a popular location

Accommodation

GROUND FLOOR

Entrance Porch
Lounge: 14'2 x 13'7 (4.32m x 4.14m)
Dining Area: 11'5 x 11'1 (3.48m x 3.38m)
Kitchen: 12'8 x 7'10 (3.86m x 2.39m)

FIRST FLOOR

Landing
Bedroom 1: 11'2 x 8'7 (3.41m x 2.62m)
Bedroom 2: 14'2 x 10'8 (4.32m x 3.25m)
Bathroom

SECOND FLOOR

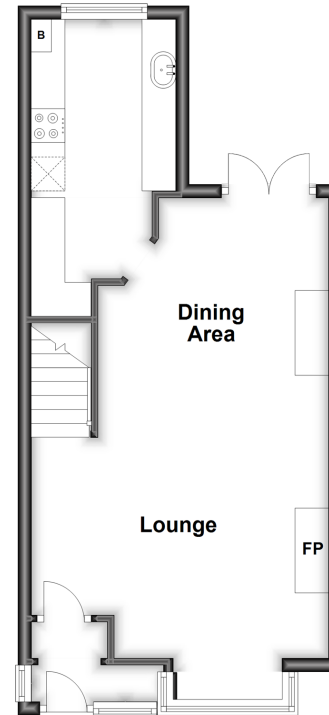
Bedroom 3: 17'6 x 9'5 (5.34m x 2.87m)

OUTSIDE

Front Steps and Courtyard Area
Rear Garden

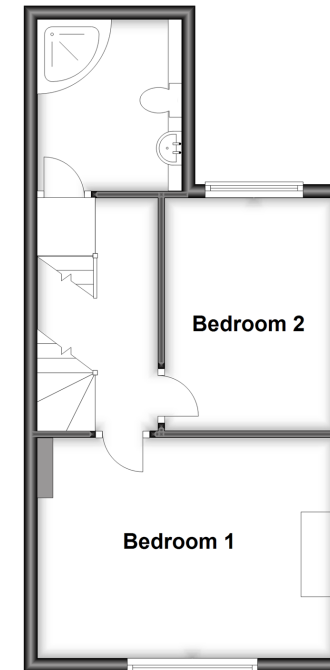
Ground Floor

Approx. 37.4 sq. metres (402.2 sq. feet)



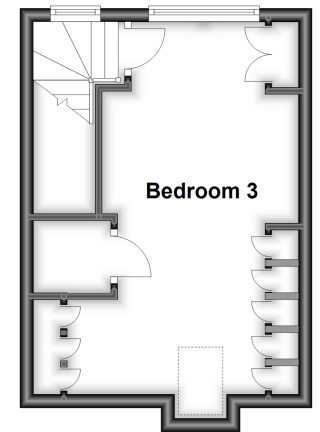
Split Level First Floor

Approx. 35.6 sq. metres (383.4 sq. feet)



Second Floor

Approx. 21.9 sq. metres (236.2 sq. feet)



Call Welling - 020 8301 6679 ■ wardsofkent.co.uk

■ Legal advice should be taken to verify fixtures/fittings, planning, alterations and/or lease details
■ Through a Homewise Home For Life Plan people aged 60+ can secure this property for up to 59% less, by purchasing a Lifetime Lease.

■ Appliances & services are untested, dimensions are approximate and floor plans are not to scale



15008537/20230308/AM/JH