



Price
£250,000

Leasehold

2x  1x  1x 

**Links View, Cleanthus
Close, London, SE18**

Wards
Helping you move forwards



Main features

- 2 bedroom ground floor apartment - Chain free
- Popular location in Shooters Hill
- Large communal garden with great views
- Good size bedrooms and lots of living space
- Good for transport links shops and motorway access

Accommodation

GROUND FLOOR

Hallway

Lounge: 16'0 x 12'0 (4.88m x 3.66m)

Kitchen: 7'0 x 7'0 (2.14m x 2.14m)

Bedroom 1: 11'0 x 7'0 (3.36m x 2.14m)

Bedroom 2: 11'0 x 10'0 (3.36m x 3.05m)

Bathroom

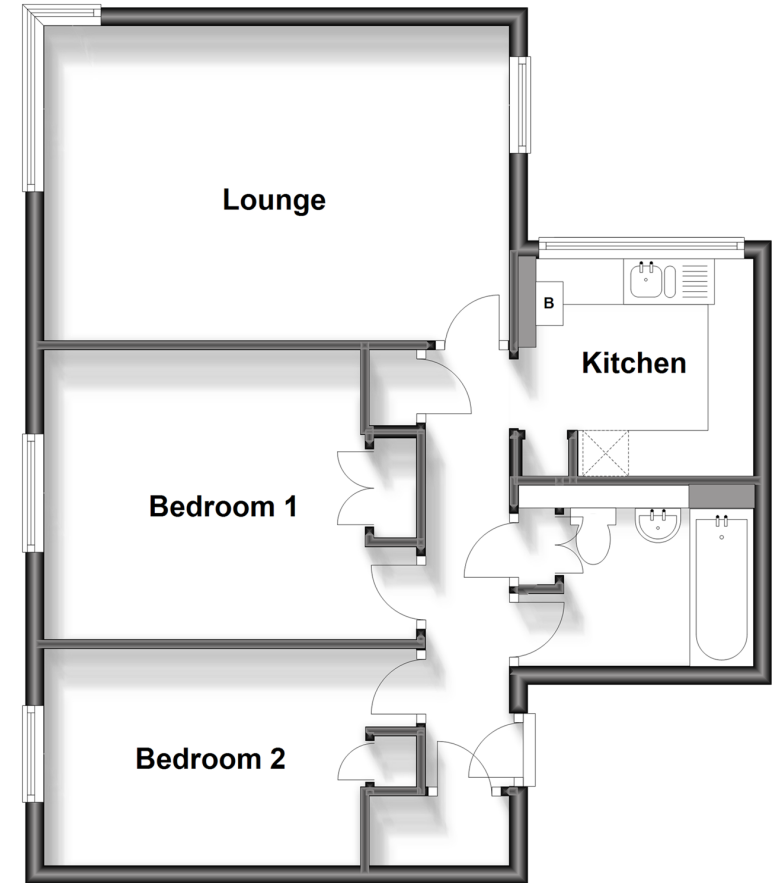
OUTSIDE

Garage en bloc

Communal Garden

Ground Floor

Approx. 59.1 sq. metres (636.4 sq. feet)



Call Welling - 020 8301 6679 ■ wardsof Kent.co.uk

- The seller is a person connected with Wards as defined in the Estate Agents Act 1979
- Legal advice should be taken to verify fixtures/fittings, planning, alterations and/or lease details
- Appliances & services are untested, dimensions are approximate and floor plans are not to scale



15008546/20230801/AM/DH