



Price
£300,000

Leasehold

2x  1x  1x 

**Bramley Court,
Wickham Street,
Welling, Kent, DA16**

OVER 60?

Secure this property
for up to **59% less!**

Wards
Helping you move forwards



Main features

- This property boasts its own rear garden and front garden area
- Garage en bloc
- Offered with a long lease
- This property is being sold chain free
- Local transport and amenities just a stroll away

Accommodation

GROUND FLOOR

Entrance Hall

Lounge: 16'5 x 11'2 (5.01m x 3.41m)

Kitchen: 10'5 x 8'0 (3.18m x 2.44m)

Bathroom

Bedroom 1: 12'5 x 10'3 (3.79m x 3.13m)

Bedroom 2: 10'11 x 7'4 (3.33m x 2.24m)

OUTSIDE

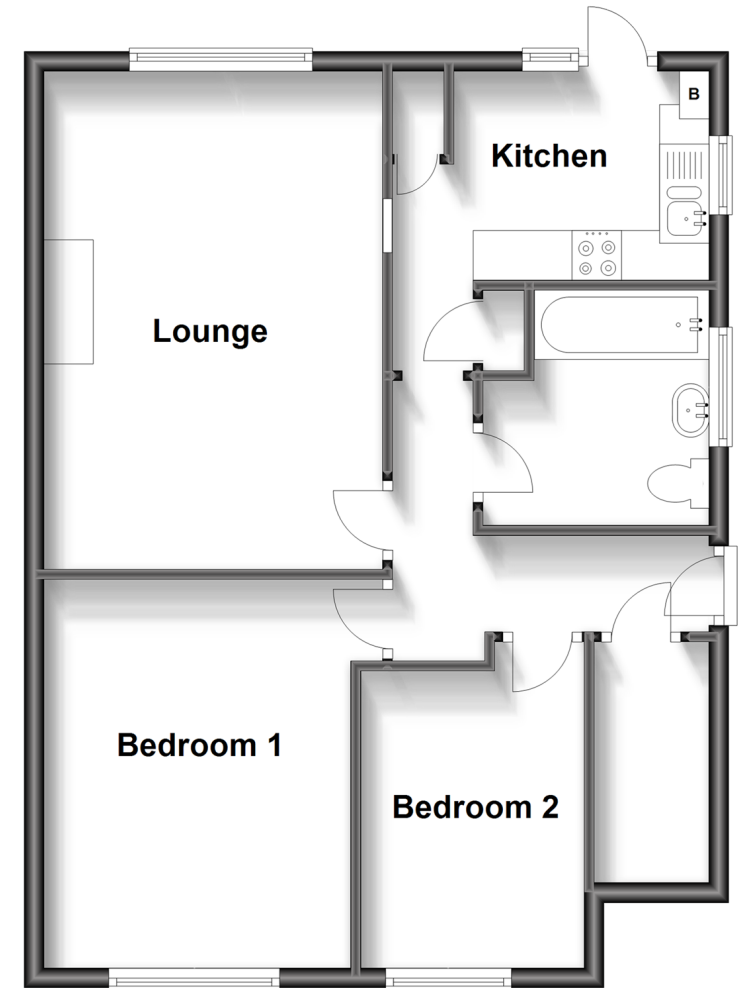
Front Garden Area

Own Rear Garden

Garage En-Bloc

Ground Floor

Approx. 59.6 sq. metres (641.7 sq. feet)



Call Welling - 020 8301 6679 ■ wardsofkent.co.uk

- Legal advice should be taken to verify fixtures/fittings, planning, alterations and/or lease details
- Appliances & services are untested, dimensions are approximate and floor plans are not to scale
- Through a Homewise Home For Life Plan people aged 60+ can secure this property for up to 59% less, by purchasing a Lifetime Lease.



15008612/20230703/CD/AM