



**Price**

**£300,000**

**Leasehold**

2x  1x  1x 

**Ankerdine Crescent,  
London, SE18**

*Wards*  
Helping you move forwards





## Main features

- Allocated parking
- Communal front and rear gardens
- This property offers spacious living accommodation
- Located only a short walk to bus routes
- Local primary schools walking distance away

## Accommodation

### FIRST FLOOR

Entrance Hall

Lounge: 16'1 x 14'3 (4.91m x 4.35m)

Kitchen: 10'10 x 9'1 (3.30m x 2.77m)

Bedroom 1: 11'2 x 9'1 (3.41m x 2.77m)

Bedroom 2: 9'1 x 8'11 (2.77m x 2.72m)

Bathroom

### OUTSIDE

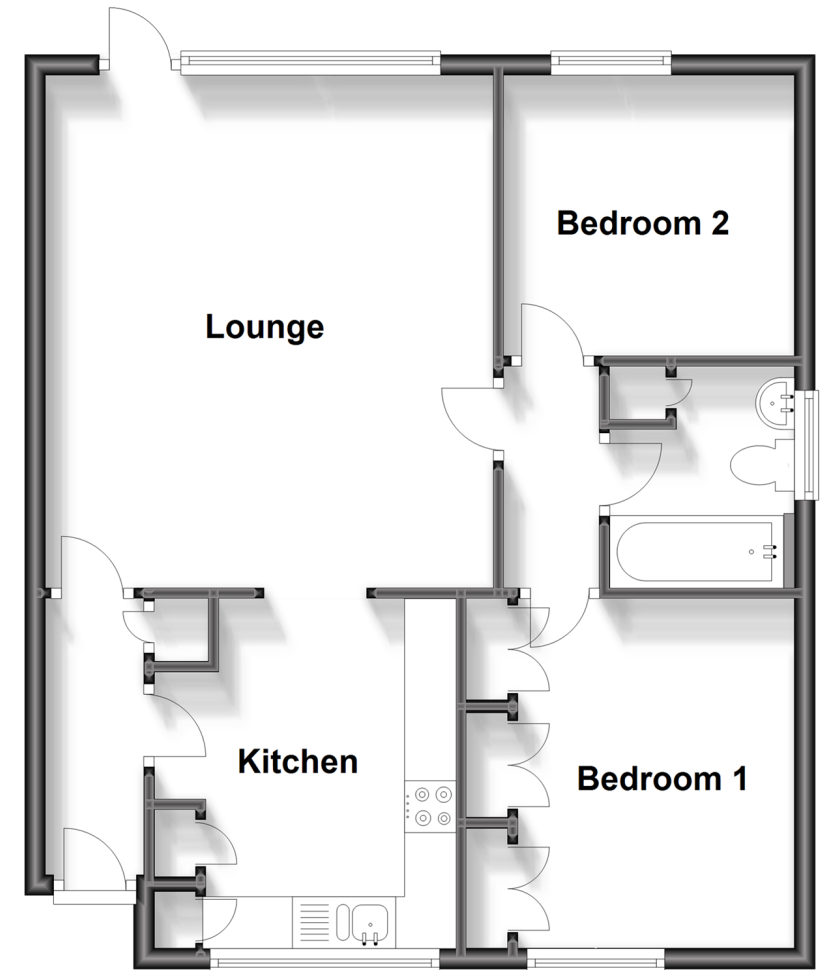
Front Garden

Communal Rear Garden

Allocated Parking

## First Floor

Approx. 60.2 sq. metres (648.2 sq. feet)



**Call Welling - 020 8301 6679 ■ [wardsofkent.co.uk](http://wardsofkent.co.uk)**

- Legal advice should be taken to verify fixtures/fittings, planning, alterations and/or lease details
- Appliances & services are untested, dimensions are approximate and floor plans are not to scale