



Price
£475,000

Freehold

3x  1x  1x 

**Burns Close, Welling,
Kent, DA16**

OVER 60?

Secure this property
for up to **59% less!**

Wards
Helping you move forwards



Main features

- Tucked into a quiet Cul-De-Sac
- Generous rear garden with side entrance
- Well presented property
- Open plan style living
- Perfect family home or those looking to downsize

Accommodation

GROUND FLOOR

Entrance Porch

Hallway

Lounge/Dining Area: 12'6 x 12'3 (3.81m x 3.74m) narrowing to 9'0 x 9'7 (2.75m x 2.92m)

Kitchen: 9'7 x 9'2 (2.92m x 2.80m)

FIRST FLOOR

Landing

Bedroom 1: 12'4 x 9'10 (3.76m x 3.00m)

Bedroom 2: 11'3 x 9'8 (3.43m x 2.95m)

Bedroom 3: 9'5 x 8'7 (2.87m x 2.62m)

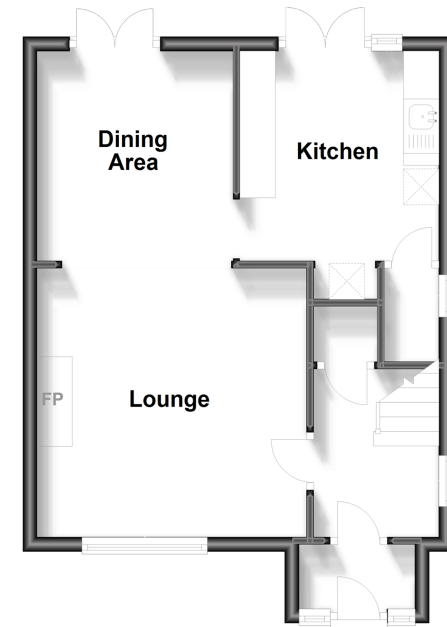
Bathroom

OUTSIDE

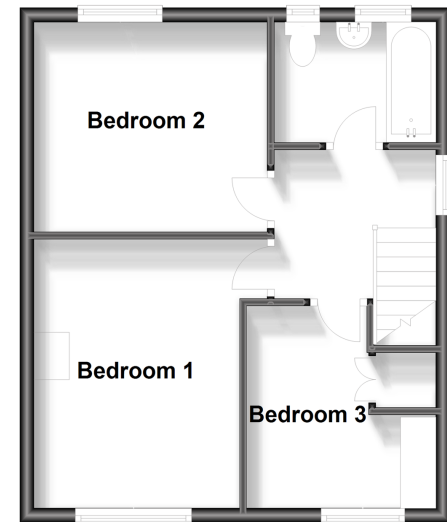
Driveway

Rear Garden

Ground Floor
Approx. 38.5 sq. metres (414.6 sq. feet)



First Floor
Approx. 38.5 sq. metres (414.6 sq. feet)



Call Welling - 020 8301 6679 ■ wardsofkent.co.uk

- Legal advice should be taken to verify fixtures/fittings, planning, alterations and/or lease details
- Appliances & services are untested, dimensions are approximate and floor plans are not to scale
- Through a Homewise Home For Life Plan people aged 60+ can secure this property for up to 59% less, by purchasing a Lifetime Lease.



15008665/20231113/CD/DH