



Price

£555,000

Freehold

4x  2x  1x 

**Northdown Road,
Welling, Kent, DA16**

OVER 60?

Secure this property
for up to **59% less!**

Wards
Helping you move forwards



Main features

- Loft conversion with En-suite
- Situated within walking distance to the stunning Danson Park
- Beautifully presented home
- Close to local schools and transport links
- Lovely rear garden

Accommodation

GROUND FLOOR

Entrance Porch
Hallway
Lounge: 23'2 x 12'3 (7.07m x 3.74m)
Kitchen: 16'8 x 15'0 (5.08m x 4.58m)

FIRST FLOOR

Landing
Bedroom 2: 12'2 x 9'11 (3.71m x 3.02m)
Bedroom 3: 10'10 x 10'5 (3.30m x 3.18m)
Bedroom 4: 7'5 x 6'5 (2.26m x 1.96m)
Bathroom

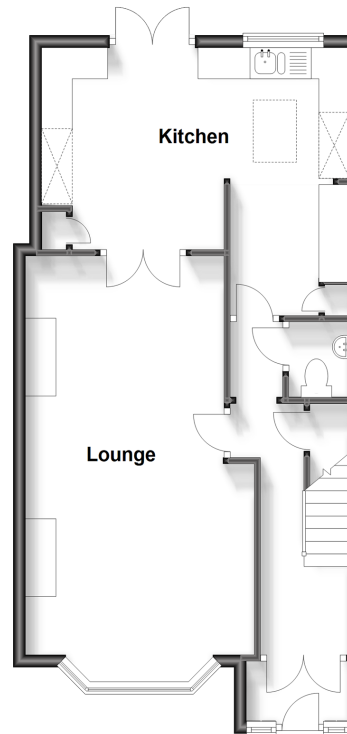
SECOND FLOOR

Bedroom 1: 15'3 x 12'7 (4.65m x 3.84m)
En suite Shower to Bedroom 1

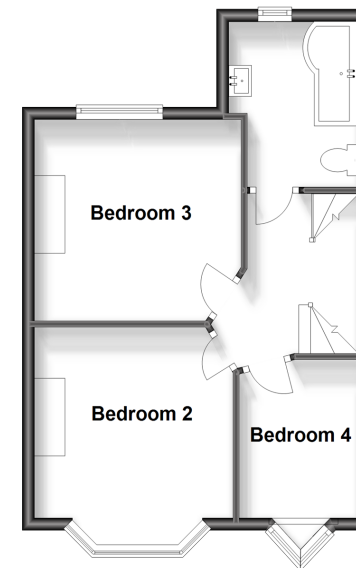
OUTSIDE

Shared Driveway
Rear Garden

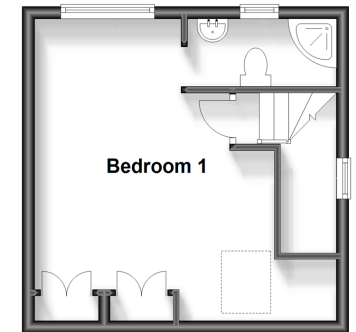
Ground Floor
Approx. 52.9 sq. metres (569.9 sq. feet)



First Floor
Approx. 37.9 sq. metres (407.4 sq. feet)



Second Floor
Approx. 24.0 sq. metres (258.2 sq. feet)



Call Welling - 020 8301 6679 ■ wardsofkent.co.uk

■ Legal advice should be taken to verify fixtures/fittings, planning, alterations and/or lease details
■ Through a Homewise Home For Life Plan people aged 60+ can secure this property for up to 59% less, by purchasing a Lifetime Lease.

■ Appliances & services are untested, dimensions are approximate and floor plans are not to scale