



Price
£300,000

Leasehold

2x  1x  2x 

**Wickham Lane, Abbey
Wood, London, SE2**

Wards
Helping you move forwards



Main features

- 2 bedroom top floor split level maisonette
- Has the potential to have a third bedroom instead of dining room
- Close to local schools
- Situated in a popular location
- Joint freehold responsibility is being arranged

Accommodation

SPLIT LEVEL GROUND FLOOR

Hallway

Lounge: 17'5 x 15'1 (5.31m x 4.60m)

Dining Room

Kitchen: 15'6 x 14'7 (4.73m x 4.45m)

FIRST FLOOR

Landing

Bedroom 1: 13'2 x 11'2 (4.02m x 3.41m)

Bedroom 2: 14'3 x 13'7 (4.35m x 4.14m)

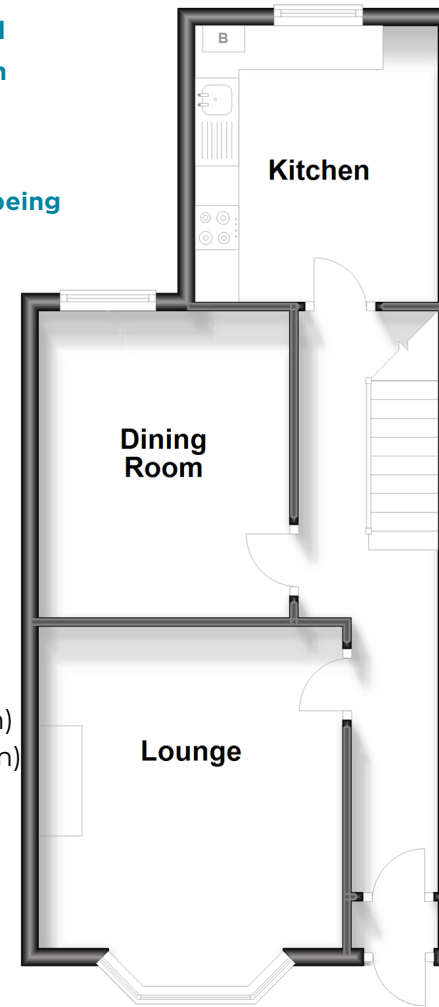
Bathroom

OUTSIDE

Front Pathway

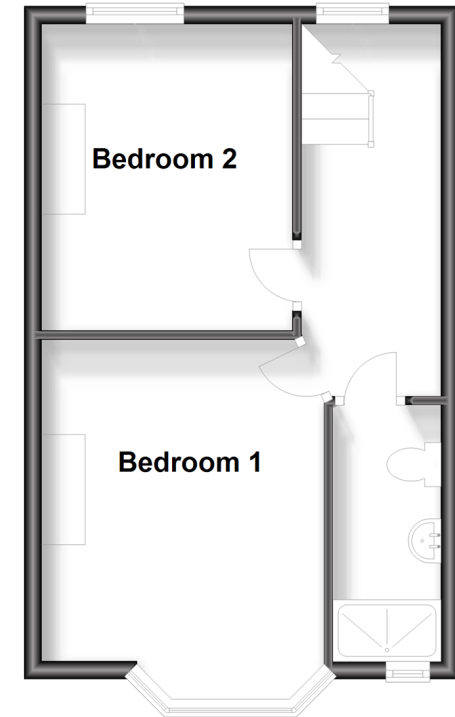
Split Level Ground Floor

Approx. 42.4 sq. metres (456.1 sq. feet)



First Floor

Approx. 33.4 sq. metres (359.6 sq. feet)



Call Welling - 020 8301 6679 ■ wardsofkent.co.uk

- Legal advice should be taken to verify fixtures/fittings, planning, alterations and/or lease details
- Appliances & services are untested, dimensions are approximate and floor plans are not to scale



15008677/20230911/LK/RG