



OVER 60?

Secure this property
for up to **59% less!**

Price

£650,000

Freehold

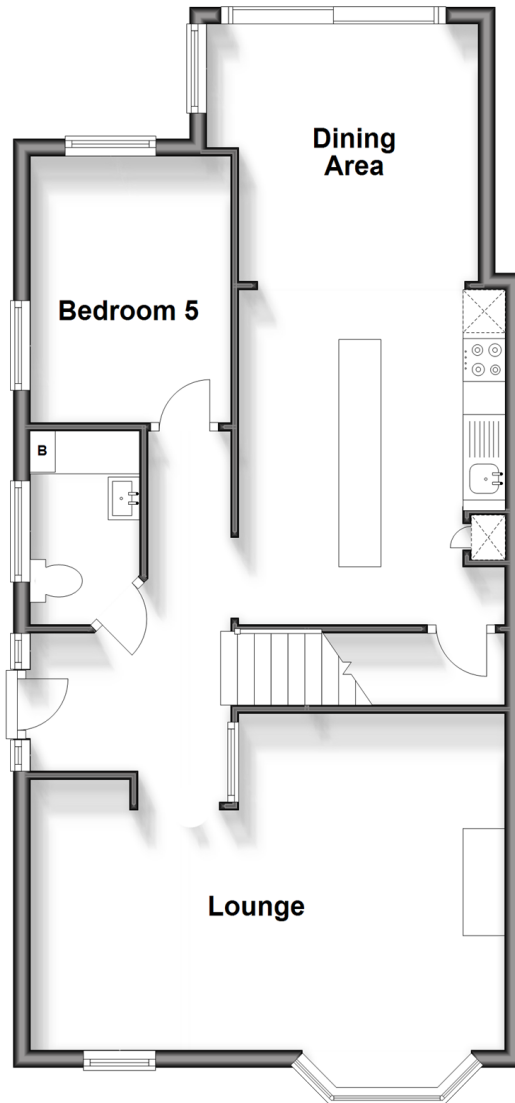
5x  1x  1x 

**Cedar Avenue, Sidcup,
Kent, DA15**

Wards
Helping you move forwards

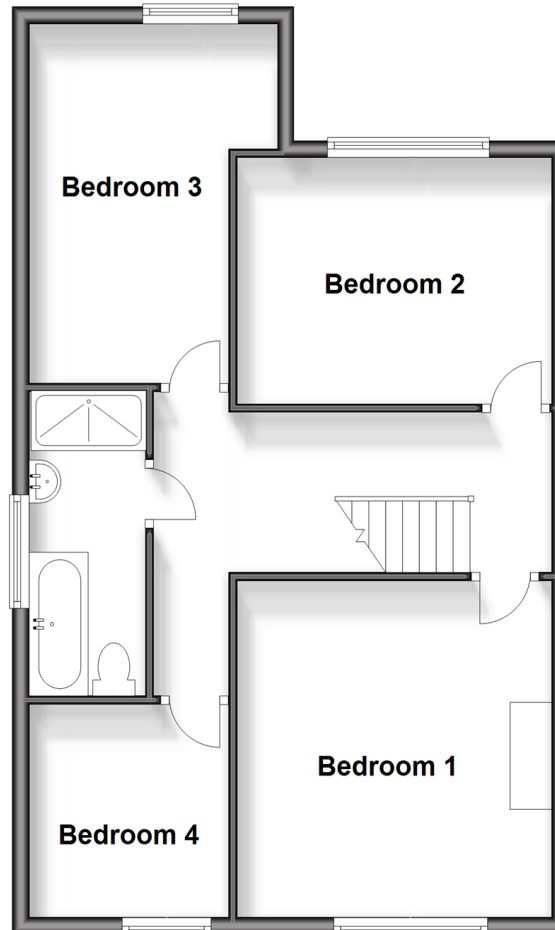
Ground Floor

Approx. 63.6 sq. metres (684.2 sq. feet)



Split Level First Floor

Approx. 59.7 sq. metres (642.3 sq. feet)



Accommodation

GROUND FLOOR

Hallway

Lounge: 18'4 x 12'8 (5.59m x 3.86m)

Bedroom 5: 10'3 x 8'5 (3.13m x 2.57m)

Kitchen/Dining Area: 13'10 x 9'4 (4.22m x 2.85m) plus 9'3 x 10'7 (2.82m x 3.23m)

Cloakroom

SPLIT LEVEL FIRST FLOOR

Landing

Bedroom 1: 12'9 x 12'0 (3.89m x 3.66m)

Bedroom 2: 12'1 x 9'5 (3.69m x 2.87m)

Bedroom 3: 13'8 x 10'6 (4.17m x 3.20m)

Bedroom 4: 8'11 x 7'9 (2.72m x 2.36m)

Bathroom

OUTSIDE

Driveway

Front Garden

Rear Garden



Main features

- Situated in great location close to Days Lane primary school
- Open style living overlooking the rear garden
- Bedroom 5 could also be used as a handy home office
- Well presented property
- Ample parking on the driveway
- Downstairs cloakroom



Nearest Schools

Primary Schools: Days Lane Primary 0.2 miles, Our Lady of The Rosary Catholic Primary 0.3 miles, Sherwood Park Primary 0.4 miles
 Secondary Schools: Marlborough School 0.3 miles, Blackfen for Girls 0.5 miles, Hurstmere School for Boys 0.6



Transport Information

Train Stations: Sidcup 0.8 miles, Albany Park 1.2 miles, Falconwood 1.2 miles



Address

Cedar Avenue, Sidcup, Kent, DA15



Directions

For directions to this property please contact us.





Wards
Helping you move forwards

Call Welling Branch 020 8301 6679 ■ wardsofkent.co.uk



- Legal advice should be taken to verify fixtures/fittings, planning, alterations and/or lease details
- Appliances & services are untested, dimensions are approximate and floor plans are not to scale
- Through a Homewise Home For Life Plan people aged 60+ can secure this property for up to 59% less, by purchasing a Lifetime Lease.



15008778/20240203/LM/AM