



Price
£450,000

Freehold

2x  1x  1x 

**Edison Road, Welling,
Kent, DA16**

Wards
Helping you move forwards



Main features

- Beautifully presented home
- Short walk to Welling Train Station and local shops
- Bright and Airy property
- Perfect space for entertaining in the Kitchen/Diner
- Two good sized bedrooms
- Easy to maintain rear garden

Accommodation

GROUND FLOOR

Entrance Hall

Lounge: 13'10 x 11'10 at widest point (4.22m x 3.61m)

Family Area

Kitchen/ Diner: 18'8 x 13'11 (5.69m x 4.24m)

Cloakroom

FIRST FLOOR

Landing

Bedroom 1: 12'1 x 10'1 (3.69m x 3.08m)

Bedroom 2: 11'1 x 8'9 (3.38m x 2.67m)

Bathroom : 9'5 x 8'8 (2.87m x 2.64m)

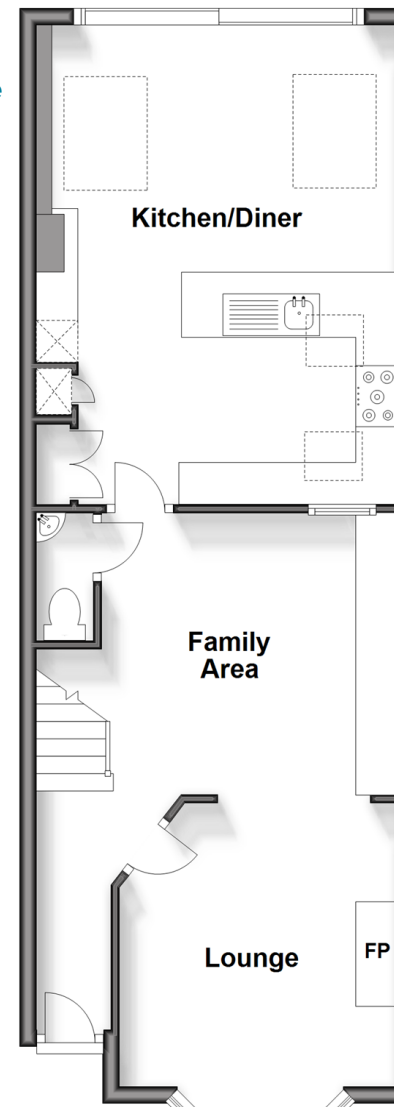
OUTSIDE

Front Patio

Rear Garden

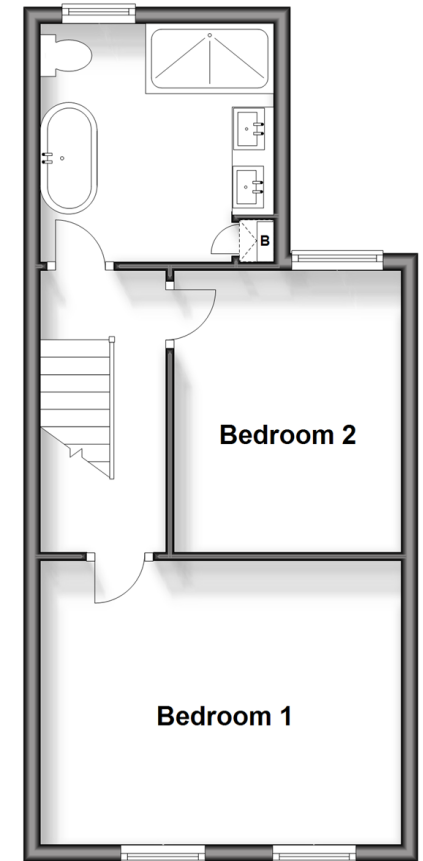
Ground Floor

Approx. 54.7 sq. metres (588.7 sq. feet)



Split Level First Floor

Approx. 38.1 sq. metres (409.9 sq. feet)



Call Welling - 020 8301 6679 ■ wardsofkent.co.uk

- Legal advice should be taken to verify fixtures/fitings, planning, alterations and/or lease details
- Appliances & services are untested, dimensions are approximate and floor plans are not to scale



15008790/20240120/CD/LK