



Price
£650,000

Freehold

3x  1x  1x 

**Danson Road, Bexley,
Kent, DA5**

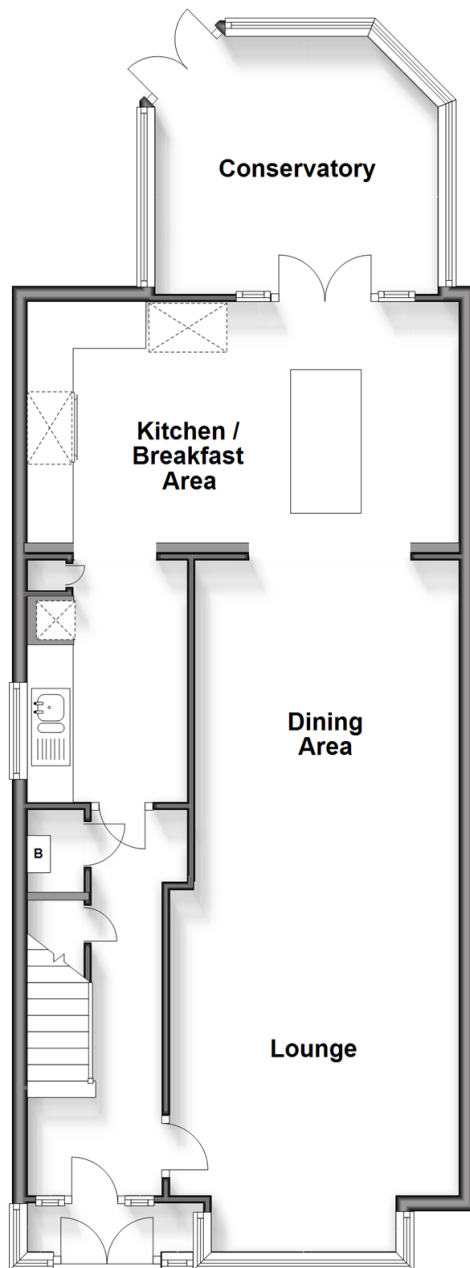
OVER 60?

Secure this property
for up to **59% less!**

Wards
Helping you move forwards

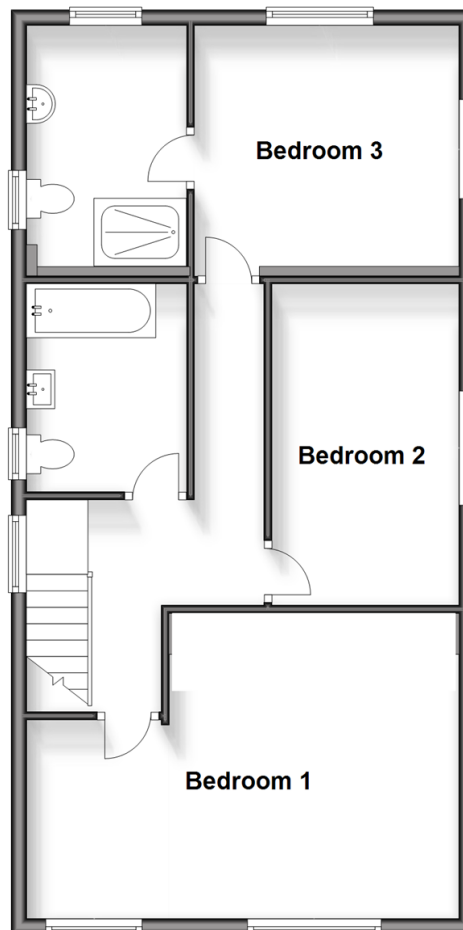
Ground Floor

Approx. 79.7 sq. metres (857.8 sq. feet)



First Floor

Approx. 64.8 sq. metres (697.2 sq. feet)



Accommodation

GROUND FLOOR

Entrance Porch

Hallway

Lounge/Dining Area: 29'8 x 16'1 (9.05m x 4.91m)

Kitchen/Breakfast Area: (L-shaped) 18'6 x 10'8 (5.64m x 3.25m) plus 10'8 x 21'6 (3.25m x 6.56m)

Conservatory: 11'7 x 10'9 (3.53m x 3.28m)

FIRST FLOOR

Landing

Bedroom 1: 18'7 x 12'8 (5.67m x 3.86m)

Bedroom 2: 13'5 x 8'4 (4.09m x 2.54m)

Bedroom 3: 11'3 x 10'2 (3.43m x 3.10m)

En Suite shower to bedroom 3

Bathroom: 8'6 x 7'2 (2.59m x 2.19m)

OUTSIDE

Driveway

Front Garden

Rear Garden

Shared driveway to the rear

Garage/Office: 17'7 x 10'3 (5.36m x 3.13m)



Main features

- This detached house has plenty of kerb appeal and is deceiving in size
- Highly sought after road
- Ample parking for this property
- Fantastic space for entertaining
- Easy to maintain garden with a Garage/Office to the rear
- Walking distance to local shops and Danson park



Nearest Schools

Primary Schools: Sherwood Park Primary 0.4 miles, Crook Log Primary 0.6 miles, Hurst Primary 0.6 miles
Secondary Schools: Blackfen School for Girls 0.3 miles, Bexley Grammar School 0.7 miles, Townley Grammar School for Girls 0.8 miles



Transport Information

Train Stations: Albany Park 0.9 miles, Bexleyheath 1.0 miles, Welling 1.2 miles



Address

Danson Road, Bexley, Kent, DA5



Directions

For directions to this property please contact us.



Wards
Helping you move forwards

Call Welling Branch 020 8301 6679 ■ wardsofkent.co.uk



- Legal advice should be taken to verify fixtures/fittings, planning, alterations and/or lease details
- Appliances & services are untested, dimensions are approximate and floor plans are not to scale
- Through a Homewise Home For Life Plan people aged 60+ can secure this property for up to 59% less, by purchasing a Lifetime Lease.



15008791/20240220/SK/LK