



**OVER 60?**

Secure this property  
for up to **59% less!**

**Price**

**£600,000**

**Freehold**

3x  2x  2x 

**High Grove, London,  
SE18**

*Wards*  
Helping you move forwards





## Main features

- Semi detached house with versatile layout including studio annexe
- The annexe can be accessed internally
- Ample parking to the front
- Short walk to Plumstead common and local shops

## Accommodation

### GROUND FLOOR

Entrance Porch  
Hallway  
Dining Area/Lounge: 25'8 x 13'0 (7.83m x 3.97m)  
Kitchen: 9'1 x 7'7 (2.77m x 2.31m)  
Cloakroom  
Utility Room: 8'3 x 7'9 (2.52m x 2.36m)

### ANNEXE

Living Room/Kitchen: 24'1 x 10'6 (7.35m x 3.20m)  
En suite Shower  
Utility Room: 7'9 x 5'1 (2.36m x 1.55m)

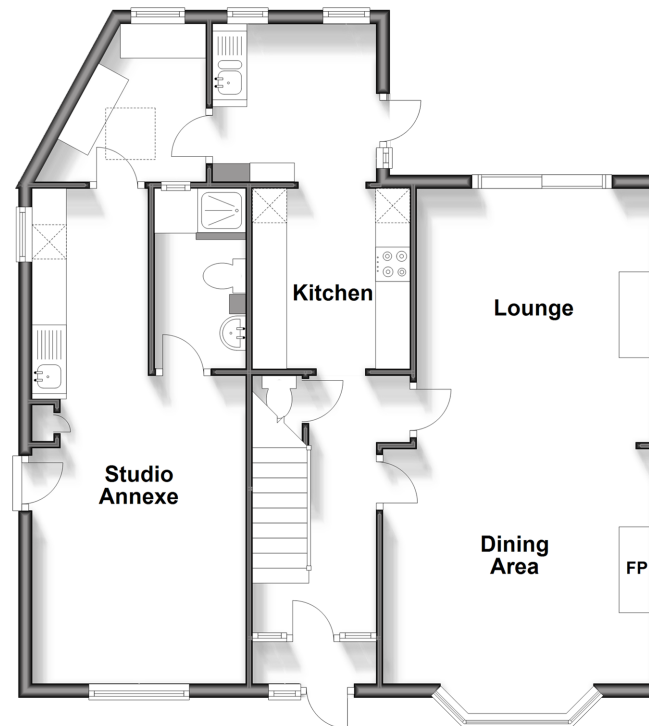
### FIRST FLOOR

Landing  
Bedroom 1: 13'0 x 10'11 (3.97m x 3.33m)  
Bedroom 2: 12'3 x 10'11 (3.74m x 3.33m)  
Bedroom 3: 8'6 x 8'1 (2.59m x 2.47m)  
Bathroom  
Separate Toilet

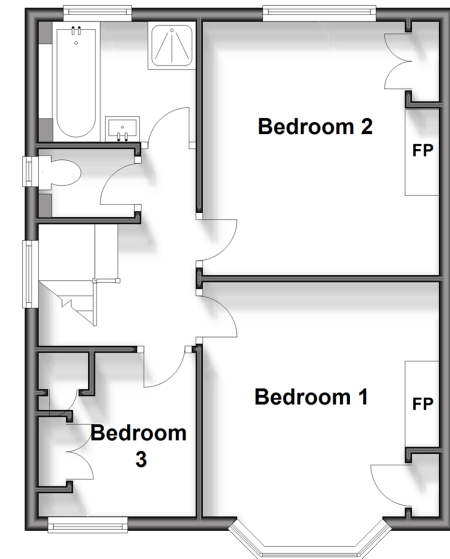
### OUTSIDE

Driveway  
Front Garden  
Rear Garden

Ground Floor



First Floor



**Call Welling - 020 8301 6679 ■ [wardsofkent.co.uk](http://wardsofkent.co.uk)**

■ Legal advice should be taken to verify fixtures/fittings, planning, alterations and/or lease details  
■ Through a Homewise Home For Life Plan people aged 60+ can secure this property for up to 59% less, by purchasing a Lifetime Lease.

■ Appliances & services are untested, dimensions are approximate and floor plans are not to scale



15008797/20240207/JS/DH