



OVER 60?

Secure this property
for up to **59% less!**

Price

£480,000

Freehold

3x  2x  2x 

**Westbrooke Crescent,
Welling, Kent, DA16**

Wards
Helping you move forwards



Main features

- Well presented property
- Conservatory overlooking the well kept rear garden
- Ground floor bathroom and upstairs shower room
- Sought after location
- Situated close to local shops and schools

Accommodation

GROUND FLOOR

Entrance Hallway
 Lounge: 12'7 x 12'0 (3.84m x 3.66m)
 Dining Area: 11'8 x 10'2 (3.56m x 3.10m)
 Kitchen : 6'9 x 6'6 (2.06m x 1.98m)
 Conservatory
 Bathroom

FIRST FLOOR

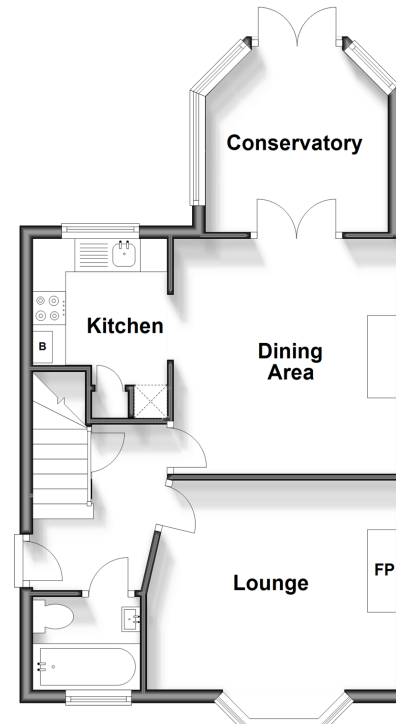
Landing
 Bedroom 1: 11'5 x 10'3 (3.48m x 3.13m)
 Bedroom 2: 12'7 x 10'9 (3.84m x 3.28m)
 Bedroom 3
 Shower Room

OUTSIDE

Driveway
 Rear Garden

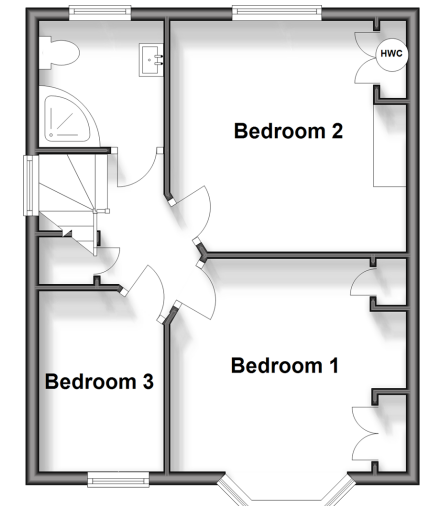
Ground Floor

Approx. 46.0 sq. metres (495.1 sq. feet)



First Floor

Approx. 38.5 sq. metres (414.5 sq. feet)



Call Welling - 020 8301 6679 ■ wardsofkent.co.uk

■ Legal advice should be taken to verify fixtures/fittings, planning, alterations and/or lease details
 ■ Through a Homewise Home For Life Plan people aged 60+ can secure this property for up to 59% less, by purchasing a Lifetime Lease.

■ Appliances & services are untested, dimensions are approximate and floor plans are not to scale

