



OVER 60?

Secure this property
for up to **59% less!**

Price

£900,000

Freehold

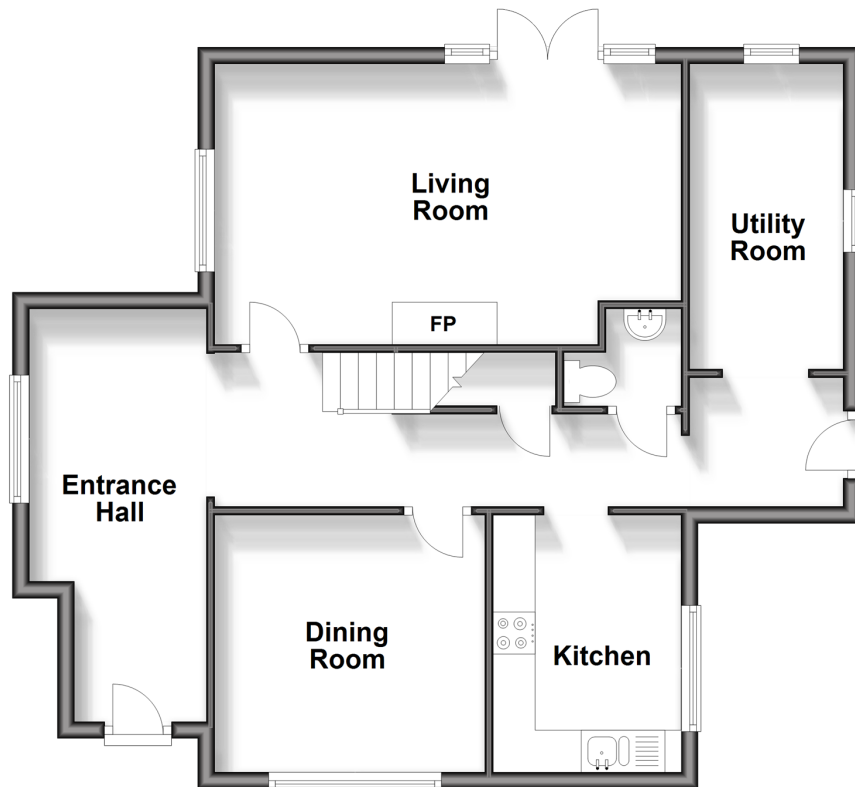
3x  1x  2x 

**Danson Park,
Bexleyheath, Kent, DA6**

Wards
Helping you move forwards

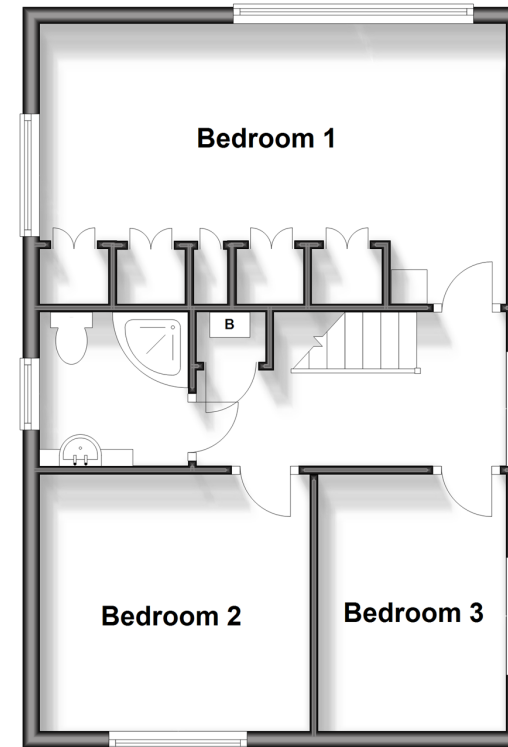
Ground Floor

Approx. 67.0 sq. metres (721.2 sq. feet)



First Floor

Approx. 46.9 sq. metres (504.5 sq. feet)



Accommodation

GROUND FLOOR

Entrance Hallway: 15'7 x 7'0 (4.75m x 2.14m)

Cloakroom

Living Room: 18'2 x 10'9 (5.54m x 3.28m)

Dining Room: 10'1 x 10'0 (3.08m x 3.05m)

Kitchen: 9'7 x 7'3 (2.92m x 2.21m)

Utility Room: 17'4 x 6'2 (5.29m x 1.88m)

FIRST FLOOR

Landing

Bedroom 1: 17'9 x 7'8 (5.41m x 2.34m)

Bedroom 2: 10'1 x 10'1 (3.08m x 3.08m)

Bedroom 3: 10'1 x 7'1 (3.08m x 2.16m)

Shower Room

OUTSIDE

Driveway

Side Garage

Rear Garden



Main features

- Fabulous potential to make this your dream home
- Located with the grounds of Danson Park
- Views over the lake
- Detached garage
- Possibility to extend subject to planning permission
- Easy access to the local bus routes, schools and shops



Nearest Schools

Primary Schools: Crook Log Primary 0.2 miles, Foster's Primary 0.4 miles, Danson Primary 0.6 miles

Secondary Schools: Blackfen School for Girls 0.6 miles, Bexley Grammar School 0.6 miles, Townley Grammar



Transport Information

Train Stations: Bexleyheath 0.7 miles, Welling 1.0 miles, Albany Park 1.3 miles
Underground Upney 5.7 miles, Becontree 5.8 miles, North Greenwich 5.9 miles



Address by George V 4.0 miles, Gallions Reach 4.3 miles, Danson Park, Bexleyheath, Kent, DA6



Directions

For directions to this property please contact us.



Call Welling Branch 020 8301 6679 ■ wardsofkent.co.uk



- Legal advice should be taken to verify fixtures/fittings, planning, alterations and/or lease details
- Appliances & services are untested, dimensions are approximate and floor plans are not to scale
- Through a Homewise Home For Life Plan people aged 60+ can secure this property for up to 59% less, by purchasing a Lifetime Lease.



15008862/20240402/LK/LK