



Price

£475,000

Freehold

4x  1x  2x 

Upper Wickham Lane,  
Welling, Kent, DA16

*Wards*  
Helping you move forwards





## Main features

- No onward purchase
- Ground floor cloakroom
- Rear garden with potential for parking
- Large living space and kitchen
- Walking distance to Welling High Street and train station.

## Accommodation

### SPLIT LEVEL GROUND FLOOR

Hallway

Cloakroom

Lounge: 13'9 x 13'5 (4.19m x 4.09m)

Dining Room: 12'8 x 10'9 (3.86m x 3.28m)

Kitchen: 18'8 x 9'1 (5.69m x 2.77m)

### SPLIT LEVEL FIRST FLOOR

Landing

Bedroom 1: 13'1 x 11'1 (3.99m x 3.38m)

Bedroom 2: 12'9 x 11'1 (3.89m x 3.38m)

Bedroom 3: 9'0 x 8'4 (2.75m x 2.54m)

Bedroom 4: 8'5 x 5'0 (2.57m x 1.53m)

Bathroom

Separate Toilet

### OUTSIDE

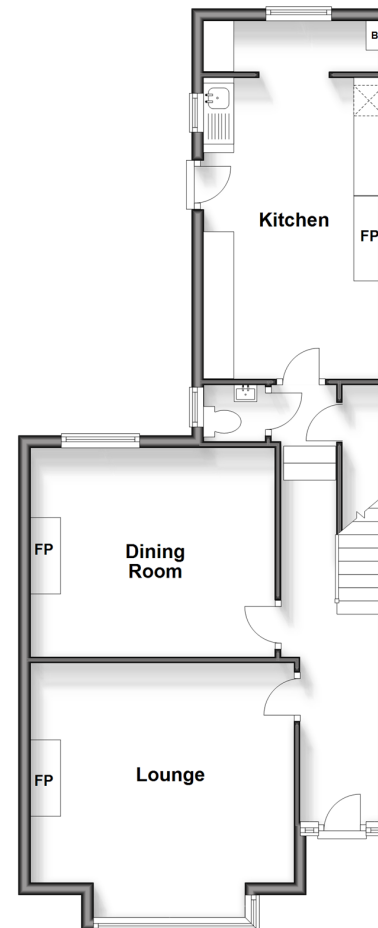
Front Garden

Rear Garden

Garage

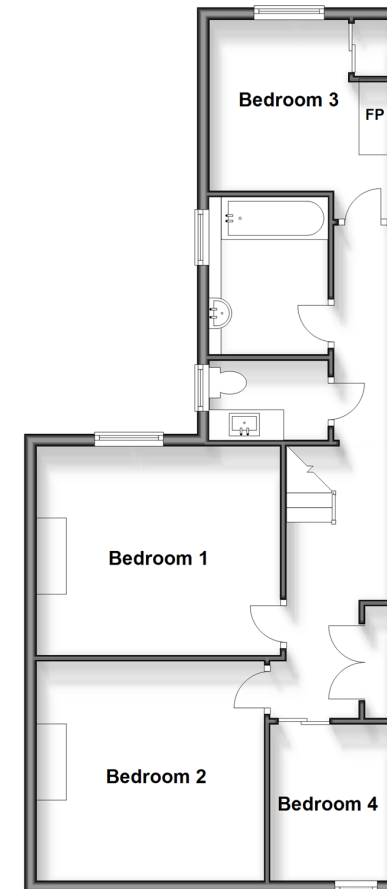
### Split Level Ground Floor

Approx. 62.3 sq. metres (670.8 sq. feet)



### Split Level First Floor

Approx. 62.4 sq. metres (671.5 sq. feet)



**Call Welling - 020 8301 6679 ■ [wardsofkent.co.uk](http://wardsofkent.co.uk)**

- Legal advice should be taken to verify fixtures/fittings, planning, alterations and/or lease details
- Appliances & services are untested, dimensions are approximate and floor plans are not to scale



15008879/20240516/LK/LK