



**Price**

**£85,000**

**Leasehold**

1x  1x  1x 

**Queens Court, Queens  
Parade, Cliftonville,  
Margate, Kent, CT9**

*Wards*  
Helping you move forwards



## Main features

- Retirement flat on the first floor
- Age restrictions apply
- Sea views and no chain
- Lift to all floors
- Newly decorated with new carpets
- Secure building with entry phone system and house manager
- Free parking on site
- Communal gardens and lounge

## Accommodation

### FIRST FLOOR

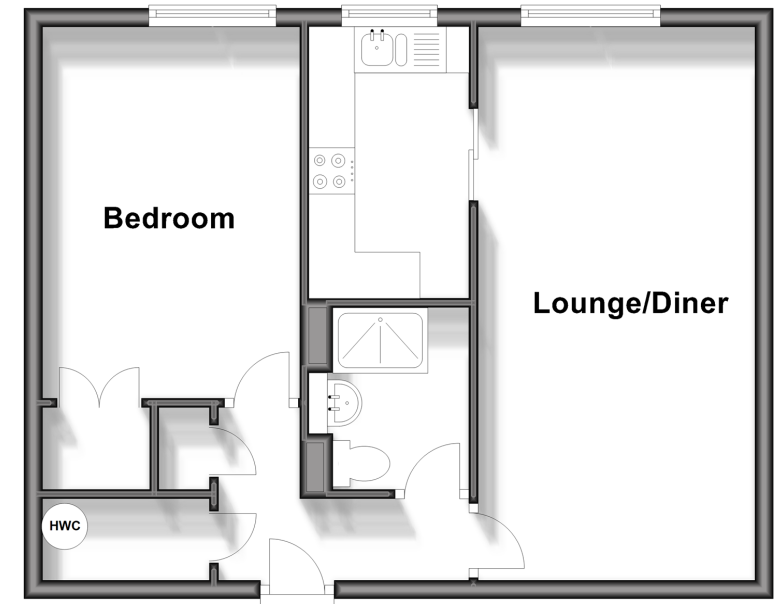
Hallway  
 Lounge/Diner: 19'10 x 9'10 (6.05m x 3.00m)  
 Kitchen: 9'7 x 6'2 (2.92m x 1.88m)  
 Bedroom: 13'8 x 9'4 (4.17m x 2.85m)  
 Shower Room: 6'3 x 6'1 (1.91m x 1.86m)

### OUTSIDE

Communal Gardens

## First Floor

Approx. 46.3 sq. metres (498.5 sq. feet)



Call Cliftonville - 01843 227447 ■ [wardsofKent.co.uk](http://wardsofKent.co.uk)

- A private rental licensing scheme applies to some properties in this area, please contact us before proceeding
- Appliances & services are untested, dimensions are approximate and floor plans are not to scale

- Legal advice should be taken to verify fixtures/fittings, planning, alterations and/or lease details