



Price
£575,000

Freehold

2x  3x  1x 

**Shottendane Road,
Margate, Kent, CT9**

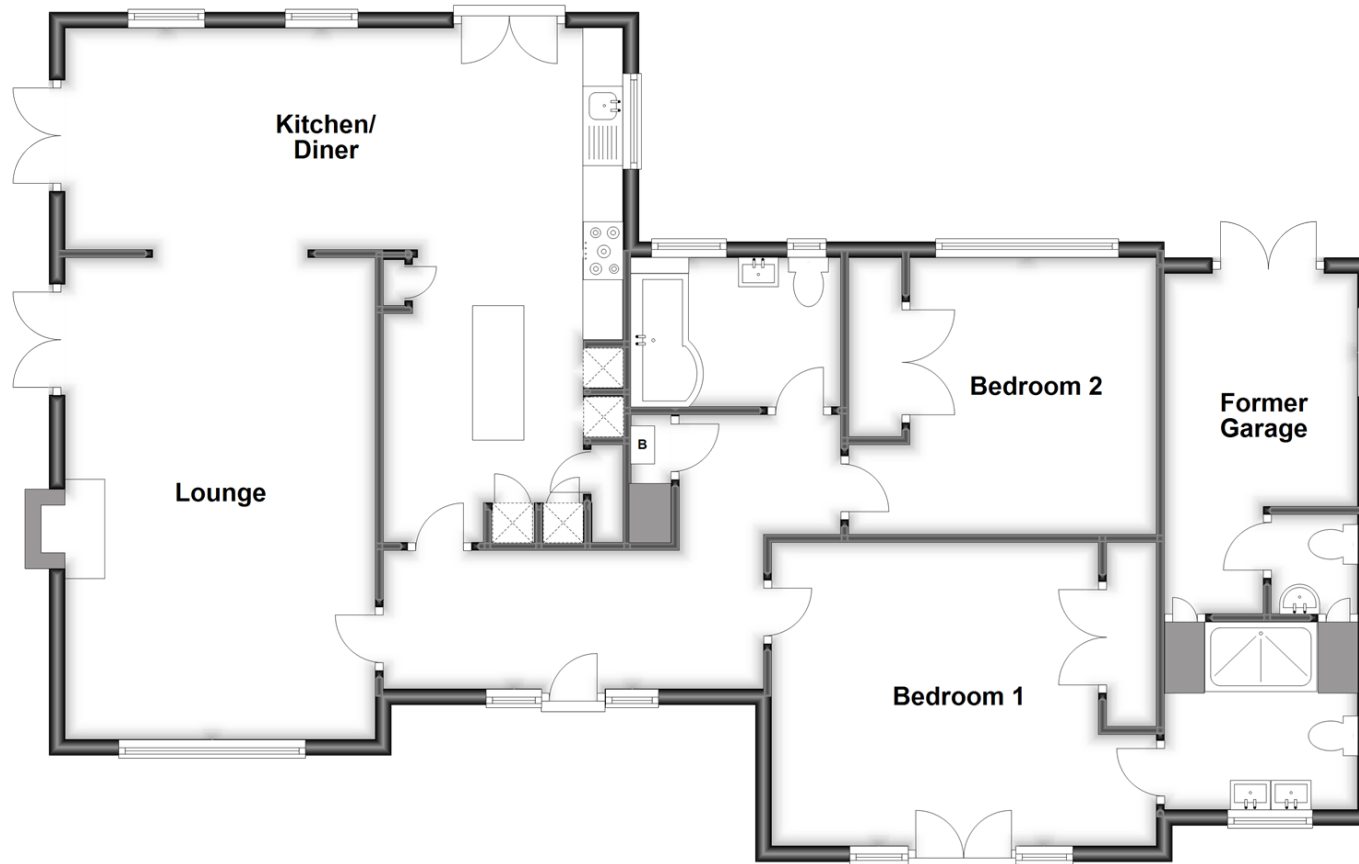
OVER 60?

You could get up to
59% off the price!*

Wards
Helping you move forwards

Ground Floor

Approx. 123.7 sq. metres (1331.4 sq. feet)



Accommodation

GROUND FLOOR

Hallway

Kitchen/Diner

Lounge: 19'11 x 12'9 (6.07m x 3.89m)

Bedroom 1: 15'10 x 12'6 (4.83m x 3.81m)

En-Suite Shower Room : 8'6 x 7'9
(2.59m x 2.36m)

Bathroom : 8'6 x 6'4 (2.59m x 1.93m)

Cloakroom

Bedroom 2: 12'6 x 11'11 (3.81m x 3.63m)

Office: 14'4 x 8'4 (4.37m x 2.54m)

OUTSIDE

Front Garden

Off Road Parking

Rear Garden



Main features

- Just move straight in, unpack and enjoy your new home
- Well presented throughout
- Amazing dream kitchen with new appliances
- Patio doors looking out to sunny rear garden
- En-suite shower room
- Suitable for an array of buyers
- Close to schools, bus routes and Westwood Cross Shopping Centre



Nearest Schools

Primary Schools: St Gregory's Catholic Primary, Margate 0.1 miles, Salmestone Primary 0.2 miles, Garlinge Primary and Nursery 0.6 miles

Secondary Schools: Hartsdown Technology College 0.4



Transport Information

Train Stations: Margate 0.6 miles, Westgate-on-Sea 1.7 miles, Broadstairs 2.6 miles



Address

Shottendane Road, Margate, Kent, CT9



Directions

For directions to this property please contact us.



Wards
Helping you move forwards

Call Cliftonville Branch 01843 227447 ■ wardsofkent.co.uk



- A private rental licensing scheme applies to some properties in this area, please contact us before proceeding
- Appliances & services are untested, dimensions are approximate and floor plans are not to scale

- Legal advice should be taken to verify fixtures/fittings, planning, alterations and/or lease details
- Our Homewise partnership offer a 'Home for Life' plan to buyers over 60, granting a lifetime lease for your protection and reducing the purchase price by up to 59%



15101912/20220615/DM/NF