



Guide Price
£200,000

Leasehold

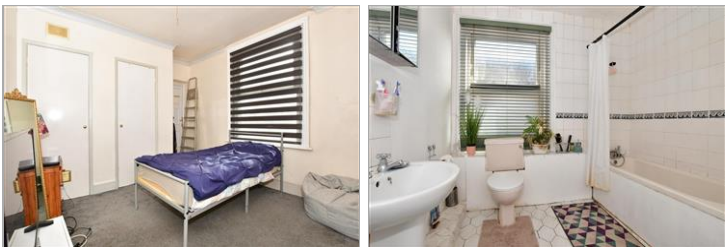
3x  1x  1x 

**Eastern Esplanade,
Cliftonville, Margate,
Kent, CT9**

OVER 60?

Secure this property
for up to **59% less!**

Wards
Helping you move forwards



Main features

- Stunning sea views from the front
- TLC required to make this a perfect holiday home by the sea
- Access to a communal garden
- Spacious rooms throughout, perfect for visiting family and friends
- Walking distance to Margate sandy beaches

Accommodation

SPLIT LEVEL SECOND FLOOR

Hallway

Lounge/Diner: 18'3 x 11'4 (5.57m x 3.46m)

Bedroom 1: 10'6 x 10'5 (3.20m x 3.18m)

Bedroom 2: 14'2 x 8'2 (4.32m x 2.49m)

Bedroom 3: 9'8 x 6'2 (2.95m x 1.88m)

Kitchen: 12'4 x 5'5 (3.76m x 1.65m)

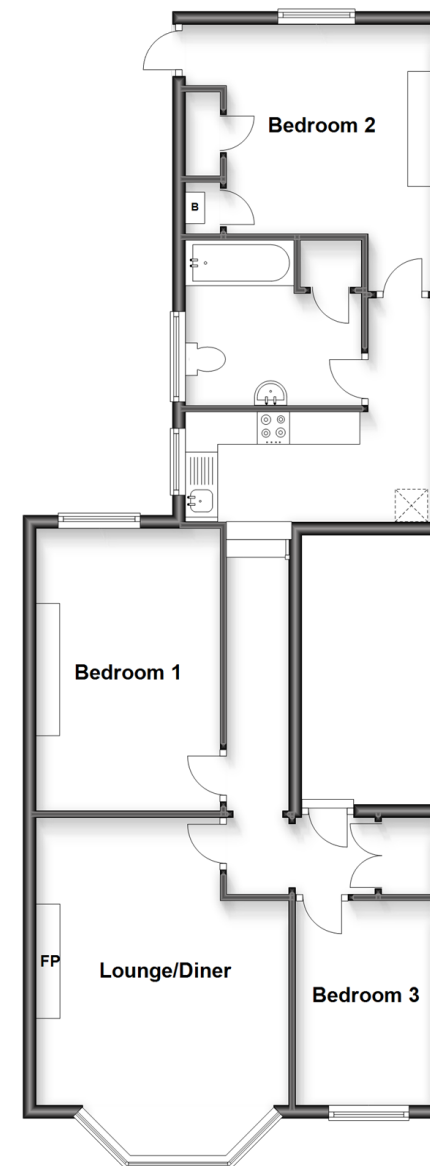
Bathroom

OUTSIDE

Communal Garden

Split Level Second Floor

Approx. 74.4 sq. metres (800.8 sq. feet)



Call Cliftonville - 01843 227447 ■ wardsofkent.co.uk

- A private rental licensing scheme applies to some properties in this area, please contact us before proceeding
- Legal advice should be taken to verify fixtures/fittings, planning, alterations and/or lease details
- Appliances & services are untested, dimensions are approximate and floor plans are not to scale
- Through a Homewise Home For Life Plan people aged 60+ can secure this property for up to 59% less, by purchasing a Lifetime Lease.



15102394/20231214/KP/KP