



OVER 60?

Secure this property
for up to **59% less!**

Price

£490,000

Freehold

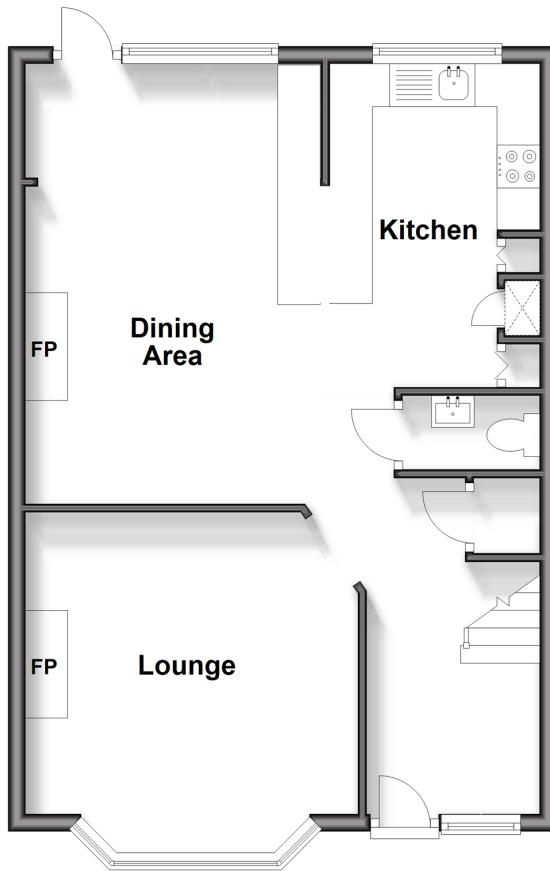
4x  1x  1x 

**Wellesley Road,
Margate, Kent, CT9**

Wards
Helping you move forwards

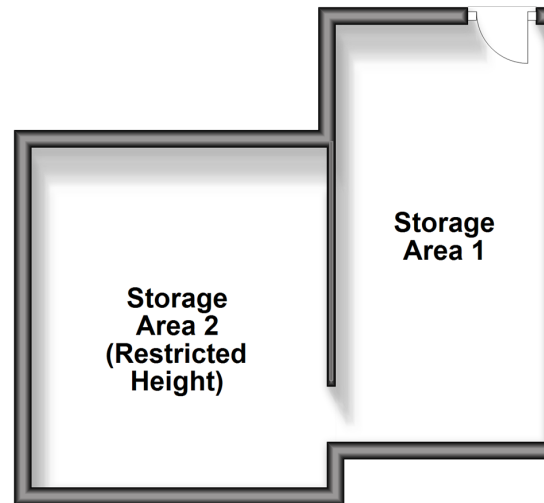
Ground Floor

Approx. 52.9 sq. metres (569.6 sq. feet)



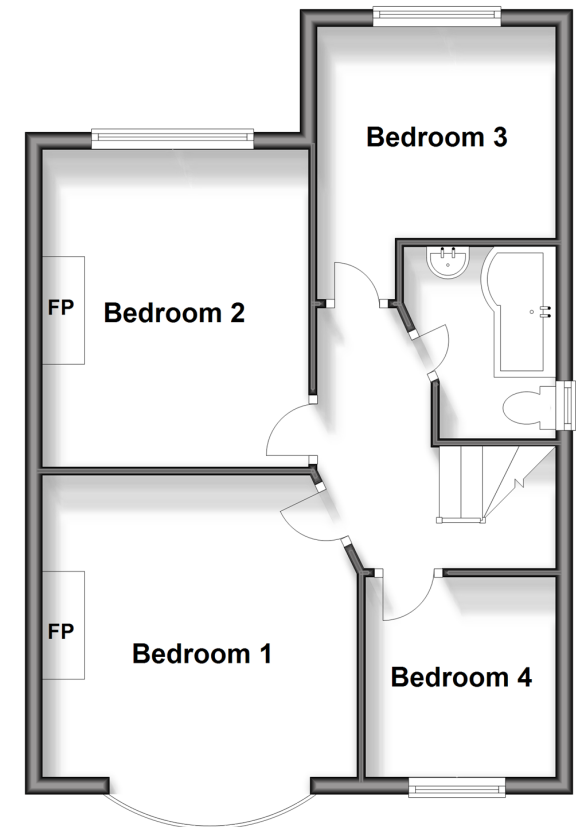
Lower Ground Floor

Approx. 26.0 sq. metres (279.6 sq. feet)



First Floor

Approx. 48.2 sq. metres (519.3 sq. feet)



Accommodation

GROUND FLOOR

Hallway
Lounge: 14'0 x 12'7 (4.27m x 3.84m)
Kitchen: 12'9 x 8'2 (3.89m x 2.49m)
Dining Area: 17'0 x 10'4 (5.19m x 3.15m)
Cloakroom

LOWER GROUND FLOOR

Storage Area 1
Storage Area 2

FIRST FLOOR

Landing
Bedroom 1: 13'8 x 11'8 (4.17m x 3.56m)
Bedroom 2: 12'1 x 10'2 (3.69m x 3.10m)
Bedroom 3: 8'5 x 8'2 (2.57m x 2.49m)
Bedroom 4: 8'0 x 7'1 (2.44m x 2.16m)
Bathroom

OUTSIDE

Front Garden
Off Road Parking
Rear Garden
Outbuilding



Main features

- Stunning and refurbished to a high standard
- Plenty of space for all of the family
- Desirable location handy for schools, shopping, dining and the beach
- The studio at the bottom of the garden offers you that work from home option
- Kitchen diner that opens out to the decking makes for fantastic entertaining



Nearest Schools

Primary Schools: Cliftonville 0.6 miles, Northdown 0.6 miles, Drapers Mills 0.7 miles. Secondary Schools: Laleham Gap 0.4 miles, St Anthony's 0.7 miles. Further Education: Hartsdown Technology College 1.5 miles, Dane Court 2.5 miles, St George's 2.9 miles



Transport Information

Train Stations: Margate 1.5 miles, Ramsgate 2.9 miles, Westgate-on-Sea 3.2 miles, Broadstairs 3.2 miles



Address

Wellesley Road, Margate, Kent, CT9



Directions

For directions to this property please contact us.



Wards
Helping you move forwards

Call Cliftonville Branch 01843 227447 ■ wardsofkent.co.uk



- A private rental licensing scheme applies to some properties in this area, please contact us before proceeding
- Appliances & services are untested, dimensions are approximate and floor plans are not to scale

- Legal advice should be taken to verify fixtures/fittings, planning, alterations and/or lease details
- Through a Homewise Home For Life Plan people aged 60+ can secure this property for up to 59% less, by purchasing a Lifetime Lease.



15105111/20240216/DM/VH