



Guide Price
£210,000

Freehold

2x  1x  1x 

**Cedar Close, Cliftonville,
Margate, Kent, CT9**

OVER 60?

Secure this property
for up to **59% less!**

Wards
Helping you move forwards



Main features

- Excellent first time purchase
- Quiet cul-de-sac location
- Secluded rear garden and allocated parking
- Close to local amenities including shops and schooling
- As a relatively modern home your energy bills won't be breaking the bank

Accommodation

GROUND FLOOR

Entrance Porch

Hallway

Lounge: 14'1 x 10'0 (4.30m x 3.05m)

Kitchen/Diner: 14'0 x 9'1 (4.27m x 2.77m)

FIRST FLOOR

Landing

Bedroom 1: 13'0 x 10'0 (3.97m x 3.05m)

Bedroom 2: 10'1 x 7'0 (3.08m x 2.14m)

Bathroom

OUTSIDE

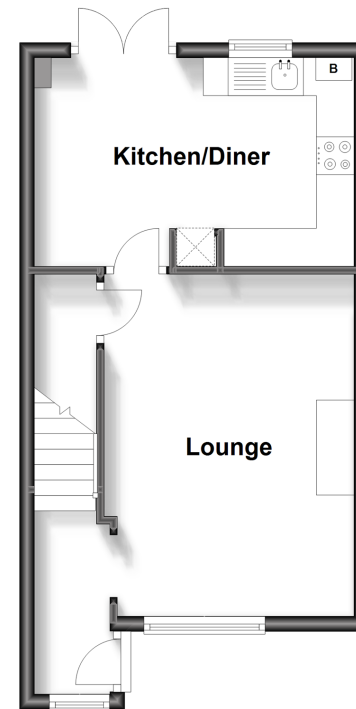
Front Garden

Off Street Parking

Rear Garden

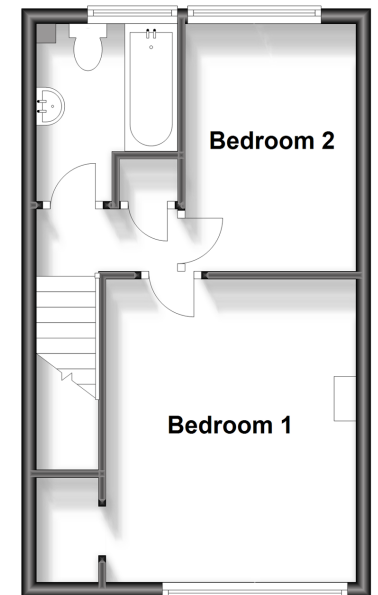
Ground Floor

Approx. 32.2 sq. metres (347.1 sq. feet)



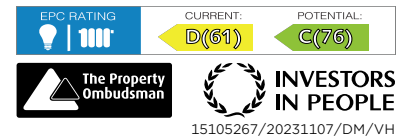
First Floor

Approx. 31.2 sq. metres (336.1 sq. feet)



Call Cliftonville - 01843 227447 ■ wardsofkent.co.uk

- A private rental licensing scheme applies to some properties in this area, please contact us before proceeding
- Legal advice should be taken to verify fixtures/fittings, planning, alterations and/or lease details
- Appliances & services are untested, dimensions are approximate and floor plans are not to scale
- Through a Homewise Home For Life Plan people aged 60+ can secure this property for up to 59% less, by purchasing a Lifetime Lease.



15105267/20231107/DM/VH