



**Price**  
**£130,000**

**Leasehold**

1x  1x  1x 

**Fulsam Place, Margate,  
Kent, CT9 2QG**

*Wards*  
Helping you move forwards





## Main features

- **Ground Floor Flat**
- **Own entrance**
- **Off Road Parking**
- **Private garden to sit and relax**
- **No onward chain**
- **Close to train station, sandy beaches and restaurants**

## Accommodation

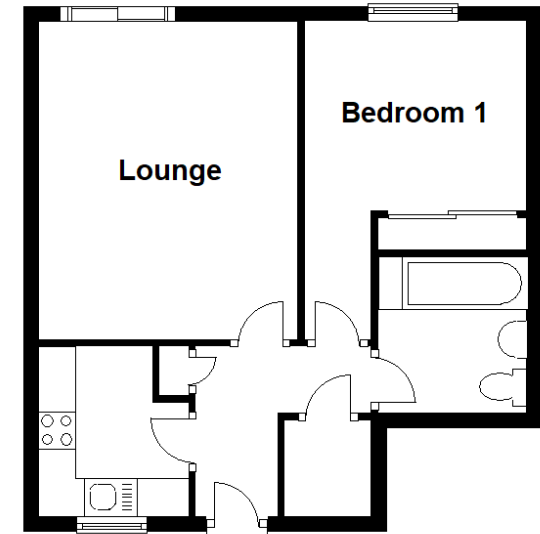
### GROUND FLOOR

Entrance	
Lounge	: 13'11 x 11'5 (4.24m x 3.48m)
Kitchen	: 7'4 x 6'10 (2.24m x 2.08m)
Bedroom 1	: 9'10 x 8'3 (3.00m x 2.52m)
Bathroom	

### OUTSIDE

Rear garden

### Ground Floor Approx. 408.1 sq. feet



**Call Cliftonville - 01843 227447 ■ [wardsofkent.co.uk](http://wardsofkent.co.uk)**

- A private rental licensing scheme applies to some properties in this area, please contact us before proceeding
- Appliances & services are untested, dimensions are approximate and floor plans are not to scale

- Legal advice should be taken to verify fixtures/fitings, planning, alterations and/or lease details