



Price
£425,000

Freehold

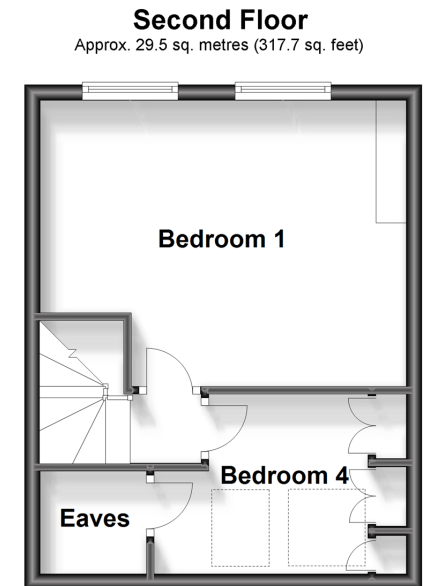
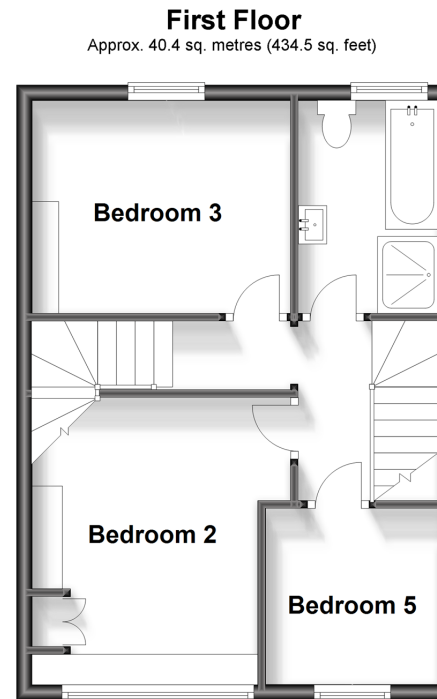
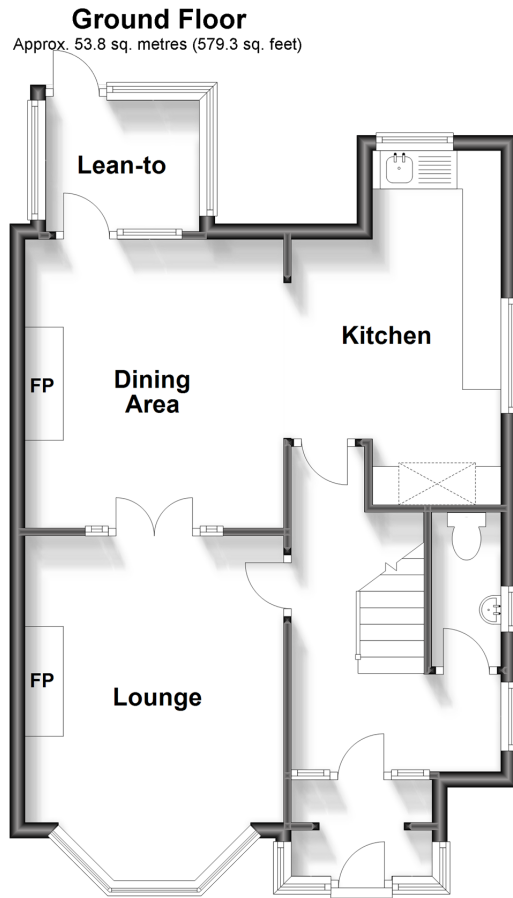
5x  1x  1x 

**Northdown Road,
Margate, Kent, CT9**

OVER 60?

Secure this property
for up to **59% less!**

Wards
Helping you move forwards



Accommodation

GROUND FLOOR

Entrance Hall
Cloakroom
Lounge: 14'11 x 11'0 (4.55m x 3.36m)
Dining Area : 12'4 x 11'0 (3.76m x 3.36m)
Kitchen: 14'11 x 9'5 (4.55m x 2.87m)
Lean-to: 7'8 x 6'2 (2.34m x 1.88m)

FIRST FLOOR

Landing
Bedroom 2: 12'5 x 11'2 (3.79m x 3.41m)
Bedroom 3: 11'2 x 9'1 (3.41m x 2.77m)
Bathroom
Bedroom 5: 7'7 x 7'5 (2.31m x 2.26m)

SECOND FLOOR

Landing
Bedroom 1: 15'7 x 12'5 (4.75m x 3.79m)
Bedroom 4: 10'3 x 7'7 (3.13m x 2.31m)

OUTSIDE

Front Garden
Rear Garden



Main features

- Well presented family home with sea views from the master bedroom
- Dining room ideal for entertaining friends and family
- Conservatory and downstairs cloakroom
- Walking distance to Margate sandy beaches, shops and restaurants
- Close to local bus routes handy to get to neighbouring towns



Nearest Schools

Primary Schools: Cliftonville Primary 0.1 miles, Northdown Primary 0.3 miles, Palm Bay Primary 0.4 miles.
Secondary Schools: Laleham Gap School 0.2 miles, St Anthony's School 0.3 miles.
Further Education: St George's C of E Foundation School



Transport Information

Train Stations: Margate 2.3 miles, Broadstairs 2.6 miles, Dumpton Park 2.8 miles



Address

Northdown Road, Margate, Kent, CT9



Directions

For directions to this property please contact us.



Call Cliftonville Branch 01843 227447 ■ wardsofkent.co.uk



- A private rental licensing scheme applies to some properties in this area, please contact us before proceeding
- Appliances & services are untested, dimensions are approximate and floor plans are not to scale

- Legal advice should be taken to verify fixtures/fittings, planning, alterations and/or lease details
- Through a Homewise Home For Life Plan people aged 60+ can secure this property for up to 59% less, by purchasing a Lifetime Lease.



15107543/20231219/NF/NF