



Guide Price
£550,000

Freehold

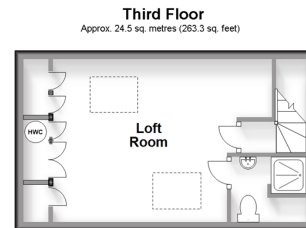
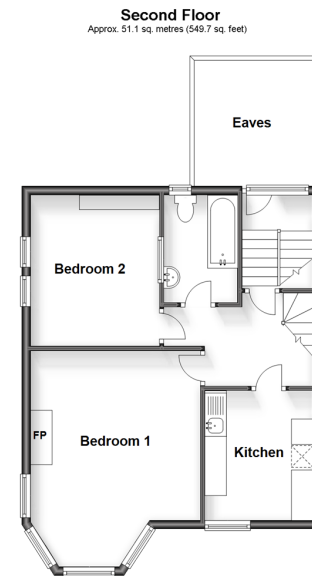
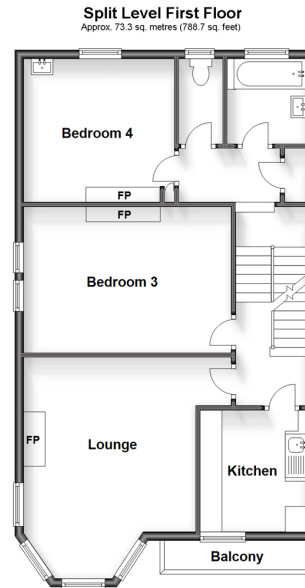
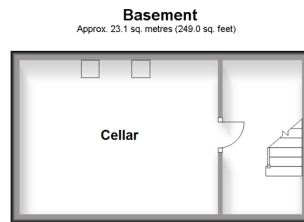
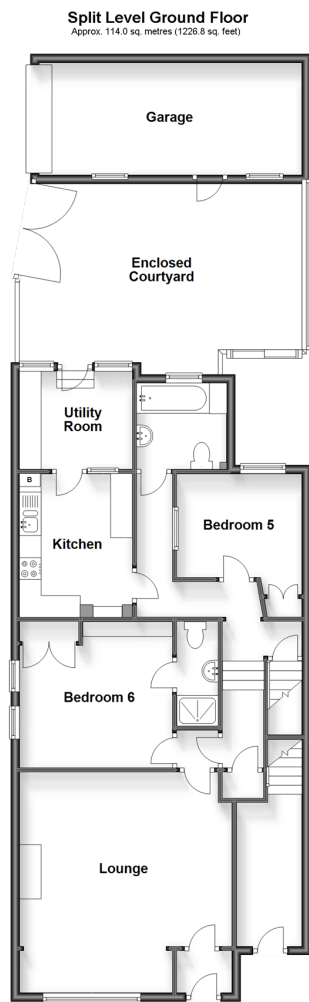
6x  5x  3x 

**Canterbury Road,
Westbrook, Margate,
Kent, CT9**

OVER 60?

Secure this property
for up to **59% less!**

Wards
Helping you move forwards



Accommodation

SPLIT LEVEL GROUND FLOOR

Hallway
Lounge: 16'8 x 16'3 (5.08m x 4.96m)
Bedroom 6: 11'9 x 11'4 (3.58m x 3.46m)
En-suite Shower Room
Bedroom 5: 9'4 x 9'0 (2.85m x 2.75m)
Bathroom 1
Ground Floor Kitchen: 11'2 x 8'4 (3.41m x 2.54m)
Ground Floor Utility Room: 8'3 x 7'7 (2.52m x 2.31m)

BASEMENT

Cellar: 12'0 x 5'9 (3.66m x 1.75m)

SPLIT LEVEL FIRST FLOOR

Landing
Bathroom 2
Separate Toilet
Bedroom 4: 11'9 x 11'0 (3.58m x 3.36m)
Bedroom 3: 15'2 x 12'1 (4.63m x 3.69m)
Lounge 1: 17'2 x 13'0 (5.24m x 3.97m)
First Floor utility Room : 9'3 x 8'0 (2.82m x 2.44m)
Balcony: 13'4 x 10'4 (4.07m x 3.15m)

SECOND FLOOR

Landing
Bedroom 1: 17'0 x 12'9 (5.19m x 3.89m)
Bedroom 2: 9'8 x 8'10 (2.95m x 2.69m)
Second Floor Kitchen: 9'8 x 8'10 (2.95m x 2.69m)
Bathroom 3

THIRD FLOOR

Loft Room : 13'2 x 12'8 (4.02m x 3.86m)
En-suite Shower Room

OUTSIDE

Garage
Enclosed Courtyard Garden



Main features

- Period home oozing with period features
- views to Westbrook Bay
- Car Port and valuable off road parking
- Versatile accommodation, you could live in one part and enjoy rental income from another part of the property
- Just a short walk to Margate Train Station, Dreamland and the beach



Nearest Schools

Primary Schools: Garlinge Primary and Nursery 0.7 miles, St Gregory's Catholic Primary, Margate 1.0 miles, Margate, Holy Trinity and St John's C of E Primary 1.1 miles



Transport Information

Train Stations: Margate 0.3 miles, Westgate-on-Sea 1.5 miles, Birchington-On-Sea 3.2 miles



Address

Canterbury Road, Westbrook, Margate, Kent, CT9



Directions

For directions to this property please contact us.



Wards
Helping you move forwards

Call Cliftonville Branch 01843 227447 ■ wardsofkent.co.uk



- A private rental licensing scheme applies to some properties in this area, please contact us before proceeding
- Appliances & services are untested, dimensions are approximate and floor plans are not to scale

- Legal advice should be taken to verify fixtures/fittings, planning, alterations and/or lease details
- Through a Homewise Home For Life Plan people aged 60+ can secure this property for up to 59% less, by purchasing a Lifetime Lease.



15110015/20231125/DM/VH