



Price
£475,000

Freehold

3x  1x  1x 

**Stephens Close,
Margate, Kent, CT9**

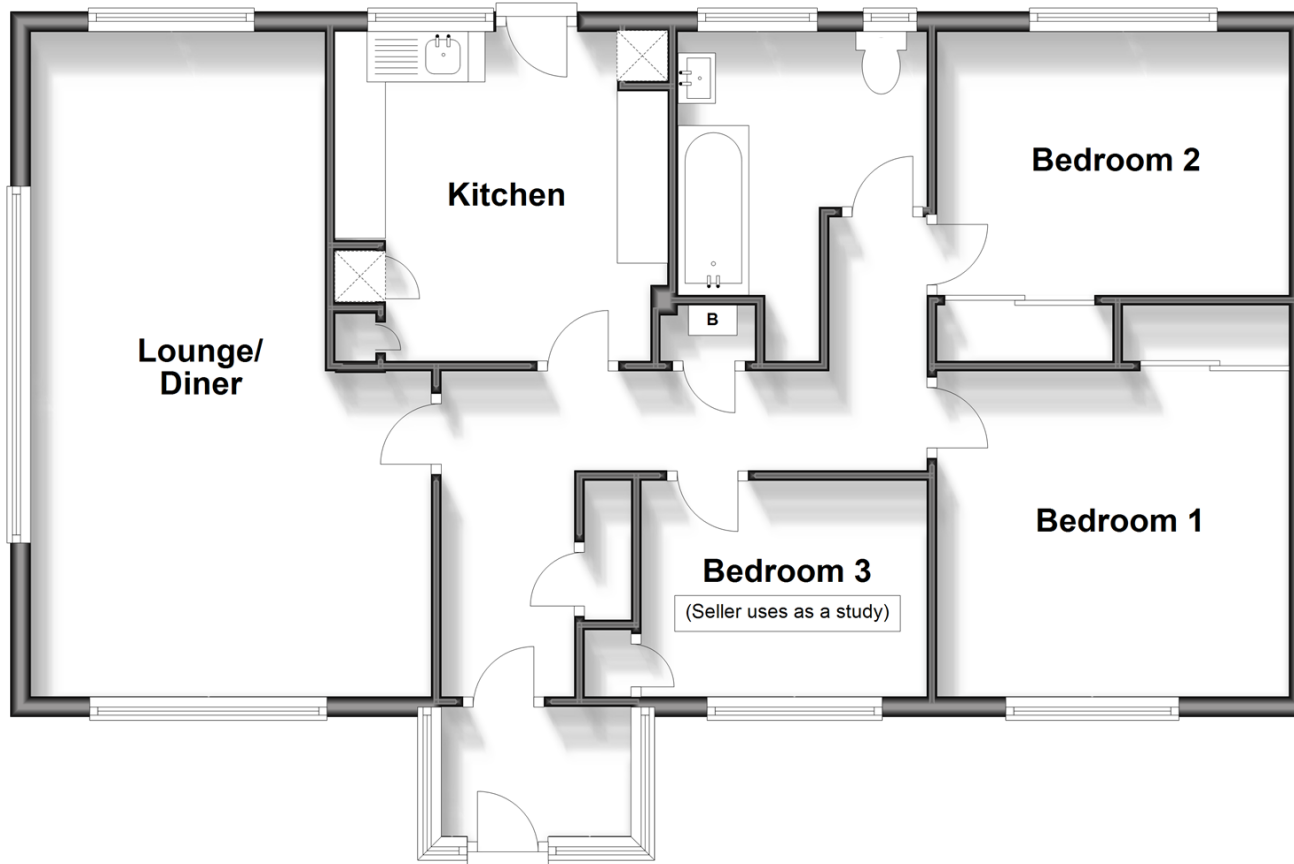
OVER 60?

Secure this property
for up to **59% less!**

Wards
Helping you move forwards

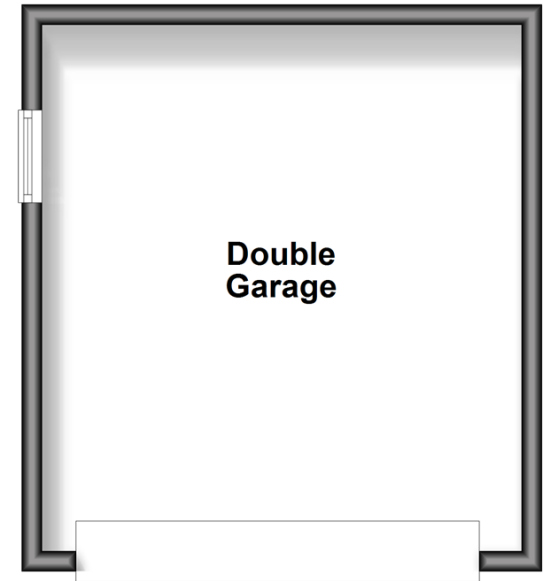
Ground Floor

Approx. 84.6 sq. metres (911.1 sq. feet)



Outbuilding

Approx. 24.8 sq. metres (266.8 sq. feet)



Accommodation

GROUND FLOOR

Entrance Porch

Hallway

Lounge/Diner: 21'7 x 12'9 (6.58m x 3.89m)

Kitchen: 10'8 x 10'8 (3.25m x 3.25m)

Bedroom 1: 11'5 x 10'4 (3.48m x 3.15m)

Bedroom 2: 11'7 x 9'0 (3.53m x 2.75m)

Bedroom 3 (used as a study): 9'3 x 6'9 (2.82m x 2.06m)

Bathroom

OUTBUILDING

Double Garage: 17'2 x 14'9 (5.24m x 4.50m)

OUTSIDE

Front Garden

Off Road Parking

Rear Garden



Main features

- Stunning bungalow in fantastic condition
- Immaculate throughout with lovely views
- Double garage, perfect for car enthusiasts
- Plenty of space for entertaining friends and family
- Bedroom 3 is currently being used as a study ideal if working from home
- Rural views but is also within easy reach of sandy beaches



Nearest Schools

Primary Schools: Garlinge Primary and Nursery 0.4 miles, St Saviour's C of E Junior School 0.9 miles, St Gregory's Catholic Primary, Margate 1.0 miles

Secondary Schools: Hartsdown Technology College 0.7



Transport Information

Train Stations: Westgate-on-Sea 0.8 miles, Margate 1.0 miles, Birchington-On-Sea 2.2 miles



Address

Stephens Close, Margate, Kent, CT9



Directions

For directions to this property please contact us.



Call Cliftonville Branch 01843 227447 ■ wardsofkent.co.uk



- A private rental licensing scheme applies to some properties in this area, please contact us before proceeding
- Appliances & services are untested, dimensions are approximate and floor plans are not to scale

- Legal advice should be taken to verify fixtures/fittings, planning, alterations and/or lease details
- Through a Homewise Home For Life Plan people aged 60+ can secure this property for up to 59% less, by purchasing a Lifetime Lease.



15110130/20240501/DM/VH