

OVER 60?

Secure this property
for up to **59% less!**

Guide Price
£185,000

Leasehold

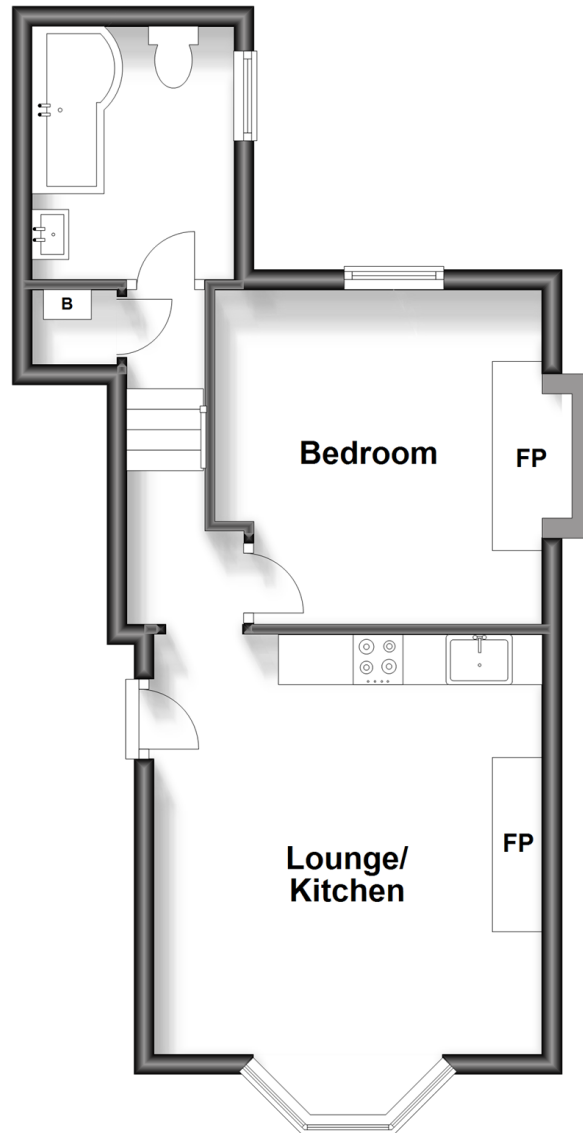
1x  1x  1x 

**Trinity Square, Margate,
Kent, CT9**

Wards
Helping you move forwards

Split Level Ground Floor

Approx. 37.1 sq. metres (399.6 sq. feet)



Accommodation

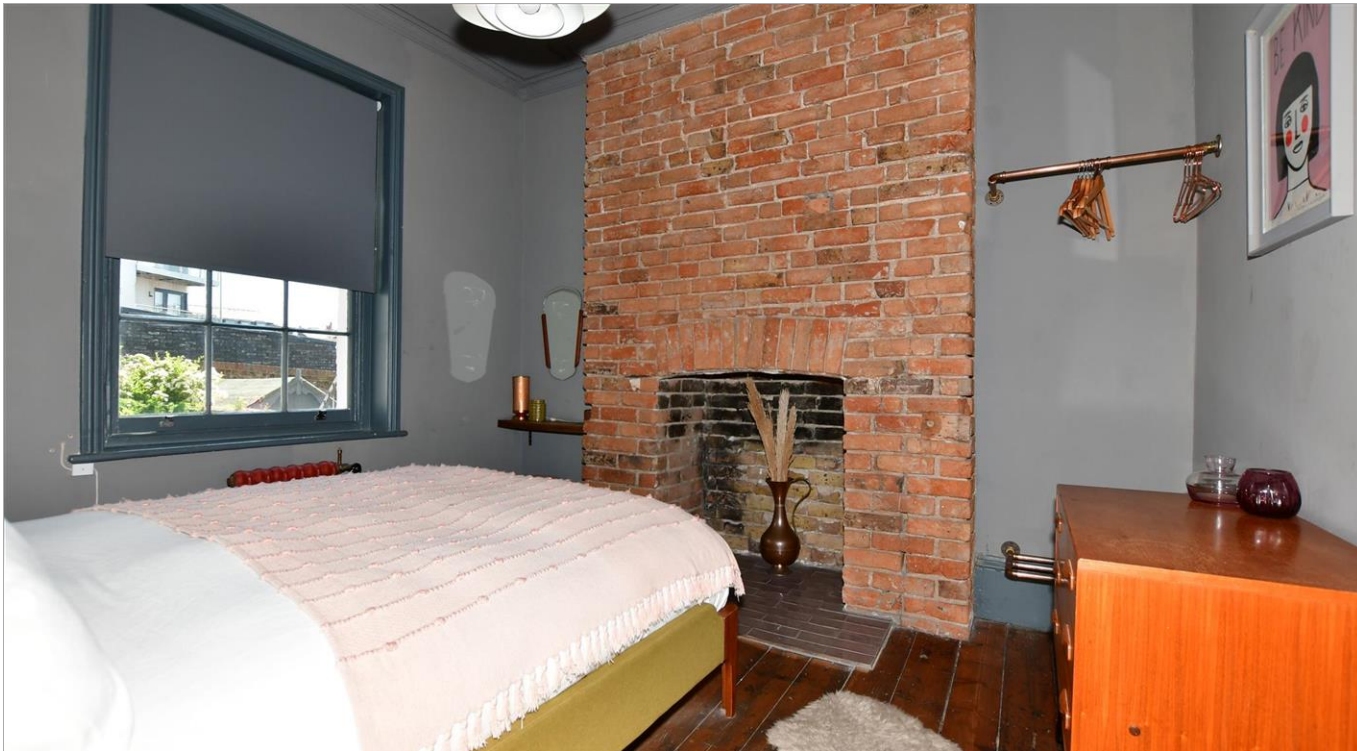
SPLIT LEVEL GROUND FLOOR

Hallway

Lounge/Kitchen: 14'2 x 13'2 (4.32m x 4.02m)

Bedroom: 11'1 x 10'8 (3.38m x 3.25m)

Bathroom



Main features

- Immaculate throughout this apartment is absolutely stunning
- No onward chain complications
- Highly sought after location close to Margate Old Town and sandy beaches
- This would be a fantastic holiday home that could pay it's way with holiday rental
- Currently producing a 90 day income of £9,000 with excellent guest reviews



Nearest Schools

Primary Schools: Margate, Holy Trinity and St John's C of E Primary 0.6 miles, Salmestone Primary 1.1 miles, Cliftonville Primary 1.1 miles

Secondary Schools: Laleham Gap School 1.2 miles, St



Transport Information

Train Stations: Margate 0.9 miles, Westgate-on-Sea 2.7 miles, Broadstairs 3.6 miles



Address

Trinity Square, Margate, Kent, CT9



Directions

For directions to this property please contact us.



Wards
Helping you move forwards

Call Cliftonville Branch 01843 227447 ■ wardsofkent.co.uk



- A private rental licensing scheme applies to some properties in this area, please contact us before proceeding
- Appliances & services are untested, dimensions are approximate and floor plans are not to scale

- Legal advice should be taken to verify fixtures/fittings, planning, alterations and/or lease details
- Through a Homewise Home For Life Plan people aged 60+ can secure this property for up to 59% less, by purchasing a Lifetime Lease.



15110302/20231117/DM/VH