



OVER 60?

You could get up to
59% off the price!*

Price

£550,000

Freehold

4x  2x  1x 

**Northdown Park Road,
Margate, Kent, CT9**

Wards
Helping you move forwards

Accommodation

GROUND FLOOR

Entrance Porch

Hallway

Lounge: 16'2 x 14'1 (4.93m x 4.30m)

Family room: 12'7 x 12'3 (3.84m x 3.74m)

Kitchen/Diner: 24'6 x 12'6 (7.47m x 3.81m)

Cloakroom

Conservatory Area: 13'1 x 12'6 (3.99m x 3.81m)

BASEMENT

Cellar

SPLIT LEVEL FIRST FLOOR

Landing

Bedroom 1: 16'6 x 12'6 (5.03m x 3.81m)

En-suite Shower Room

Bedroom 2: 12'7 x 12'2 (3.84m x 3.71m)

Bedroom 3: 12'6 x 12'6 (3.81m x 3.81m)

Bedroom 4: 6'0 x 5'0 (1.83m x 1.53m)

Bathroom

Separate Toilet

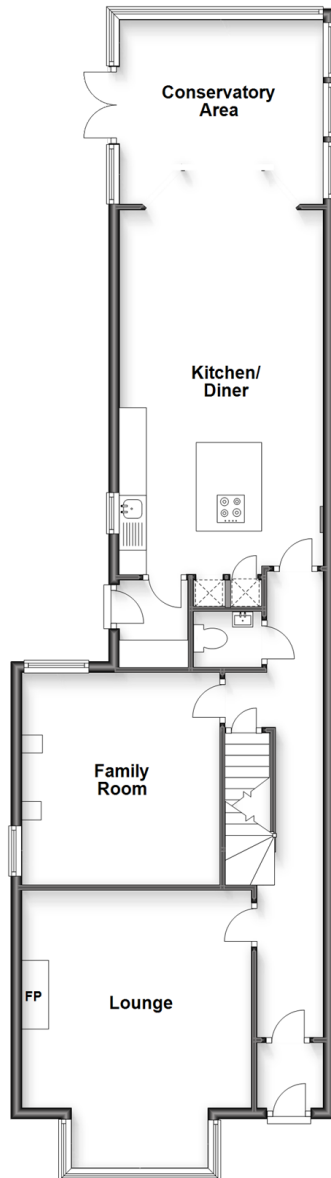
OUTSIDE

Front Garden

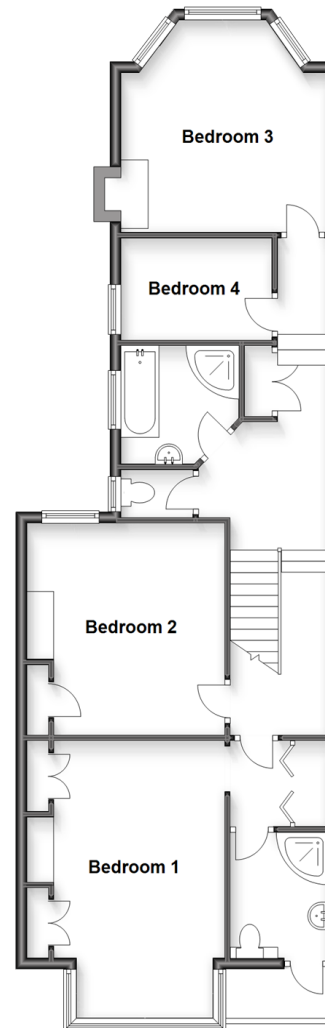
Rear Garden

Balcony from Bedroom 1

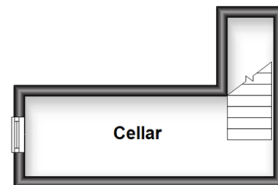
Ground Floor
Approx. 91.5 sq. metres (985.1 sq. feet)



Split Level First Floor
Approx. 80.4 sq. metres (865.4 sq. feet)



Basement
Approx. 8.0 sq. metres (85.7 sq. feet)





Main features

- Stunning family home with features
- immaculate throughout
- Off Road Parking and secluded garden
- En-suite shower Room with a dressing area and a balcony adds to the overall sense of opulence
- Great location for schools, sandy beaches and local amenities
- Secluded rear garden
- This is a very special home



Nearest Schools

Primary Schools: Cliftonville Primary 0.2 miles, Northdown Primary 0.2 miles, Drapers Mills Primary 0.5 miles

Secondary Schools: Laleham Gap School 0.0 miles, St Anthony's School 0.1 miles



Transport Information

Train Stations: Margate 1.4 miles, Broadstairs 2.0 miles, Dumpton Park 2.7 miles



Address

Northdown Park Road, Margate, Kent, CT9



Directions

For directions to this property please contact us.



Wards
Helping you move forwards

Call Cliftonville Branch 01843 227447 ■ wardsofkent.co.uk



- A private rental licensing scheme applies to some properties in this area, please contact us before proceeding
- Appliances & services are untested, dimensions are approximate and floor plans are not to scale

- Legal advice should be taken to verify fixtures/fittings, planning, alterations and/or lease details
- Our Homewise partnership offer a 'Home for Life' plan to buyers over 60, granting a lifetime lease for your protection and reducing the purchase price by up to 59%



15110356/20221022/DM/VH