

OVER 60?

Secure this property
for up to **59% less!**



Price
£400,000
Freehold

2x  1x  1x 

Teynham Close, Cliftonville, Margate, Kent,
CT9

Wards
Helping you move forwards



Main features

- Palm Bay location in quiet cul-de-sac
- Detached & Chain free
- Large lounge/diner ideal for entertaining friends & family
- Sunny secluded garden
- Short stroll to local shops & Botany Bay
- Automated garage with off road parking

Accommodation

GROUND FLOOR

Hallway

Cloakroom

Lounge/Diner: (L-shaped) 20'0 x 8'1
(6.10m x 2.47m) plus 19'5 x 10'9
(5.92m x 3.28m)

Conservatory: 7'4 x 4'4 (2.24m x 1.32m)

Kitchen: 11'2 x 8'11 (3.41m x 2.72m)

Bedroom 1: 12'11 x 11'2 (3.94m x 3.41m)

Bedroom 2: 13'1 x 8'1 (3.99m x 2.47m)

Bathroom

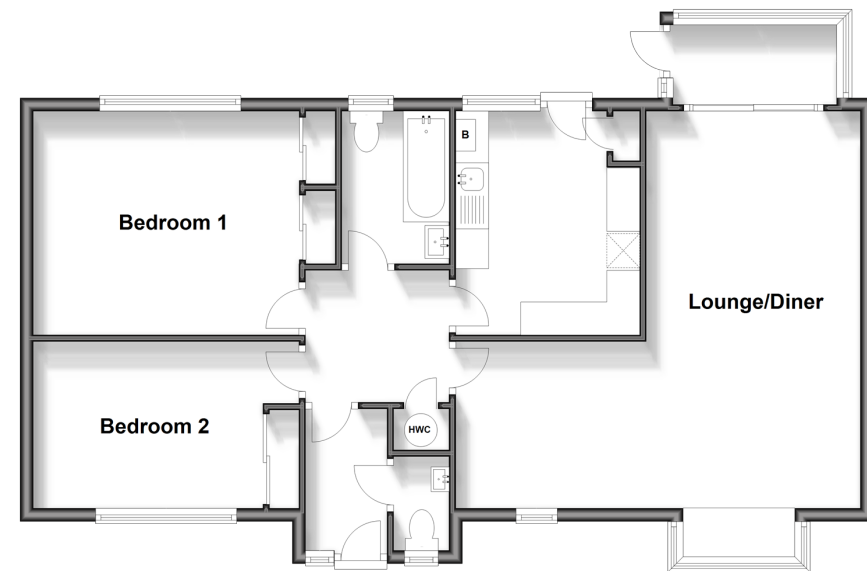
OUTSIDE

Front Garden

Garage

Rear Garden

Ground Floor
Approx. 81.6 sq. metres (877.9 sq. feet)



Call Cliftonville - 01843 227447 ■ wardsofkent.co.uk

- A private rental licensing scheme applies to some properties in this area, please contact us before proceeding
- Legal advice should be taken to verify fixtures/fittings, planning, alterations and/or lease details
- Appliances & services are untested, dimensions are approximate and floor plans are not to scale
- Through a Homewise Home For Life Plan people aged 60+ can secure this property for up to 59% less, by purchasing a Lifetime Lease.

