



OVER 60?

Secure this property
for up to **59% less!**

Price
£575,000

Freehold

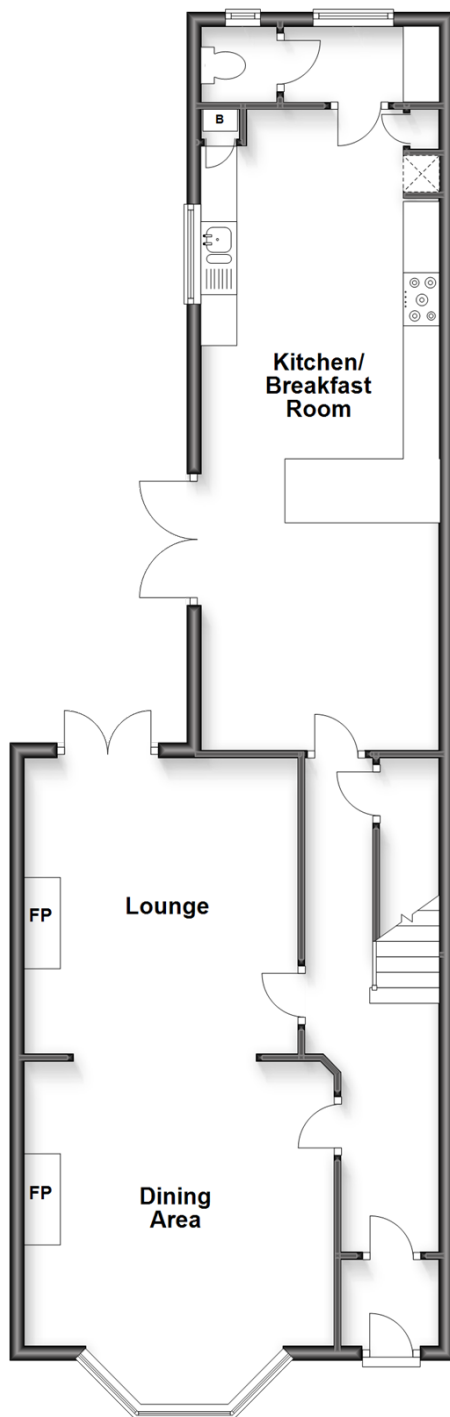
4x  2x  1x 

**Madeira Road, Margate,
Kent, CT9**

Wards
Helping you move forwards

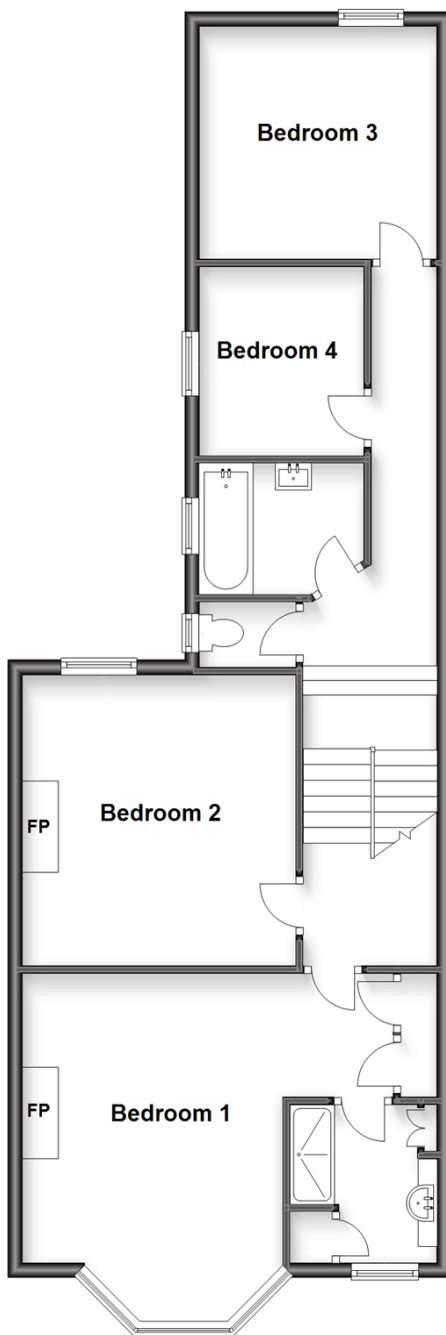
Ground Floor

Approx. 80.0 sq. metres (861.6 sq. feet)



Split Level First Floor

Approx. 76.3 sq. metres (821.1 sq. feet)



Accommodation

GROUND FLOOR

Entrance Porch

Hallway

Dining Area: 16'0 x 12'9 (4.88m x 3.89m)

Lounge: 15'0 x 11'0 (4.58m x 3.36m)

Kitchen/Breakfast Room : 28'6 x 10'10
(8.69m x 3.30m)

Separate Toilet

SPLIT LEVEL FIRST FLOOR

Landing

Bathroom : 7'6 x 5'11 (2.29m x 1.80m)

Bedroom 1: 15'7 x 10'10 (4.75m x 3.30m)

En-suite Shower Room : 6'11 x 6'6 (2.11m x 1.98m)

Bedroom 2: 13'1 x 12'4 (3.99m x 3.76m)

Bedroom 3: 10'8 x 10'0 (3.25m x 3.05m)

Bedroom 4: 8'3 x 7'7 (2.52m x 2.31m)

OUTSIDE

Front Garden

Rear Garden



Main features

- Stunning Victorian home in hugely desirable area
- Masses of original features throughout
- Walking distance to shops, restaurants and catchment area for good schools
- Beautifully decorated with period colour palate
- The garden is a real joy with both adult and children areas



Nearest Schools

Primary Schools: Cliftonville Primary 0.7 miles, Salmestone Primary 1.0 miles, Margate, Holy Trinity and St John's C of E Primary 1.0 miles

Secondary Schools: Laleham Gap School 0.8 miles, St



Transport Information

Train Stations: Margate 1.3 miles, Westgate-on-Sea 2.9 miles, Broadstairs 3.5 miles



Address

Madeira Road, Margate, Kent, CT9



Directions

For directions to this property please contact us.



Wards
Helping you move forwards

Call Cliftonville Branch 01843 227447 ■ wardsofkent.co.uk



- A private rental licensing scheme applies to some properties in this area, please contact us before proceeding
- Appliances & services are untested, dimensions are approximate and floor plans are not to scale

- Legal advice should be taken to verify fixtures/fittings, planning, alterations and/or lease details
- Through a Homewise Home For Life Plan people aged 60+ can secure this property for up to 59% less, by purchasing a Lifetime Lease.



15110415/20230912/NF/NF