



Guide Price
£190,000

Leasehold

1x  1x  1x 

**Beaucroft Mansions,
Canterbury Road,
Westbrook, Margate,
Kent, CT9**

OVER 60?

Secure this property
for up to **59% less!**

Wards
Helping you move forwards



Main features

- **Fantastic first time purchase**
- **Would make a great second home**
- **Lovely garden, perfect for relaxing in the warmer months**
- **Short walk takes you to sandy beaches and Margate train station**
- **Newly extended lease, a little tender loving care will make this period home stunning**

Accommodation

LOWER GROUND FLOOR

Porch

Lounge/Diner: 18'4 x 13'7 (5.59m x 4.14m)

Inner Hallway

Bedroom : 13'7 x 13'7 (4.14m x 4.14m)

Bathroom

Kitchen: 11'3 x 9'5 (3.43m x 2.87m)

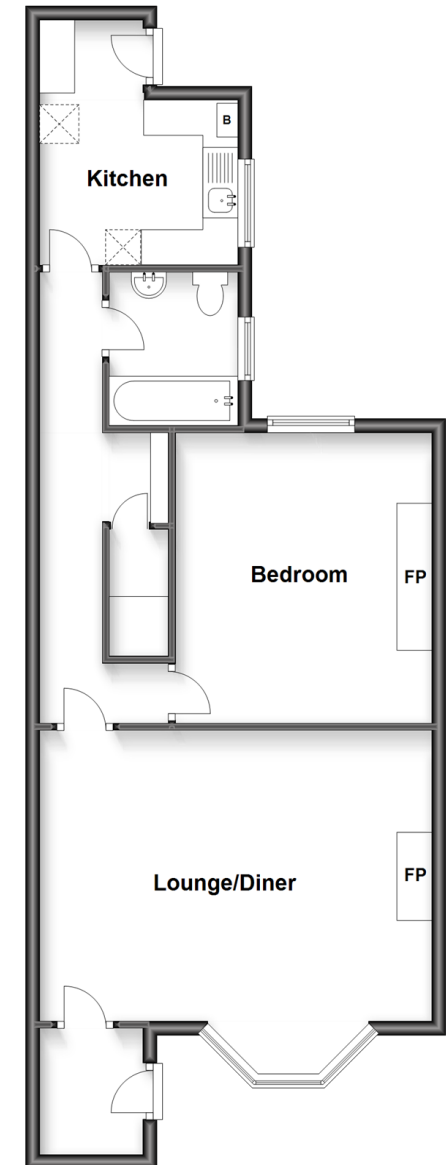
OUTSIDE

Rear Garden

Communal Garden

Lower Ground Floor

Approx. 65.0 sq. metres (699.3 sq. feet)



Call Cliftonville - 01843 227447 ■ wardsofkent.co.uk

- A private rental licensing scheme applies to some properties in this area, please contact us before proceeding
- Legal advice should be taken to verify fixtures/fittings, planning, alterations and/or lease details
- Appliances & services are untested, dimensions are approximate and floor plans are not to scale
- Through a Homewise Home For Life Plan people aged 60+ can secure this property for up to 59% less, by purchasing a Lifetime Lease.



15110464/20230215/IW/VH